



Student Bulletin



Calendar Events

Monday	Tuesday	Wednesday	Thursday	Friday
<u>Week 1</u>		Blue Skies RAF Cosford	Year 11 Parents Evening 15:45 – 18:45	

Sports Fixtures

DATE	SPORT	RETURN	LOCATION
MON	Year 7 Football @ Burton Borough	16:30	AWAY
MON	UI4 Girls County Cup Football @ Shrewsbury School	16:45	AWAY
WED	UI6 Girls Co Cup/District Cup Football @ William Brookes	16:30	AWAY
FRI	UI4 County Cup Football @ Corbett	16:15	AWAY

Week Commencing 12/01/26

January 1st – 31st: CERVICAL CANCER AWARENESS MONTH - Cervical Cancer Awareness Month takes place every January to increase understanding and education about cervical cancer.

January 1st – 31st: WALK YOUR DOG MONTH - Walk Your Dog Month takes place throughout January, an opportunity for dog owners to kick start their New Year's resolutions by embracing the great outdoors your furry friend!

Monday 12th: WORK HARDER DAY - A motivational reminder to push ourselves a little further in personal goals, ambitions, or creative projects. This day encourages you to dedicate extra time and energy to your work or tasks and assess how you can work harder to achieve them, all while fostering a sense of determination and resilience.

Wednesday 14th: MAKAR SANKRANTI - Seasonal Hindi celebrations marking turning of the sun towards the north

Reminders and Assembly Rota

Please remember
to follow the
one way system
around school

Face to Face or Virtual

MON	YEAR 7	PRA	Face to Face
TUES	YEAR 8	PRA	Face to Face
WED	YEAR 9	PRA	Face to Face
THURS	YEAR 10	PRA	Face to Face
FRI	YEAR 11	PRA	Face to Face

This week is:

Timetable

Week 1



Classroom Entry & Exit Routines

How we enter a classroom:



Get to your class as quickly as possible.



Go straight into your classroom.
Do not line up or wait outside.



Greet your teacher positively:
'Good morning, Sir. How are you, Miss?'



Teacher checks uniform as you enter.
Uniform concerns are logged.



Students enter quietly in a
calm and purposeful manner.



Sit down and get equipment out straight away.



Begin the starter task in silence.

How we leave a classroom:

Pack your equipment away
when the teacher tells you.



Stand behind your chair.



Check your uniform
(blazer is on and shirt is tucked in).



You will not be allowed to leave
until your uniform is perfect.



You will be dismissed table by table in an
organised, calm and timely manner.



Uniform Reminders

Uniform concern logs can be viewed by parents by accessing the My Child at School website/app:

<https://www.mychildatschool.com/MCAS/MCSParentLogin>. The website/app can also be used to track House Points, sanctions (including C1's, C2's, BRR and Homework Concerns), your child's academic progress and key messages regarding attendance and attitude to learning. We strongly advise you gain access to this and review it regularly to enable you to work alongside us from home.

Please see key reminders regarding proper uniform below to help you and your child ensure they are meeting the schools' expectations and are able to wear their uniform with pride:

Boys

- Blazer and year group tie
- Pale blue shirt (Years 7 - 10)
- White shirt (Year 11)
- Plain black trousers (not jeans)
- Black/grey socks
- Navy V-neck pullover with school crest (Optional to be worn under the blazer)
- Plain black shoes (No trainers or canvas shoes)

Girls

- Blazer and year group tie
- Pale blue shirt - Revere collar is not allowed (Years 7 - 10)
- White shirt - Revere collar is not allowed (Year 11)
- Black tailored trousers (not skinny trousers or leggings, straight leg only), or Black knee length pleated skirt.
- Black or white socks or black tights
- Plain black flat walking shoes – Max. heel height 4cms. Max Sole 2cms
- Navy V-neck pullover with school crest (Optional to be worn under the blazer)
- Muslim girls may wear a navy-blue hijab and a navy blue kameez, abaya or maxi skirt with black trousers. Students are expected to wear a tie and blazer with their kameez, abaya or maxi.

Students should not wear hoodies or sweatshirts under their blazers at any time, including breaks or lunchtimes.

Uniform Bank

Take what you need, give what you can.



- Do you need help obtaining uniform?
- Do you wish to swap any items of uniform that are in good condition but no longer fit?

We have uniform and PE Kit available for a voluntary donation

**Please ask at Reception or email
reception@charlton.uk.com**

CHARLTON SCHOOL

*Providing an environment in which all students can succeed,
with learning at the heart of all we do.*

Please can you continue to send in any items of Uniform you no longer require, especially blazers, and if you would like to swap sizes, please pop in and ask for Mrs Kinsey or Miss Littleford, or visit Pastoral.



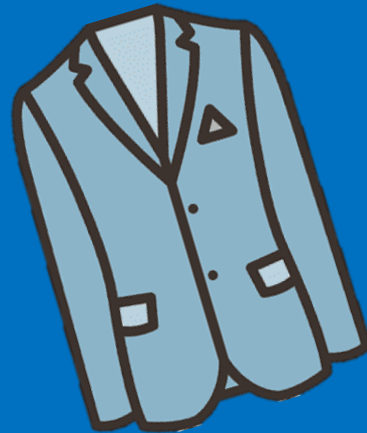
**** We are in need of shoes, trainers and PE Kit, as well as blazers and ties****

Please drop off any donations in reception.

Your contributions really do make a difference.

We are really grateful for your support,
Thankyou – Mrs Kinsey – Deputy DSL

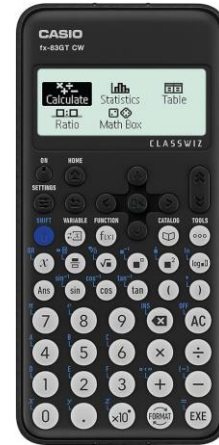
THANK YOU!



Remember your correct Uniform & Equipment

■ Essential Equipment

- 2x Pens
- 1x Pencil
- Red pen for Close The Gap work
- Ruler
- Scientific Calculator
- Protractor



Calculators are available to buy from the finance office in school for £11.

Charlton School Uniform Guide 2025/26

Full Policy can be found at www.charlton.uk.com



Shirts, Ties
& Blazers



Hoodies or Zip up Jackets should not be worn instead of School blazers.

Uniform Guide
2025/26



Skirt Length:
Knee length
pleated skirts only



Trousers:
Boys & Girls

No leggings, skinny or
tight trousers.
Straight leg only

Earrings:



Yes - Black leather style school shoes

Footwear:

No - Sports trainers
(air bubbles or canvas)



Reminder!



Please can parents/carers make sure
they name student clothes and bags.
When they are lost this makes it
possible to find them again!



Our British Values

Democracy



Rule of Law



Mutual Respect



Individual Liberty



Tolerance



Democracy

Democracy can be seen as a state of society characterised by equality of rights and privileges. It can also refer to our nation's electoral systems.

Rule of Law

It is expected that while different people may hold different views about what is 'right' and 'wrong', all people living in England are subject to its law.

Mutual Respect

The proper regard for an individual's dignity, which is reciprocated.

Individual Liberty

Individual liberty suggests the free exercise of rights generally seen as outside Government control.

Tolerance

A fair, objective, and permissive attitude to those whose faith, religion and beliefs may differ from one's own.

RESPECT

RESILIENCE

RESPONSIBILITY





The Charlton Virtue in Focus is:

Courage

RESPECT

RESILIENCE

RESPONSIBILITY



CANTEEN LUNCH MENU

WEEK 2	MONDAY	TUESDAY	WEDNESDAY	THURSDAY	FRIDAY
OPTION 1	SWEET & SOUR VEGETABLES WITH POTATO WEDGES	BEEF LASAGNE WITH GARLIC BREAD AND SLAW	CHEF'S PIE OF THE DAY WITH NEW POTATOES	JERK CHICKEN WRAP WITH WEDGES & PINEAPPLE SLAW	CHIP SHOP FRIDAY SERVED WITH CHIPS, MUSHY PEAS AND GRAVY/CURRY SAUCE
OPTION 2	CRUNCHY VEGETABLE PASTA BAKE WITH GARLIC BREAD	VEGETABLE LASAGNE WITH GARLIC BREAD AND SLAW	LEEK, ONION & POTATO TRAY BAKE	CURRIED SQUASH & BUTTERBEAN STEW WITH RICE AND PEAS & SLAW	VEGETABLE BURGER WITH CHIPS
ON THE SIDE	VEGETABLES OF THE DAY	VEGETABLES OF THE DAY	VEGETABLES OF THE DAY	VEGETABLES OF THE DAY	VEGETABLES OF THE DAY
DESSERT OF THE DAY	SELECTION OF HOMEBAKES	SELECTION OF HOMEBAKES	HOT PUDDING & CUSTARD	HOT PUDDING & CUSTARD	SELECTION OF HOMEBAKES
ALSO AVAILABLE: SOUP OF THE DAY FILLED JACKET POTATOES	CHECK OUT... OUR HOT AND COLD GRAB & GO SECTION		ALLERGIES PLEASE SPEAK TO A MEMBER OF STAFF IF YOU HAVE ANY ALLERGY AND NEED TO KNOW WHAT'S INSIDE OUR FOOD DISHERS, THEY WILL ADVISE YOU OF THE AVAILABLE CHOICES.		

Look out for a purple lanyard



These are Charlton's main DSL's:

If you see a member of staff wearing a purple lanyard, this means they are a designated safeguarding lead.

They have had specific training for dealing with any safeguarding matters that you may have.

If you have any worries or concerns do not hesitate to go to them to report any safeguarding concerns or for help and advice.



GOT OVERDUE BOOKS?

**WE CURRENTLY HAVE OVER
100 OVERDUE LIBRARY BOOKS!**

**PLEASE RETURN THEM TO THE
RETURNS BOX IN THE LIBRARY!**



**IF YOU ARE UNABLE TO RETURN YOUR BOOKS,
PLEASE SEE MISS WHITFORD IN THE LIBRARY AS SOON AS POSSIBLE.**

Sparx Reader

YEAR 7



1) Jacob K (Jacob the Strategist) 1,153



2) Izzy B (Izzy the Infinity) 898



3) Isabella U (Isabella the Artist) 516

Sparx Reader

YEAR 8



1) Nnedinma O-E (Nnedinma the Mastermind) 952



2) Aubrie J-C (Aubrie the Majesty) 604



3) Tomasz W (Tomasz the Charismatic) 328

Sparx Reader

YEAR 9



1) Sumeet P (Sumeet the CEO) 926



2) Sophie W (Sophie the Superhero) 718



3) Lucy W (Lucy the Orator) 523

Sparx Reader

YEAR 10



1) Alyssa W (Alyssa the Magician) 348



2) Helena F (Helena the Icon) 330



3) Lewis F (Lewis the Builder) 313

Sparx Reader

YEAR 11



1) Ramshaad K (Ramshaad the Guide) 309



2) Annalise H (Annalise the Pilot) 307



3) Noah D (Noah the Prodigy) 236

Sparx Reader

TERM CHAMPIONS!

WELL
DONE

- | | |
|-----|---|
| 1) | Jacob K (Jacob the Strategist) 33,221 |
| 2) | Catherine A (Catherine the Marvel) 32,463 |
| 3) | Qais S (Qais the Boss) 24,744 |
| 4) | Abdullah C (Abdullah the Nemesis) 22,330 |
| 5) | Alicia E (Alicia the Starlight) 21,117 |
| 6) | Sophie B (Sophie the Star) 19,665 |
| 7) | Nobrianna B (Nobrianna the Rebel) 17,558 |
| 8) | Barbara G (Barbara the Miracle) 14,642 |
| 9) | Benjamin S (Benjamin the Peacemaker) 11,361 |
| 10) | Paven T (Pavan the Monarch) 11,304 |

GOOD
WORK!

Sparx Maths

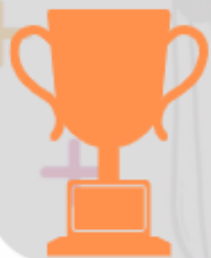
YEAR 7



1) Samuel Y (Samuel the Winner) 1,613



2) Jacob K (Jacob the Strategist) 1,380



3) Alishba K (Alishba the CEO) 1,320

Sparx Maths

YEAR 8



1) Josell M (Josell the Virtuoso) 1,090



2) Nana Y (Nana the Leader) 832



3) Catherine A (Catherine the Marvel) 809

Sparx Maths

YEAR 9



1)

Emily M (Emily the Scholar) 960



2)

Tayla P (Tayla the Whiz) 581



3)

Suraya A (Suraya the Intelligent) 373

Sparx Maths

YEAR 10



1) Mordecai B (Mordecai the Thunder) 1,040



2) Esha A (Esha the Majesty) 595



3) Anzhelika S (Anzhelika the Champion) 535

Sparx Maths

YEAR 11



1) Mia K (Mia the Mastermind) 2,975



2) Yomna M (Yomna the Pixel) 2,746



3) Kirsty A (Kirsty the Boss) 2,591

The background features a white surface with light blue horizontal lines. It is decorated with various colorful brushstrokes and patterns: a green swirl on the top left, a blue wavy shape on the top left, a purple star-like shape on the top right, a red spiral on the bottom left, and a yellow wavy shape on the bottom right. There are also several small red circular marks near the top right.

Inclusion Team Shoutouts!

Year 7

Matilda E

Jake N

Sophie T

Ava H

Kailen M

Jacob D

Annie F

Sophie S

Year 8

Year 9

Ollie P

Henley J

Dan S

LJ N

Toby P

Cal B

Amora MM

Jamie G

Year 10

Year 11

Which Tutor Group in each year will be TOP at the end of Term?



- 1) Least C2's
- 2) Most House Points
- 3) Least number of **NEGATIVE** Points



WEEK	1	2	3	4	5	6	7	8	9	10
Challenge 1 TOTAL										
Challenge 2 TOTAL										
Challenge 3 TOTAL										

Laminated sheets
will be shared next
week!

Winter WONDERLAND



Young Writers and Winter Wonderland invites you to
write a poem, in any style, on the theme of
WINTERTIME!



- Poems can be written or typed, and there is no line or word limit!
- Poems could be published in the Winter Wonderland poetry book.
- Plus, our favourite poet will also win a prize!

Please return all entries to Miss Whitford in the Library.
Closing Date: Friday 20th Feb 2026



YEAR 11

LANGUAGES!

ANY YEAR 11 WHO THINK THEY MAY BE ELIGIBLE
TO TAKE A GCSE IN THE LANGUAGE THEY SPEAK AT
HOME

(EG. POLISH OR ITALIAN)

PLEASE SEE MRS HAYWARD IN MFL5
AS SOON AS POSSIBLE.

YOU MUST BE ABLE TO DO LISTENING, SPEAKING,
READING AND WRITING IN THE LANGUAGE!!!





Year 10 Work Experience

18th to 22nd May 2026



DEADLINES:

In County:
27th March 2026

Out of County:
13th February 2026

Please complete
your
Employer
forms!





Paris Trip 2026

OPEN TO YEAR 9 AND 10
PLEASE SEE MRS FOY FOR A LETTER IF YOU ARE
INTERESTED IN GOING!



Barcelona TRIP JUNE 27



If you are studying or want to take GCSE Art and/or GCSE Textiles (Current Year 9s & 10s Only) and haven't already done so please get a trip letter from AR2, Miss Gibb for our Barcelona Trip in June 2027.

We only have a couple of places left!





SCHOOL NURSE DROP IN MONDAY AND WEDNESDAY WHAT WE CAN OFFER YOU:

A SCHOOL NURSE WILL ATTEND YOUR SCHOOL WEEKLY FOR HEALTH DROP-IN SESSIONS, THESE ARE A CONFIDENTIAL PROVIDING ADVICE, SUPPORT, AND SIGNPOSTING FOR PHYSICAL AND EMOTIONAL HEALTH.

A SCHOOL NURSE CAN PROVIDE YOU WITH A C-CARD FOR FREE CONDOMS, SEXUAL HEALTH ADVICE AND SUPPORT

OUR EMOTIONAL HEALTH AND WELLBEING LEAD NURSE ALSO RUNS A CLINIC FOR PARENTS EVERY MONDAY, 9-2PM AT SUTTON HILL MEDICAL PRACTICE (ONLINE APPOINTMENTS ALSO AVAILABLE UPON REQUEST ON 0333 358 3328).

YOUNG PEOPLE CAN CALL THE HEALTH FOR TEENS LINE TO CONFIDENTIALLY SEEK SUPPORT ON 07520619051

**ASK YOUR SCHOOL TO REFER IN OR SELF-REFER BY CALLING US ON
0333 358 3328**



theccard

HEALTH FOR TEENS

**YOUNG
MiNDS
kooth**

**PLEASE REMEMBER TO
SIGN IN
WHEN USING THE LIBRARY
DURING BREAK AND LUNCH
TIMES!**



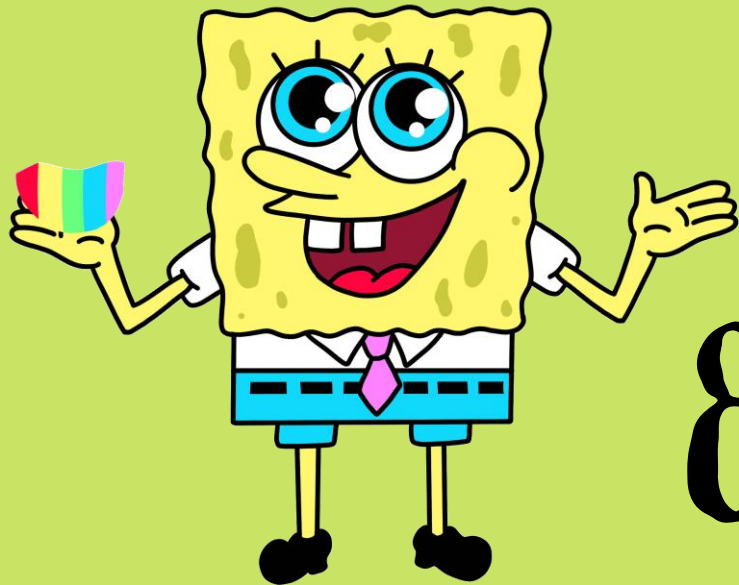


HURRAH!



TOP ATTENDANCE

TOTAL



SINCE THE START OF TERM

100.00%

TUTOR GROUPS

8.6 AND 7.7





House Activities

HOUSE	POINTS
Birch	80519
Willow	79052
Hawthorn	77809
Sycamore	66242

House	Weekly Points
Willow	1229
Sycamore	997
Birch	1641
Hawthorn	1564

Top house this week:
Birch



Cumulative Tutor Points so far this term:

7-01	4097
7-02	3595
7-03	7481
7-04	6628
7-05	3121
7-06	7237
7-07	4368
7-08	4624
7-09	4631

8-01	3865
8-02	4087
8-03	5362
8-04	4517
8-05	5823
8-06	6604
8-07	6640
8-08	6430
8-09	5095

9-01	4049
9-02	3129
9-03	4019
9-04	6336
9-05	5348
9-06	3946
9-07	3150
9-08	4402
9-09	3228

10-01	2636
10-02	3859
10-03	2126
10-04	4558
10-05	4580
10-06	4810
10-07	8716
10-08	2430
10-09	2871

11-01	3183
11-02	3132
11-03	3840
11-04	2444
11-05	2961
11-06	2498
11-07	3986
11-08	3168
11-09	3032

Week 16



Top Tutor Group for each House



7.1



7.3



8.6



TOP
FORM IN
SCHOOL!!

10.7

DONATIONS NEEDED!

ART/TEXTILES ARE LOOKING FOR THE FOLLOWING ITEMS:

RECORDS

CDS

CASSETTE TAPES

ROAD MAPS

OS MAPS

PLEASE BRING ANY DONATIONS TO THE ART/TEXTILES ROOMS!





**MESSAGE
FROM ART!
WE NEED ANY OLD
MAGAZINES FOR AN
UPCOMING ART
PROJECT! PLEASE DROP
THEM INTO RECEPTION IF
YOU HAVE ANY.**

**GOT BOOKS AT HOME YOU DON'T READ
ANYMORE?**

CONSIDER DONATING THEM TO THE LIBRARY!



PLEASE BRING ANY UNWANTED BOOKS TO MISS WHITFORD IN THE LIBRARY!

FOLLOW OUR INSTAGRAM ACCOUNTS TO SEE THE WONDERFUL WORK
CREATED BY THE TALENTED STUDENTS HERE AT CHARLTON!

Follow



@CHARLTONSCHOOLGEO

@CHARLTONSCHOOLEXPRESSIVEARTS

@CHARLTONSCHOOLMEDIA

@CHARLTONSCHOOLPE

@CHARLTONSCHOOLART

@CHARLTONSCHOOLREVISION

A row of colorful hearts in rainbow colors (red, orange, yellow, green, blue, purple) at the top of the page. Below them, four individual hearts in different colors: a pink and yellow heart, a trans flag heart, a rainbow heart, and a bi flag heart.

LGBTQ+ CLUB

FRIDAYS WEEK 2 DURING FORM TIME 8.45-9.15,

IN THE DRAMA STUDIO.

**Any questions please speak to
Mr Drugan (MFL1)**





CHARLTON SCHOOL TECHNOLOGY DEPARTMENT INVITES YOU TO:

CATERING CLUB FOR YEAR 9

TC7 EVERY WEDNESDAY
FROM 3.10-4.10

THIS CLUB IS TO A COOKING CLUB WHERE YOU WILL
MAKE A RANGE OF SWEET AND SAVOURY ITEMS.

SIGN UP SHEET WILL GO UP OUTSIDE TC7 ON
THURSDAYS THE WEEK BEFORE- MUST SIGN UP AS
PLACES ARE LIMITED.

Pickleball Club

On Thursdays Week 1 with
Miss Dubocquet
3:10-4:10



CREATIVE CRAFT CLUB

FRIDAY 16TH JANUARY IN TC4!

SIGN UP SHEETS OUTSIDE TC4,

PLEASE ADD YOUR NAMES

EVERY WEEK!

THEME IS: VALENTINES CRAFTS!

LIMITED TO
15
SPACES!!!!



Dance Company Rehearsals

**Every Wednesday after
school in the Main Hall**

3:10-4:10PM

CHOIR!

Wednesdays
3:10-4:10pm





KS3 Dance Club

**Tuesdays
3:10-4:10pm**





ART CLUB

EVERY TUESDAY
AFTERSCHOOL IN AR1
3:10PM - 4:10PM
YEARS 7-9



HOMEWORK CLUB!

**Tuesday and Wednesday
after school in NU4!**



SOCIAL CLUB!

Every Thursday
in NU4


INVITE
ONLY!



TIME FOR A NEW START



TIME TO SET
YOURSELF TARGETS
AND GOALS...



**Which Tutor Group
in each year
will be
TOP at the
end of Term?**

**Holocaust
Memorial Day
- Y9 Writing
Competition**



COMING SOON

Valentines

**Chinese New
Year**



**LGBTQ+
Awareness
Month**

**Ribbons
sold from
01/02/26!**



After School/Lunch Extra Curricular Activities

Club / Activity / Term	Day and Times	Location	Available to the following year groups					Additional Information e.g. equipment needed etc.
			7	8	9	10	11	
Stem Club	Monday 3:10pm to 4:10pm	SC7	✓	✓				This club is invite only.
Bridge Homework Club	Tuesday 3:10pm to 4:10pm	NU4	✓	✓	✓	✓	✓	
Library Access	Monday to Thursday 3:10pm to 4:00pm Friday 3:10-3:30pm	Library	✓	✓	✓	✓	✓	
Diversity LGBTQ+ CLUB	Monday 3:10pm to 4:10pm Week 2 Only	MA5	✓	✓	✓	✓	✓	
D of E - Mrs Bird	Monday 3:10pm to 4:10pm	Main Hall			✓			Usually from Feb to July. Please see Mrs Bird
Bridge Social Club	Wednesday & Thursday 3:10 pm to 4:10 pm	NU4	✓	✓	✓	✓	✓	By invitation only
MFL Club	Thursday 3:10pm to 4:10pm Week 2 Only	MFL5	✓	✓	✓	✓	✓	
Creative Craft – Mrs Turner	To be confirmed	TC4	✓	✓	✓	✓	✓	This club will be starting in October.
Strategy Games Club & Chess Club – Mr Millar	Tuesday 3:10pm to 4:10pm	PE1	✓	✓	✓	✓	✓	You can bring your own cards if you wish.
Dungeon and Dragons Club	Monday 3:10 - 4:10pm	PE1	✓	✓	✓	✓	✓	
KS3 Art Club	Tuesday 3:10 - 4:10pm	AR1	✓	✓	✓			
KS4 Art Club	Thursday 3:10 - 4:10pm	AR1				✓	✓	
Year 11 Study Zone	Everyday 3:10 - 4:10pm	TBC					✓	
Maths Homework Club	Wednesday 3:10 - 4:10pm	MA7	✓	✓	✓	✓	✓	
UNICEF Project	Tuesday 3:10 - 4:10pm Week 2 ONLY	HU5			✓	✓	✓	Invite only

⇒ ⇒ 3:10pm-4:10pm

Expressive Arts Extra Curricular Activities

	ART	DRAMA	DANCE	MUSIC
MONDAY	<u>School Show Principal Rehearsals</u> Monday rehearsals will need to be attended by anyone who has a principal role in the school production. If you are unsure whether this applies to you, please check with one of the Expressive Arts teachers. Time: 3:10-4:10 Location: Main Hall/DRI Teacher: Expressive Arts Department		<u>Street Dance - TBC</u> Entry by audition, open to all if you have an interest to Dance come along and audition. Led by professional Street Dance choreographer and Dancer Abbie. Time: 3:10-4:10 Location: DRI/MUI Teacher: Abbie	
TUESDAY	<u>Charlton Art Club</u> Open to any KS3 students with an interest in Art. Led by our talented Arts Ambassadors. Time: 3:10-4:10 Location: ARI Teacher: Arts Ambassadors		<u>KS3 Dance Club</u> Open to any KS3 students with an interest in dance. Led by our talented Arts Ambassadors. Time: 3:10-4:10 Location: Main Hall Teacher: Arts Ambassadors	<u>Rock School</u> Bring your guitar, drumsticks or voice and be part of a rock band. Welcome to all levels and abilities but limited places are available – please speak to Mrs. Crampsie if interested. Time: 3:10-4:10 Location: MUI/Practice Rooms Teacher: D Wooley/ S Delves
WEDNESDAY			<u>Dance Company</u> For students with an interest in dance. It will be by invitation only and auditions. Time: 3:10-4:10 Location: Main Hall Teacher: Mrs Wellings	<u>Charlton Choir</u> Open to all year groups and abilities – singing is proven to help with stress, confidence, improve memory and allows you to express yourself and build a sense of community. I hope to see you there! Time: Location: 3:10-4:10 MUI Teacher: Mr Allen
THURSDAY		<u>School Show – Full Cast Rehearsals</u> Rehearsals will need to be attended by everyone who is in the show, including the backstage and technical teams – set and costume designers must attend the meeting in ARI. Speak to Mrs Crampsie if you would like to take part in the show and have not already signed up. Please check the cast list outside MUI/DRI if you are unsure of your role. Time 3:10-4:10 Location: Main Hall Teacher: Expressive Arts Department		
FRIDAY				

⇒ ⇒ **3:10pm-4:10pm**

PE Extra Curricular Activities

	MAIN HALL / FITNESS SUITE	SPORTS HALL	FIELD	TENNIS COURTS
MONDAY	<u>After School</u> Cambridge National / GCSE- catch up – PEI	<u>After School</u> Badminton All Years Ms Byrne	<u>After School</u>	<u>After school</u>
TUESDAY	Staff Meetings <u>After School</u>	Staff Meetings <u>After School</u> Basketball KS4 Mr Thomas	Staff Meetings <u>After School</u>	Staff Meetings <u>After School</u>
WEDNESDAY	<u>After school</u> Staff Fitness Body Pump	<u>After School</u> Netball All years Mrs Johnson	<u>After School</u> Boys Football Year 9,10 & 11 Boys Mr Jones / Mr Lawton / Mr Thomas Year 7 and 8 Boys Mr Jones Girls Football All Years Ms Byrne	<u>After School</u>
THURSDAY	<u>After School</u> Staff Fitness Body Pump	<u>After School</u> Girls Indoor cricket Miss Fozzard All Years	<u>After School</u> Rugby Boys all years Mr Lawton	<u>After School</u>
FRIDAY	<u>After School</u> Fitness / Weight Training All Years Boys & Girls Mr Thomas	<u>After School</u> Basketball KS3 Mr Thomas	<u>After School</u> Girls rugby All years Miss Fozzard and Miss Morris	<u>After School</u> Cambridge National / GCSE- catch up – PEI

⇒ ⇒ **3:10pm-4:10pm**