



Student Bulletin



Calendar Events

Monday	Tuesday	Wednesday	Thursday	Friday
Week 2	Year 7 End of Year Summative Assessment	Year 7 End of Year Summative Assessment	Year 7 End of Year Summative Assessment	Year 7 End of Year Summative Assessment
Year 7 End of Year Summative Assessment	Year 8 End of Year Summative Assessments	Year 8 End of Year Summative Assessments	Year 8 End of Year Summative Assessments	Year 8 End of Year Summative Assessments
Year 8 End of Year Summative Assessments	Choir at Ercall 08:45 – 11:30	Unify Year 7 Trip to Harper Adams		
Year 10 Mock Exams	Year 10 Mock Exams	Year 10 Mock Exams	Year 10 Mock Exams	Year 10 Mock Exams

Week Commencing 22/06/26

Tuesday 23rd – INTERNATIONAL WOMEN IN ENGINEERING DAY: Promoting the amazing work that Women Engineers across the globe are doing!

Tuesday 23rd – PUBLIC SERVICE DAY: Celebrating our amazing Public services and the wonderful people (Police, Fire Departments, Healthcare Workers, Emergency Services) who help our community. 🚔 🚒 🚑

Wednesday 24th – NATIONAL WRITING DAY: Encouraging everyone to find their voice through writing, sharing ideas, telling stories and expressing how we feel. Let's put pen to paper and express ourselves! ✍️

Friday 26th – ASHURA: A day of fasting observed on the 10th day of the month of Muharram to celebrate Moses' exodus from Egypt.

Reminders and Assembly Rota

Sports Fixtures

DATE	SPORT	RETURN	LOCATION
WED	Athletics Championship @ Telford Athletics Track	17:30	AWAY
WED	Harper Adams	14:30	AWAY
WED	Leaders – Football Competition @ Tibberton Primary	13:45	AWAY
THURS	U15 Girls Cricket Competition @ Frankwell	13:15	AWAY
THURS	Year 7 & 8 Mixed Rounders	17:15	HOME

Face to Face or Virtual

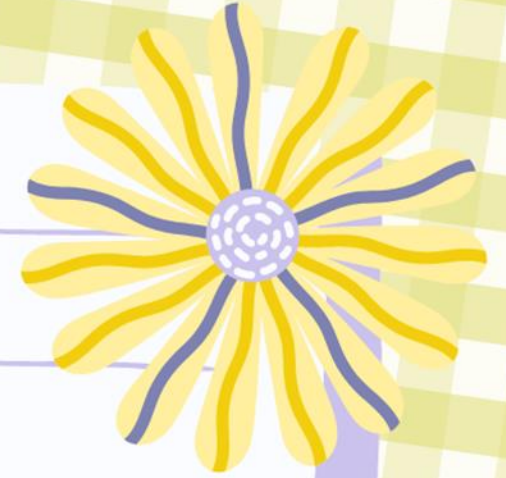
MON	Year 7	BAS	
TUES	Year 8	BAS	
WED	Year 9	BAS	
THURS	Year 10	BAS	
FRI	Year 11	BAS	

Please remember
to follow the
one way system
around school

This week is:



Timetable



Week 2



Classroom Entry & Exit Routines

How we enter a classroom:



Get to your class as quickly as possible.



Go straight into your classroom.
Do not line up or wait outside.



Greet your teacher positively:
'Good morning, Sir. How are you, Miss?'



Teacher checks uniform as you enter.
Uniform concerns are logged.



Students enter quietly in a
calm and purposeful manner.



Sit down and get equipment out straight away.



Begin the starter task in silence.

How we leave a classroom:

Pack your equipment away
when the teacher tells you.



Stand behind your chair.



Check your uniform
(blazer is on and shirt is tucked in).



You will not be allowed to leave
until your uniform is perfect.



You will be dismissed table by table in an
organised, calm and timely manner.



Uniform Reminders

Uniform concern logs can be viewed by parents by accessing the My Child at School website/app:

<https://www.mychildatschool.com/MCAS/MCSParentLogin>. The website/app can also be used to track House Points, sanctions (including C1's, C2's, BRR and Homework Concerns), your child's academic progress and key messages regarding attendance and attitude to learning. We strongly advise you gain access to this and review it regularly to enable you to work alongside us from home.

Please see key reminders regarding proper uniform below to help you and your child ensure they are meeting the schools' expectations and are able to wear their uniform with pride:

Boys

- Blazer and year group tie
- Pale blue shirt (Years 7 - 10)
- White shirt (Year 11)
- Plain black trousers (not jeans)
- Black/grey socks
- Navy V-neck pullover with school crest (Optional to be worn under the blazer)
- Plain black shoes (No trainers or canvas shoes)

Girls

- Blazer and year group tie
- Pale blue shirt - Revere collar is not allowed (Years 7 - 10)
- White shirt - Revere collar is not allowed (Year 11)
- Black tailored trousers (not skinny trousers or leggings, straight leg only), or Black knee length pleated skirt.
- Black or white socks or black tights
- Plain black flat walking shoes – Max. heel height 4cms. Max Sole 2cms
- Navy V-neck pullover with school crest (Optional to be worn under the blazer)
- Muslim girls may wear a navy-blue hijab and a navy blue kameez, abaya or maxi skirt with black trousers. Students are expected to wear a tie and blazer with their kameez, abaya or maxi.

Students should not wear hoodies or sweatshirts under their blazers at any time, including breaks or lunchtimes.

Uniform Bank

Take what you need, give what you can.



- Do you need help obtaining uniform?
- Do you wish to swap any items of uniform that are in good condition but no longer fit?

We have uniform and PE Kit available for a voluntary donation

Please ask at Reception or email reception@charlton.uk.com

CHARLTON SCHOOL

*Providing an environment in which all students can succeed,
with learning at the heart of all we do.*

Please can you continue to send in any items of Uniform you no longer require, especially blazers, and if you would like to swap sizes, please pop in and ask for Mrs Kinsey or Miss Littleford, or visit Pastoral.



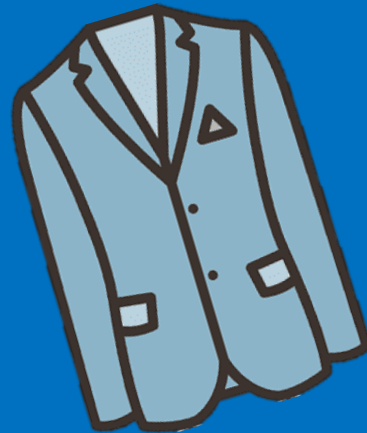
**** We are in need of shoes, trainers and PE Kit, as well as blazers and ties****

Please drop off any donations in reception.

Your contributions really do make a difference.

We are really grateful for your support,
Thankyou – Mrs Kinsey – Deputy DSL

THANK YOU!



Daily Equipment Check

Are you ready
To learn?

Stationery Shop
Available in the
Library

Scientific
Calculator

Pen

Pen

Red Pen

Pencil

Protractor

Ruler

Charlton School Uniform Guide 2025/26

Full Policy can be found at www.charlton.uk.com



Shirts, Ties
& Blazers



Uniform Guide
2025/26

Hoodies or Zip up Jackets should not
be worn instead of School blazers.



Skirt Length:
Knee length
pleated skirts only



Trousers:
Boys & Girls

No leggings, skinny or
tight trousers,
Straight leg only

Earrings:



Yes - Black leather style school
shoes

Footwear:

No - Sports trainers
(air bubbles or canvas)



Reminder!



Please can parents/carers make sure they name student clothes and bags.

When they are lost this makes it possible to find them again!



Our British Values

Democracy



Rule of Law



Mutual Respect



Individual Liberty



Tolerance



Democracy

Democracy can be seen as a state of society characterised by equality of rights and privileges. It can also refer to our nation's electoral systems.

Rule of Law

It is expected that while different people may hold different views about what is 'right' and 'wrong', all people living in England are subject to its law.

Mutual Respect

The proper regard for an individual's dignity, which is reciprocated.

Individual Liberty

Individual liberty suggests the free exercise of rights generally seen as outside Government control.

Tolerance

A fair, objective, and permissive attitude to those whose faith, religion and beliefs may differ from one's own.

RESPECT

RESILIENCE

RESPONSIBILITY





The Charlton Virtue in Focus is:

Respect

RESPECT

RESILIENCE

RESPONSIBILITY



CANTEEN LUNCH MENU

WEEK 1	MONDAY	TUESDAY	WEDNESDAY	THURSDAY	FRIDAY
OPTION 1	MAC AND CHEESE WITH CRUNCHY TOPPING	BEEF CHILLI WITH RICE AND SOUR CREAM	PORK OR CHICKEN SAUSAGE WITH ROAST POTATOES & GRAVY	CHICKEN TIKKA CURRY WITH 50/50 RICE	CHIP SHOP FRIDAY WITH CHIPS AND GARDEN PEAS
OPTION 2	QUORN & VEGETABLE CHOW MEIN	FALAFEL WRAPS WITH COUSCOUS AND MINT & YOGHURT DIP	VEGAN SAUSAGE WITH ROAST POTATOES & GRAVY	SWEET POTATO & CHICKPEA CURRY WITH 50/50 RICE	CHEESE & LEEK PASTA BAKE WITH CHIPS AND GARDEN PEAS
ON THE SIDE	VEGETABLES OF THE DAY	VEGETABLES OF THE DAY	VEGETABLES OF THE DAY	VEGETABLES OF THE DAY	VEGETABLES OF THE DAY
DESSERT OF THE DAY	SELECTION OF HOMEBAKES	SELECTION OF HOMEBAKES	HOT PUDDING & CUSTARD	SELECTION OF HOMEBAKES	SELECTION OF HOMEBAKES

ALSO AVAILABLE:
SOUP OF THE DAY
FILLED JACKET POTATOES

CHECK OUT...
OUR HOT AND COLD
GRAB & GO SECTION

ALLERGIES

PLEASE SPEAK TO A MEMBER OF STAFF IF YOU HAVE ANY
ALLERGY AND NEED TO KNOW WHAT'S INSIDE OUR FOOD
DISHES, THEY WILL ADVISE YOU OF THE AVAILABLE CHOICES.

Look out for a purple lanyard



These are Charlton's main DSL's:

If you see a member of staff wearing a purple lanyard, this means they are a designated safeguarding lead.

They have had specific training for dealing with any safeguarding matters that you may have.

If you have any worries or concerns do not hesitate to go to them to report any safeguarding concerns or for help and advice.



LGBTQ+ Club would like to wish you all a

Accept people
for who they are!

BE YOURSELF!
BE PROUD!

HAPPY PRIDE MONTH

We all
belong
here!

Stay true
to yourself!



CHOIR!

ALL members of choir

**(who performed in the Christmas concert, including
LCT choir members)**

**Please come to MU1 on Thursday morning
during form time!**



CHARLTON BURY 2026

MUSIC FESTIVAL — HOT DOGS — FOOD STALLS — DANCE — MUSIC — MUCH MORE

FRIDAY 10th JULY
4pm - 8pm

BUY YOUR WRISTBANDS FROM FINANCE!

£2.00 in Advance

£2.50 on the Door

(Free to Performers)



WE CURRENTLY HAVE A LARGE NUMBER OF
LIBRARY BOOKS OVERDUE!



PLEASE RETURN ANY LIBRARY BOOKS YOU
MAY HAVE, OR YOU WILL BE UNABLE TO
BORROW ANY MORE!



ANY ISSUES, PLEASE SEE MISS WHITFORD IN THE LIBRARY AS SOON AS POSSIBLE!

**Well Done to the
Charlton Dance Company
for their outstanding performance at
Dance Fest 2026
last week!**



SUMMER STORY

COMPETITION!

SUBMIT YOUR OWN SHORT STORY ABOUT
THE PERFECT SUMMER HOLIDAY

FOR A CHANCE OF WINNING
1 OF 3 SWEET TREAT BUNDLES!

ALL ENTRIES MUST BE BETWEEN 50 - 300 WORDS LONG
AND MUST FIT THE THEME OF A SUMMER HOLIDAY!

CLOSING DATE: FRIDAY 26TH JUNE!

PLEASE SUBMIT YOUR ENTRY TO MISS WHITFORD IN THE LIBRARY!





**Well Done to the
Charlton Theatre Company and Mr Hughes
for their brilliant performance of
The Girl from the Sea
last week!**



COMPETITION TIME!

SPORTS DAY IS FAST APPROACHING!

WE ARE CHALLENGING ALL #TEAMBLUE TO

DESIGN A CERTIFICATE FOR STUDENTS TO RECEIVE ON SPORTS DAY!



**PRIZE FOR THE BEST
FORM GROUP WHO
SEND THE MOST
DESIGNS!!!**



**PRIZE FOR THE
STUDENT WHO
CREATES THE
WINNING DESIGN!!!**

THEME IS



SPORTS/ATHLETIC EVENTS!

DEADLINE 19TH JUNE 2026! ALL ENTRIES NEED TO BE HANDED IN TO MRS DAVIES IN THE NURTURE KITCHEN!

SOS SAGAS

WANTED

CREATIVE WRITING COMPETITION FOR 11-18 YEAR-OLDS

WRITE YOUR OWN SHORT STORY FOR THE CHANCE

TO WIN:

£100 AMAZON GIFT CARD

AND A TROPHY!!!

YOUR STORY COULD ALSO BE PUBLISHED IN A YOUNGWRITERS BOOK, AVAILABLE IN THE LIBRARY!

FOR MORE INFORMATION, SEE MISS WHITFORD IN THE LIBRARY!

**100
WORD
LIMIT!!!**

**CLOSING
DATE:
13TH JULY!**

CHARLTONBURY CAKE STALL!

WE NEED YOUR DONATIONS!



Please bring in any Donations by Friday 10th July!

YEAR 7-11

Professional Cricket Match

Friday 26th June 2026 3:40pm - LATE

at Edgbaston Cricket Stadium

Birmingham Bears VS Worcestershire Rapids

T20 Vitality Blast

**First come,
first served
basis!!!
(40 spaces).**



Please collect a letters from Miss Fozzard in PE.

Payment to Mrs Hughes in Finance or on ParentPay.



Year 8!



**ATHLETICS
WEDNESDAY**



**PLEASE CHECK THE
PE NOTICE BOARD FOR
TEAM SHEETS FOR THIS
WEEKS SPORT
FIXTURES!!!**

**Rounders
Thursday**





A reminder that the
Red Box is available to
any students who need it!
Just ask for the Box at
Reception, Pastoral or the Media Hub!



Sparx Reader

YEAR 7



1) Bella D (Bella the Biologist) 1,226



2) Emilie T (Emilie the Aviator) 922



3) Maddie E (Maddie the Starlight) 887

Sparx Reader

YEAR 8



1) Alexander A (Alexander the Pilot) 5,549



2) Jacob B (Jacob the Thunder) 1,104



3) Loujayn E (Loujayn the Winner) 906

Sparx Reader

YEAR 9



1) Megan J (Megan the Conqueror) 1,502



2) May F (May the Twilight) 1,211



3) Elsie J (Elsie the Starfire) 1,121

Sparx Reader

YEAR 10



1) Ewan B (Ewan the Nimbus) 5,441



2) Grace D (Grace the Pilot) 896



3) Oanker G (Oanker the Pathfinder) 627

Sparx Reader

TERM CHAMPIONS!

WELL
DONE

- 1) Catherine A (Catherine the Marvel) 93,754
- 2) Jacob K (Jacob the Strategist) 78,252
- 3) Alicia E (Alicia the Genius) 39,508
- 4) Qais S (Qais the Leader) 36,475
- 5) Jessica T (Jessica the Bee's Knees) 33,161
- 6) Elsie J (Elsie the Starfire) 27,729
- 7) Ewan B (Ewan the Starfire) 26,994
- 8) Abdullah C (Abdullah the Nemesis) 26,871
- 9) Barbara G (Barbara the Sunshine) 25,854
- 10) Nobrianna B (Nobrianna the Rebel) 25,805

GOOD
WORK!

Sparx Maths

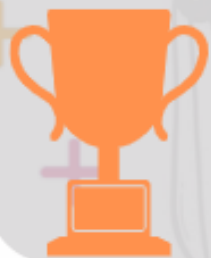
YEAR 7



1) Bo-Rae E (Bo-Rae the Icon) 2,044



2) Heidi Y (Heidi the Athlete) 1,477



3) Emilie T (Emilie the Aviator) 1,392

Sparx Maths

YEAR 8



1) Alexander Arsene (Alexander the Pilot) 5,655



2) Sandra W (Sandra the Performer) 3,270



3) Oliver H (Oliver the Pilot) 2,455

Sparx Maths

YEAR 9



1)

Layla B (Layla the Icon) 2,082



2)

Aldric N (Aldric the Star) 1,890



3)

Sumeet P (Sumeet the Summit) 1,255

Sparx Maths

YEAR 10



1) Remik O (Remik the Original) 3,996



2) Ian J-M (Ian the Innovator) 2,841



3) Oscar C (Oscar the CEO) 1,811

Sparx Science

YEAR 7



1)

Sydni H (Sydni the Athlete) 1,410



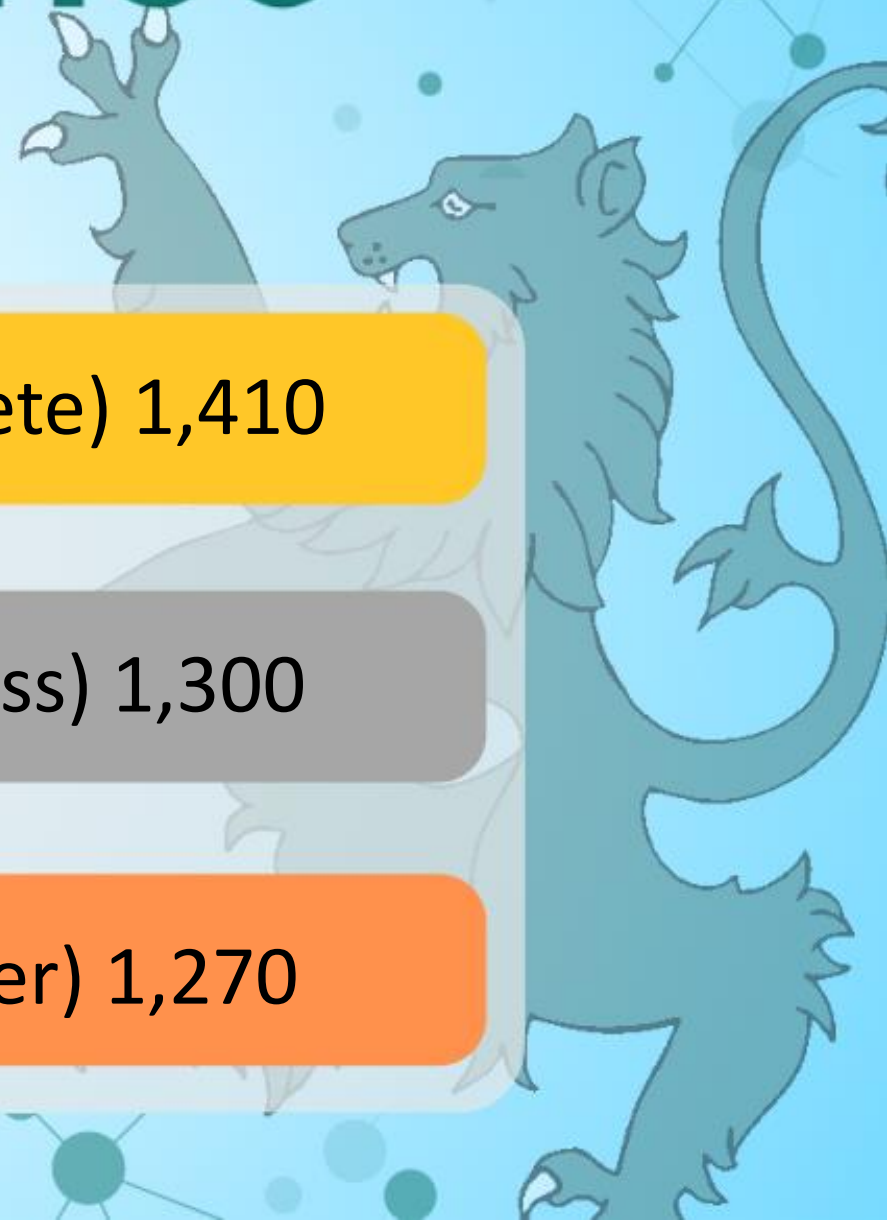
2)

Bobby F (Bobby the Boss) 1,300



3)

May M (May the Dancer) 1,270



Sparx Science

YEAR 8



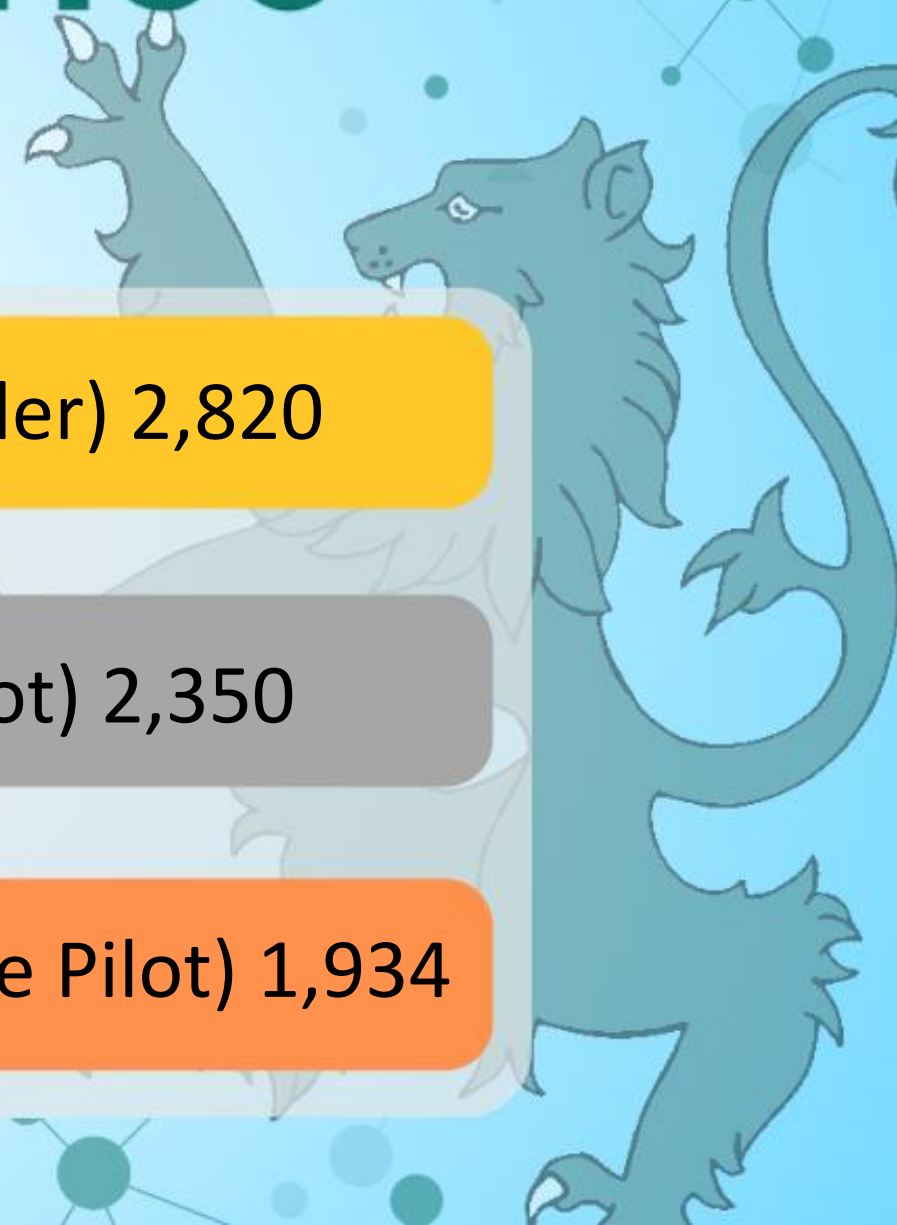
1) Noah P (Noah the Leader) 2,820



2) Oliver H (Oliver the Pilot) 2,350



3) Alexander A (Alexander the Pilot) 1,934



Sparx Science

YEAR 9



1)

Layla B (Layla the Icon) 2,240



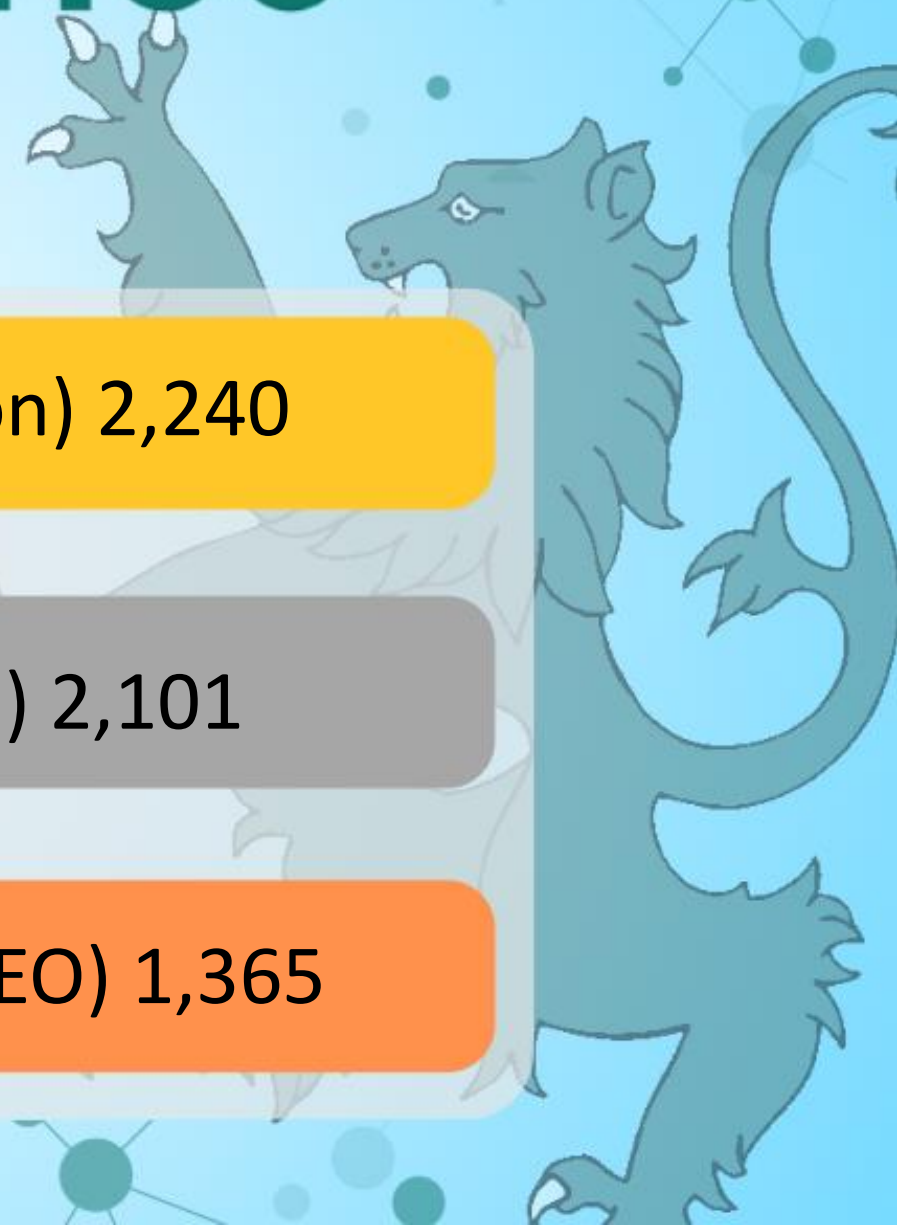
2)

Lily H (Lily the Storm) 2,101



3)

Nathan B (Nathan the CEO) 1,365



Sparx Science

YEAR 10



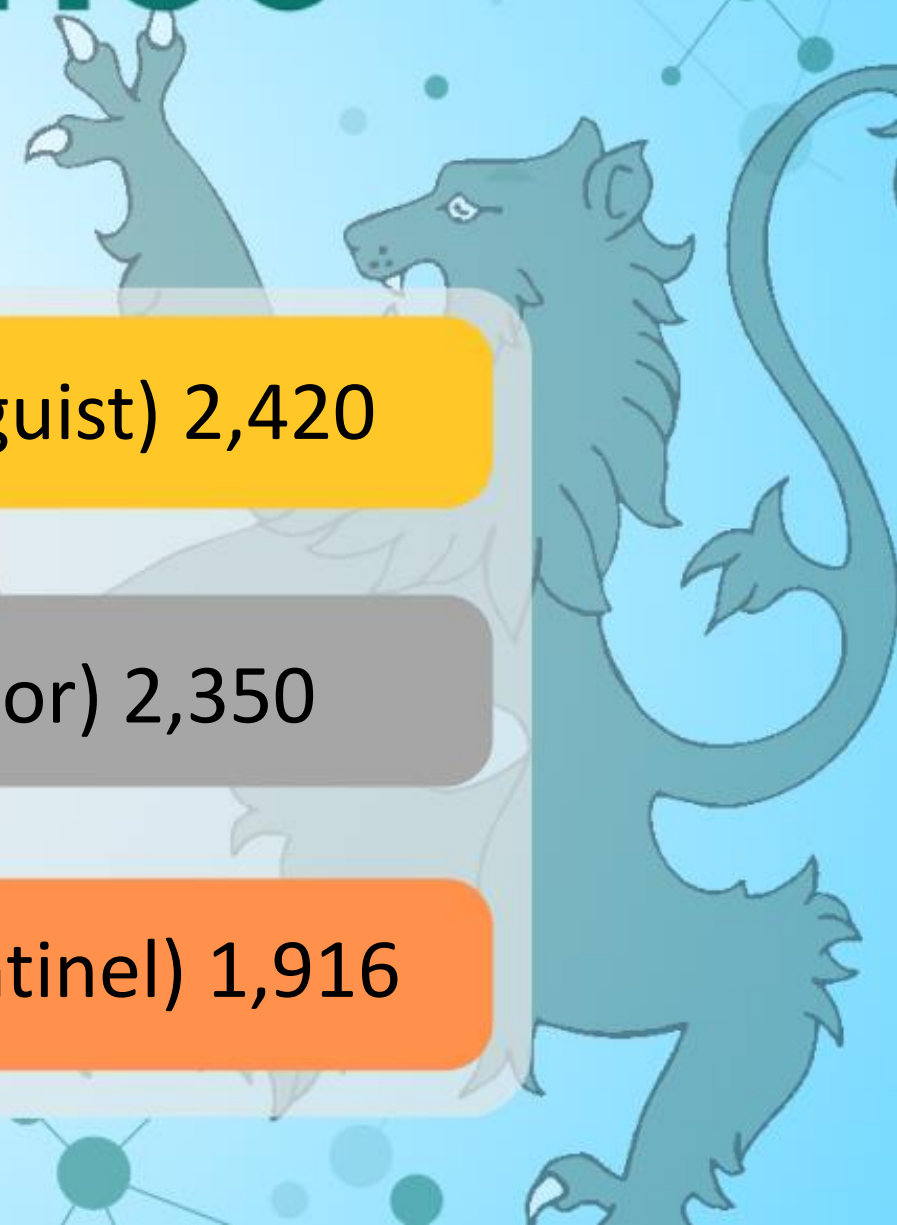
1) Daniel A (Daniel the Linguist) 2,420



2) Lena W (Lena the Creator) 2,350



3) Joseph K (Joseph the Sentinel) 1,916



The background features a white page with light blue horizontal lines. It is decorated with various colorful brushstrokes: a green circular shape on the left, a blue shape at the top left, a purple starburst on the top right, a red paw print at the top right, an orange shape at the bottom left, a red spiral at the bottom left, a yellow shape at the bottom right, and a green shape at the bottom right.

Inclusion Team Shoutouts!

Year 7

Charlotte DSB

Flo P

Jakub M

Amber A

Jake N

Alyssa B

Year 8

Alex C

Isabelle F

Cyan M

Year 9

Ollie B

Year 10

Sophie E

Lily R

Macy D

Seth G

Leon M

Year 11

SCHOOL NURSE DROP IN

MONDAYS 12 - 3PM

WHAT WE CAN OFFER YOU:

- A SCHOOL NURSE WILL ATTEND YOUR SCHOOL WEEKLY FOR HEALTH DROP-IN SESSIONS. THESE ARE CONFIDENTIAL, PROVIDING ADVICE, SUPPORT, AND SIGNPOSTING FOR PHYSICAL AND EMOTIONAL HEALTH.
- A SCHOOL NURSE CAN PROVIDE YOU WITH A C-CARD FOR FREE CONDOMS, SEXUAL HEALTH ADVICE AND SUPPORT.
- OUR EMOTIONAL HEALTH AND WELLBEING LEAD NURSE ALSO RUNS A CLINIC FOR PARENTS EVERY **TUESDAY (9-2PM)** AT SUTTON HILL MEDICAL PRACTICE
- (ONLINE APPOINTMENTS ALSO AVAILABLE UPON REQUEST ON **0333 358 3328**)
- YOUNG PEOPLE CAN CALL THE HEALTH FOR TEENS LINE TO CONFIDENTIALLY SEEK SUPPORT **(07520619051)**
- ASK YOUR SCHOOL TO REFER IN OR SELF-REFER BY CALLING US ON **0333 358 3328**

HEALTH FOR TEENS

NHS
Shropshire Community Health
NHS Trust



YOUNG MINDS **kooth**

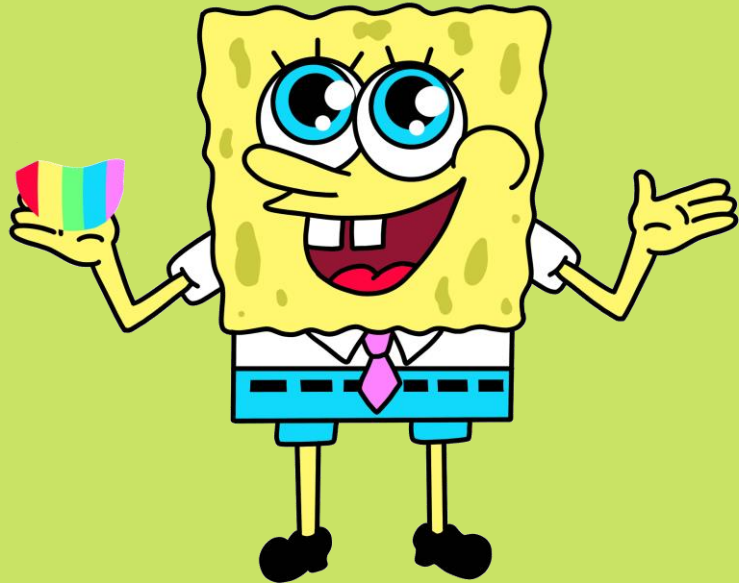


HURRAH!



TOP ATTENDANCE

TOTAL



SINCE THE START OF TERM

96.70%

TUTOR GROUPS

8.6





House Activities

HOUSE	POINTS
Birch	130,671
Willow	137,735
Hawthorn	131,590
Sycamore	119,456

House	Weekly Points
Willow	1,286
Sycamore	1,453
Birch	1,667
Hawthorn	1,564

Top house this week:
Birch



Cumulative Tutor Points so far this term:

7-01	8,475
7-02	7,730
7-03	16,901
7-04	13,671
7-05	7,644
7-06	16,490
7-07	10,640
7-08	9,591
7-09	15,843

8-01	8,304
8-02	12,205
8-03	11,050
8-04	8,986
8-05	9,506
8-06	11,413
8-07	12,395
8-08	9,330
8-09	8,791

9-01	6,974
9-02	7,020
9-03	7,513
9-04	12,024
9-05	8,340
9-06	6,078
9-07	5,401
9-08	10,169
9-09	5,692

10-01	5,024
10-02	7,929
10-03	4,010
10-04	8,834
10-05	8,394
10-06	7,513
10-07	15,602
10-08	5,343
10-09	6,114

11-01	4,761
11-02	5,102
11-03	5,911
11-04	3,616
11-05	4,639
11-06	4,237
11-07	7,433
11-08	4,430
11-09	5,503



Top Tutor Group for each House



8.2



7.3



7.6



7.9

STUDENTS WILL NOW NEED A

LIBRARY CARD

**TO ACCESS THE LIBRARY
AT BREAK/LUNCH TIMES!**



**Want to apply for a card?
Please see Miss Whitford!**

**DO YOU HAVE ANY
OLD SMALL OR BROKEN
PLASTIC TOYS
YOU NO LONGER WANT?**



PLEASE BRING
THEM TO
AR1



**YOUR DONATIONS
WILL BE USED
BY YEAR II'S
TO CREATE
FANTASTIC PIECES
OF ART!**



DONATIONS NEEDED!

ART/TEXTILES ARE LOOKING FOR THE FOLLOWING ITEMS:

RECORDS

CDS

CASSETTE TAPES

ROAD MAPS

OS MAPS

PLEASE BRING ANY DONATIONS TO THE ART/TEXTILES ROOMS!



FOLLOW OUR INSTAGRAM ACCOUNTS TO SEE THE WONDERFUL WORK
CREATED BY THE TALENTED STUDENTS HERE AT CHARLTON!

Follow



@CHARLTONSCHOOLGEO

@CHARLTONSCHOOLEXPRESSIVEARTS


@CHARLTONSCHOOLMEDIA

@CHARLTONSCHOOLPE

@CHARLTONSCHOOLART

@CHARLTONSCHOOLREVISION

@CHARLTONCAREERS



CREATIVE CRAFT CLUB

FRIDAYS IN TC4

3:10 - 4:10PM

**SIGN SHEETS BY
TC4. PLACES ARE
LIMITED!!!**

**STUDENTS MUST SIGN
UP BY THE WEDNESDAY
IN ORDER TO JOIN IN!**

WOMEN'S Empowerment Group

**EVERY MONDAY
DURING FORM
(8:55 - 9:15)**

**SESSIONS ARE
FUN,
INTERACTIVE
AND
INFORMATIVE!**

**(REMEMBER TO
GET YOUR
REGISTRATION
MARK FIRST
BEFORE COMING
TO CLUB!)**

MU1

EVERYONE WELCOME!



Textiles Club

3 sessions of TIE DYE

Monday 8th, 15th & 22nd June in AR2

**Bring a white item of clothing,
tote bag or item of choice to dye
(NOT TOO BIG)**

SIGN UP SHEET OUTSIDE AR2

A new sheet will be added weekly





Join us for

Sparx Science



Cricket Club

Two cricket bats and two red cricket balls are positioned on either side of the main title. The bats are light brown with dark handles, and the balls are bright red with white stitching.

THURSDAYS

3:10 - 4:10PM

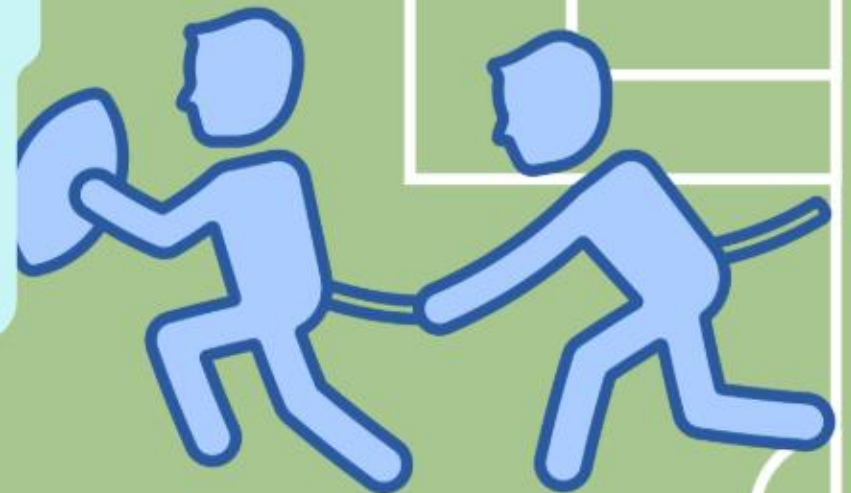
ALL AGES AND GENDERS WELCOME!



FLAG FOOTBALL



**MONDAYS
AFTER SCHOOL
3:10 - 4:10PM
WITH MR JONES**





LGBTQ+ CLUB



★ **THURSDAYS WEEK 1: 15.10-16.10**
IN MISS SAVAGE'S ROOM

★ **FRIDAYS WEEK 2: FORM TIME 8.30 - 9.15**
IN THE DRAMA STUDIO

**HEAD STRAIGHT TO CLUB,
WE CAN REGISTER YOU THERE! 😊**

ANY QUESTIONS PLEASE SPEAK TO MR DRUGAN (MFL1)





CHARLTON SCHOOL TECHNOLOGY DEPARTMENT INVITES YOU TO:

CATERING CLUB FOR YEAR 9

TC7 EVERY WEDNESDAY
FROM 3.10-4.10

THIS CLUB IS TO A COOKING CLUB WHERE YOU WILL
MAKE A RANGE OF SWEET AND SAVOURY ITEMS.

SIGN UP SHEET WILL GO UP OUTSIDE TC7 ON
THURSDAYS THE WEEK BEFORE- MUST SIGN UP AS
PLACES ARE LIMITED.

Pickleball Club

Fridays Week 1

with Miss Dubocquet



Dance Company Rehearsals

**Every Wednesday after
school in the Main Hall**

3:10-4:10PM

CHOIR!

Wednesdays
3:10-4:10pm





KS3 Dance Club

Tuesdays
3:10-4:10pm

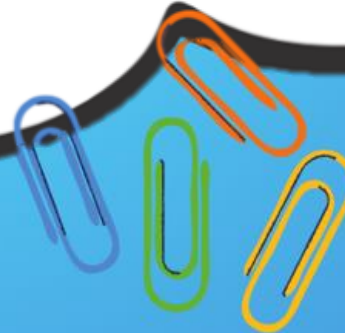




HOMework CLUB!

**Tuesdays after school
in NU4!**

CANCELLED WEDNESDAY



SOCIAL CLUB!

Every Thursday
in NU4

INVITE
ONLY!



STREET DANCE WITH KAYDON



EVERY MONDAY
AFTER SCHOOL!
IN DR1 3:10-4:10



COMING SOON



**SPORTS DAY
2026**

! GO TEAM !

This graphic features a green starburst background with orange and yellow accents. It includes illustrations of a male and female runner, and a group of four people cheering with their arms raised. A banner at the bottom reads '! GO TEAM !'.



**COMMONWEALTH
GAMES
2026**

This graphic features a teal starburst background with pink and purple accents. It includes an illustration of a person in a wheelchair holding a basketball, and a stylized trophy icon above the text.



**CHARLTONBURY
2026**

This graphic features an orange starburst background with blue and yellow accents. It includes illustrations of a person playing a guitar, two people dancing, and a colorful fairground scene with a carousel and a hot air balloon.

After Lunch / School - Extra Curricular Activities

Club / Activity / Term	Day and Times	Location	Available to the following year groups					Additional Information
			7	8	9	10	11	e.g. equipment needed etc.
Stem Club	Monday 3:10pm to 4:10pm	SC7	✓	✓				This club is invite only.
Bridge Homework Club	Tuesday & Wednesday	NU4	✓	✓	✓	✓	✓	
Library Access	Monday to Thursday 3:10pm	Library	✓	✓	✓	✓	✓	
Diversity LGBTQ+ CLUB	Thursday Week 1 3:10pm to 4:10pm	Thur - MA5 Fri - MFL1	✓	✓	✓	✓	✓	
D of E - Mrs Bird	Monday 3:10pm to 4:10pm	Main Hall			✓			Usually from Feb to July. Please see Mrs Bird
Bridge Social Club	Wednesday & Thursday	NU4	✓	✓	✓	✓	✓	By invitation only
MFL Club	Thursday 3:10pm to 4:10pm	MFL5	✓	✓	✓	✓	✓	
Creative Craft - Mrs Turner	Fridays 3:10pm to 4:10pm	TC4	✓	✓	✓	✓	✓	This club will be starting 19th September
Strategy Games Club &	Tuesday 3:10pm to 4:10pm	PE1	✓	✓	✓	✓	✓	You can bring your own cards if you wish.
Dungeon and Dragons Club	Monday 3:10 - 4:10pm	EN7	✓	✓	✓	✓	✓	
KS3 Art Club	Tuesday 3:10 - 4:10pm	AR1	✓	✓	✓			
KS4 Art Club	Thursday 3:10 - 4:10pm	AR1				✓	✓	
Catering Club	Wednesday 3:10pm - 4:10pm	TC7			✓			Limited Places
Year 11 Study Zone	Everyday 3:10 - 4:10pm	TBC					✓	
Maths Homework Club	Wednesday 3:10 - 4:10pm	MA7	✓	✓	✓	✓	✓	
UNICEF Project	Tuesday 3:10 - 4:10pm	HU5			✓	✓	✓	Invite only

3:10pm - 4:10pm

Clubs and fixtures are subject to staff availability and change.

We aim to update parents/carers using our social media channels as changes arrive, students are also verbally told during the school day.

Expressive Arts - Extra Curricular Activities

	ART	DRAMA	DANCE	MUSIC
MONDAY	<p>School Show Principal Rehearsals Monday rehearsals will need to be attended by anyone who has a principal role in the school production. If you are unsure whether this applies to you, please check with one of the Expressive Arts teachers. Time: 3:10-4:10 Location: Main Hall/DR1 Teacher: Expressive Arts Department</p>		<p>Street Dance - TBC Entry by audition, open to all if you have an interest to Dance come along and audition. Led by professional Street Dance choreographer and Dancer Abbie. Time: 3:10-4:10 Location: DR1/MU1 Teacher: Abbie</p>	
TUESDAY	<p>Charlton Art Club Open to any KS3 students with an interest in Art. Led by our talented Arts Ambassadors. Time: 3:10-4:10 Location: AR1 Teacher: Arts Ambassadors</p>		<p>KS3 Dance Club Open to any KS3 students with an interest in dance. Led by our talented Arts Ambassadors. Time: 3:10-4:10 Location: Main Hall Teacher: Arts Ambassadors</p>	<p>Rock School Bring you guitar, drumsticks or voice and be part of a rock band. Welcome to all levels and abilities but limited places are available – please speak to Mrs Crampsie if interested. Time: 3:10-4:10</p>
WEDNESDAY			<p>Dance Company For students with an interest in dance. It will be by invitation only and auditions. Time: 3:10-4:10 Location: Main Hall Teacher: Mrs Wellings</p>	<p>Charlton Choir Open to all year groups and abilities – singing is proven to help with stress, confidence, improve memory and allows you to express yourself and build a sense of community. I hope to see you there! Time: Location: 3:10-4:10 MU1 Teacher: Mr Allen</p>
THURSDAY		<p>School Show – Full Cast Rehearsals Rehearsals will need to be attended by everyone who is in the show, including the backstage and technical teams – set and costume designers must attend the meeting in AR1. Speak to Mrs Crampsie if you would like to take part in the</p>		
FRIDAY				

3:10pm - 4:10pm

Clubs and fixtures are subject to staff availability and change.

We aim to update parents/carers using our social media channels as changes arrive, students are also verbally told during the school day.

PE - Extra Curricular Activities

	MAIN HALL / FITNESS SUITE	SPORTS HALL	FIELD	TENNIS COURTS
MONDAY	<u>After School</u> Cambridge National / GCSE- catch up – PE1	<u>After School</u> Out of use due to exams	<u>After School</u> Rounders Ms Byrne	<u>After school</u>
TUESDAY	Staff Meetings <u>After School</u>	Staff Meetings <u>After School</u> Out of use due to exams	Staff Meetings <u>After School</u>	Staff Meetings <u>After School</u>
WEDNESDAY	<u>After school</u> Out of use due to exams	<u>After School</u> Out of use due to exams	<u>After School</u> Rounders Y7-10 Ms Byrne Athletics Miss Johnson Cricket Miss Fozzard All Years Athletics fixtures	<u>After School</u>
THURSDAY	<u>After School</u> Out of use due to exams	<u>After School</u> Out of use due to exams	<u>After School</u> Rounders Fixtures	<u>After School</u> Futsal Mr Hughes
FRIDAY	<u>After School</u> Out of use due to exams	<u>After School</u> Out of use due to exams	<u>After School</u> Girls rugby All years Miss Fozzard and Miss Morris Flag Football Mr Jones/ Mr Lawton	<u>After School</u> Pickleball Miss Dubocquet

3:10pm - 4:10pm

Clubs and fixtures are subject to staff availability and change.

We aim to update parents/carers using our social media channels as changes arrive, students are also verbally told during the school day.