



Student Bulletin



Calendar Events

Monday	Tuesday	Wednesday	Thursday	Friday
Week 2	Year 10 Apprenticeship Taster Days: Engineering			
Bike Week				
Year 11 Exams	Year 11 Exams	Year 11 Exams	Year 11 Exams	Year 11 Exams

Week Commencing 08/06/26

8/6 – 12/6 – BIKE WEEK: an annual celebration of cycling discover the freedom, health benefits, and eco-friendly nature of this sustainable mode of transportation. Why not try riding your bike to school? 🚲

8/6 – 12/6 – CARERS WEEK: dedicated to recognising and celebrating the vital role played by unpaid carers across the UK

Monday 8th – WORLD OCEANS DAY: celebrating the ocean and raising awareness of the crucial role of conservation.

Thursday 11th – WORLD CUP BEGINS: The start of the 23rd FIFA World Cup. Who will you be supporting? 🌐

Friday 12th – WORLD DAY AGAINST CHILD LABOUR: highlighting the plight of children across the world who are forced to work.

Sports Fixtures

DATE	SPORT	RETURN	LOCATION
MON	Primary Rounders Competition	14:30	HOME
MON	County Athletics @ Oakengates	18:30	AWAY
TUES	Leaders for Inclusive Football Event @ St Georges	12:00	AWAY
TUES	INCOMM	14:30	AWAY
THURS	U15 Girls Cricket @ Frankwell	14:30	AWAY
THURS	Year 7 Rounders @ Madeley	17:30	AWAY
FRI	Future Leaders @ Shrewsbury School	14:30	AWAY

Reminders and Assembly Rota

Please remember to follow the one way system around school

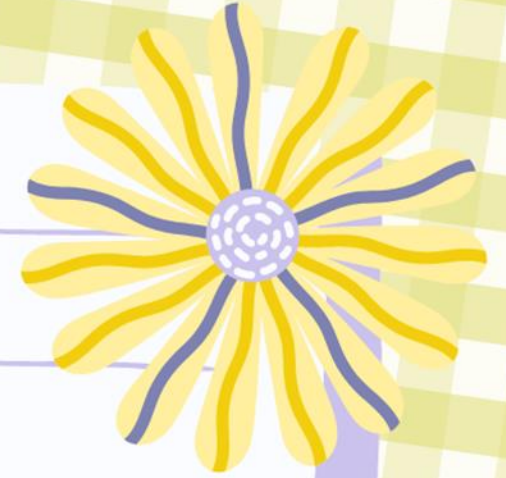
Face to Face or Virtual

MON	Year 7	MHST	
TUES			
WED	Year 8	MHST	
THURS	Year 9	MHST	
FRI			

This week is:



Timetable



Week 2



Classroom Entry & Exit Routines

How we enter a classroom:



Get to your class as quickly as possible.



Go straight into your classroom.
Do not line up or wait outside.



Greet your teacher positively:
'Good morning, Sir. How are you, Miss?'



Teacher checks uniform as you enter.
Uniform concerns are logged.



Students enter quietly in a
calm and purposeful manner.



Sit down and get equipment out straight away.



Begin the starter task in silence.

How we leave a classroom:

Pack your equipment away
when the teacher tells you.



Stand behind your chair.



Check your uniform
(blazer is on and shirt is tucked in).



You will not be allowed to leave
until your uniform is perfect.



You will be dismissed table by table in an
organised, calm and timely manner.



Uniform Reminders

Uniform concern logs can be viewed by parents by accessing the My Child at School website/app:

<https://www.mychildatschool.com/MCAS/MCSParentLogin>. The website/app can also be used to track House Points, sanctions (including C1's, C2's, BRR and Homework Concerns), your child's academic progress and key messages regarding attendance and attitude to learning. We strongly advise you gain access to this and review it regularly to enable you to work alongside us from home.

Please see key reminders regarding proper uniform below to help you and your child ensure they are meeting the schools' expectations and are able to wear their uniform with pride:

Boys

- Blazer and year group tie
- Pale blue shirt (Years 7 - 10)
- White shirt (Year 11)
- Plain black trousers (not jeans)
- Black/grey socks
- Navy V-neck pullover with school crest (Optional to be worn under the blazer)
- Plain black shoes (No trainers or canvas shoes)

Girls

- Blazer and year group tie
- Pale blue shirt - Revere collar is not allowed (Years 7 - 10)
- White shirt - Revere collar is not allowed (Year 11)
- Black tailored trousers (not skinny trousers or leggings, straight leg only), or Black knee length pleated skirt.
- Black or white socks or black tights
- Plain black flat walking shoes – Max. heel height 4cms. Max Sole 2cms
- Navy V-neck pullover with school crest (Optional to be worn under the blazer)
- Muslim girls may wear a navy-blue hijab and a navy blue kameez, abaya or maxi skirt with black trousers. Students are expected to wear a tie and blazer with their kameez, abaya or maxi.

Students should not wear hoodies or sweatshirts under their blazers at any time, including breaks or lunchtimes.

Uniform Bank

Take what you need, give what you can.



- Do you need help obtaining uniform?
- Do you wish to swap any items of uniform that are in good condition but no longer fit?

We have uniform and PE Kit available for a voluntary donation

Please ask at Reception or email reception@charlton.uk.com

CHARLTON SCHOOL

*Providing an environment in which all students can succeed,
with learning at the heart of all we do.*

Please can you continue to send in any items of Uniform you no longer require, especially blazers, and if you would like to swap sizes, please pop in and ask for Mrs Kinsey or Miss Littleford, or visit Pastoral.



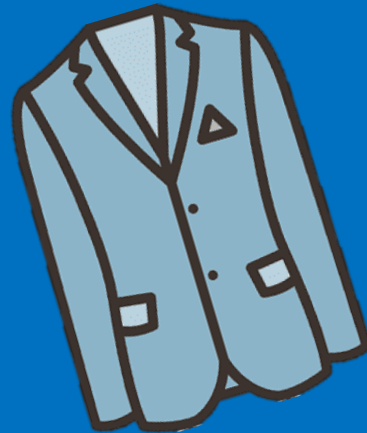
**** We are in need of shoes, trainers and PE Kit, as well as blazers and ties****

Please drop off any donations in reception.

Your contributions really do make a difference.

We are really grateful for your support,
Thankyou – Mrs Kinsey – Deputy DSL

THANK YOU!



Daily Equipment Check

Are you ready
To learn?

Stationery Shop
Available in the
Library

Scientific
Calculator

Pen

Pen

Red Pen

Pencil

Protractor

Ruler

Charlton School Uniform Guide 2025/26

Full Policy can be found at www.charlton.uk.com



Shirts, Ties
& Blazers



Uniform Guide
2025/26

Hoodies or Zip up Jackets should not
be worn instead of School blazers.



Skirt Length:
Knee length
pleated skirts only



Trousers:
Boys & Girls

No leggings, skinny or
tight trousers,
Straight leg only

Earrings:



Yes - Black leather style school
shoes

Footwear:

No - Sports trainers
(air bubbles or canvas)



★ Break & Lunch Time changes ★



YEAR 10	1 ST BREAK	2 ND LUNCH
YEAR 11	2 ND BREAK	1 ST LUNCH



Reminder!



Please can parents/carers make sure they name student clothes and bags.

When they are lost this makes it possible to find them again!



Our British Values

Democracy



Rule of Law



Mutual Respect



Individual Liberty



Tolerance



Democracy

Democracy can be seen as a state of society characterised by equality of rights and privileges. It can also refer to our nation's electoral systems.

Rule of Law

It is expected that while different people may hold different views about what is 'right' and 'wrong', all people living in England are subject to its law.

Mutual Respect

The proper regard for an individual's dignity, which is reciprocated.

Individual Liberty

Individual liberty suggests the free exercise of rights generally seen as outside Government control.

Tolerance

A fair, objective, and permissive attitude to those whose faith, religion and beliefs may differ from one's own.

RESPECT

RESILIENCE

RESPONSIBILITY





The Charlton Virtue in Focus is:

Respect

RESPECT

RESILIENCE

RESPONSIBILITY



CANTEEN LUNCH MENU

WEEK 2	MONDAY	TUESDAY	WEDNESDAY	THURSDAY	FRIDAY
OPTION 1	SWEET & SOUR VEGETABLES WITH POTATO WEDGES	BEEF LASAGNE WITH GARLIC BREAD AND SLAW	CHEF'S PIE OF THE DAY WITH NEW POTATOES	JERK CHICKEN WRAP WITH WEDGES & PINEAPPLE SLAW	CHIP SHOP FRIDAY SERVED WITH CHIPS, MUSHY PEAS AND GRAVY/CURRY SAUCE
OPTION 2	CRUNCHY VEGETABLE PASTA BAKE WITH GARLIC BREAD	VEGETABLE LASAGNE WITH GARLIC BREAD AND SLAW	LEEK, ONION & POTATO TRAY BAKE	CURRIED SQUASH & BUTTERBEAN STEW WITH RICE AND PEAS & SLAW	VEGETABLE BURGER WITH CHIPS
ON THE SIDE	VEGETABLES OF THE DAY	VEGETABLES OF THE DAY	VEGETABLES OF THE DAY	VEGETABLES OF THE DAY	VEGETABLES OF THE DAY
DESSERT OF THE DAY	SELECTION OF HOMEBAKES	SELECTION OF HOMEBAKES	HOT PUDDING & CUSTARD	HOT PUDDING & CUSTARD	SELECTION OF HOMEBAKES

ALSO AVAILABLE:
SOUP OF THE DAY
FILLED JACKET POTATOES

CHECK OUT...
OUR HOT AND COLD
GRAB & GO SECTION

ALLERGIES

PLEASE SPEAK TO A MEMBER OF STAFF IF YOU HAVE ANY
ALLERGY AND NEED TO KNOW WHAT'S INSIDE OUR FOOD
DISHERS, THEY WILL ADVISE YOU OF THE AVAILABLE CHOICES.

Look out for a purple lanyard



These are Charlton's main DSL's:

If you see a member of staff wearing a purple lanyard, this means they are a designated safeguarding lead.

They have had specific training for dealing with any safeguarding matters that you may have.

If you have any worries or concerns do not hesitate to go to them to report any safeguarding concerns or for help and advice.



LGBTQ+ Club would like to wish you all a

Accept people
for who they are!

BE YOURSELF!
BE PROUD!

HAPPY PRIDE MONTH

We all
belong
here!

Stay true
to yourself!



GOOD LUCK WITH
★ YOUR EXAMS ★

YEAR 11!

WE BELIEVE IN YOU!



Work hard, stay focused and believe in yourself.

Trust in your abilities and you'll go far.

Success comes from hard work and dedication!



Year 9!



**THERE IS A
MIXED ROUNDERS FIXTURE ON
WEDNESDAY 10TH JUNE**

AFTER SCHOOL!



**PLEASE CHECK THE
TEAM SHEETS IF
YOU USUALLY
ATTEND ROUNDERS
CLUB!!!**



A reminder that the
Red Box is available to
any students who need it!
Just ask for the Box at
Reception, Pastoral or the Media Hub!



COMPETITION TIME!

SPORTS DAY IS FAST APPROACHING!

WE ARE CHALLENGING ALL #TEAMBLUE TO

DESIGN A CERTIFICATE FOR STUDENTS TO RECEIVE ON SPORTS DAY!



**PRIZE FOR THE BEST
FORM GROUP WHO
SEND THE MOST
DESIGNS!!!**



**PRIZE FOR THE
STUDENT WHO
CREATES THE
WINNING DESIGN!!!**

THERE IS

SPORTS/ATHLETIC EVENTS!



DEADLINE 19TH JUNE 2026! ALL ENTRIES NEED TO BE HANDED IN TO MRS DAVIES IN THE NURTURE KITCHEN!



SUMMER STORY

 **COMPETITION!** 

SUBMIT YOUR OWN SHORT STORY ABOUT
THE PERFECT SUMMER HOLIDAY

FOR A CHANCE OF WINNING
1 OF 3 SWEET TREAT BUNDLES!

ALL ENTRIES MUST BE BETWEEN 50 - 300 WORDS LONG
AND MUST FIT THE THEME OF A SUMMER HOLIDAY!



CLOSING DATE: FRIDAY 26TH JUNE!

PLEASE SUBMIT YOUR ENTRY TO MISS WHITFORD IN THE LIBRARY!

JUST LIKE US!

Want to be a changemaker?

Join us for some online student leader training!

You will have the opportunity to connect with students in other LGBTQ+ groups across the UK and learn about how to make a difference in your school community!

**Tuesday 16th June, 3:10 - 4:10 (approx)
in MFL1.**

Places are limited - if you are interested, please speak to Mr Drugan ASAP!

**EMBRACE
WHO YOU ARE**

**PROUD
to be ME!**

SOS SAGAS

WANTED

CREATIVE WRITING COMPETITION FOR 11-18 YEAR-OLDS

WRITE YOUR OWN SHORT STORY FOR THE CHANCE

TO WIN:

£100 AMAZON GIFT CARD

AND A TROPHY!!!

YOUR STORY COULD ALSO BE PUBLISHED IN A YOUNGWRITERS BOOK, AVAILABLE IN THE LIBRARY!

FOR MORE INFORMATION, SEE MISS WHITFORD IN THE LIBRARY!

**100
WORD
LIMIT!!!**

**CLOSING
DATE:
13TH JULY!**

7pm Wednesday 17th June and 7pm Thursday 18 June 2026

THE
GIRL
FROM THE
SEA

Charlton Theatre Company

Adult £3 / Concessions £2

YEAR 7-11

Professional Cricket Match

Friday 26th June 2026 3:40pm - LATE

at Edgbaston Cricket Stadium

Birmingham Bears VS Worcestershire Rapids

T20 Vitality Blast

**First come,
first served
basis!!!
(40 spaces).**



Please collect a letters from Miss Fozzard in PE.

Payment to Mrs Hughes in Finance or on ParentPay.

GOT OVERDUE BOOKS?



**WE CURRENTLY HAVE OVER
100 OVERDUE LIBRARY BOOKS!**

**IF YOUR BOOKS ARE NOT RETURNED,
YOU MAY BE UNABLE TO
LOAN ANY MORE BOOKS
FROM THE LIBRARY!**



**IF YOU ARE UNABLE TO RETURN YOUR BOOKS,
PLEASE SEE MISS WHITFORD IN THE LIBRARY AS SOON AS POSSIBLE.**



Year 8!



**ATHLETICS
WEDNESDAY**



**PLEASE CHECK THE
PE NOTICE BOARD FOR
TEAM SHEETS FOR THIS
WEEKS SPORT
FIXTURES!!!**


**Rounders
Thursday**

Sparx Reader

YEAR 7



1) Jacob K (Jacob the Strategist) 1,208



2) Nate B (Nate the Legend) 1,157



3) Kiegan B (Kiegan the Sunbeam) 826

Sparx Reader

YEAR 8



1) Catherine A (Catherine the Marvel) 5,150



2) Coen P (Coen the Innovator) 2,372



3) Alexander A (Alexander the Pilot) 667

Sparx Reader

YEAR 9



1) Jonah H (Jonah the Original) 564



2) Lucy W (Lucy the Orator) 558



3) Inayah S (Inayah the Professional) 546

Sparx Reader

YEAR 10



1) Alfie P (Alfie the All-Star) 369



2) Oanker G (Oanker the Pathfinder) 348



3) Helena F (Helena the Icon) 336

Sparx Reader

TERM CHAMPIONS!

WELL
DONE

- 1) Catherine A (Catherine the Marvel) 92,851
- 2) Jacob K (Jacob the Strategist) 76,793
- 3) Alicia E (Alicia the Genius) 38,671
- 4) Qais S (Qais the Leader) 35,766
- 5) Jessica T (Jessica the Bee's Knees) 33,154
- 6) Abdullah C (Abdullah the Nemesis) 26,871
- 7) Elsie J (Elsie the Starfire) 26,308
- 8) Nobrianna B (Nobrianna the Rebel) 25,757
- 9) Barbara G (Barbara the Majesty) 25,460
- 10) Izzy B (Izzy the Infinity) 23,344

GOOD
WORK!

Sparx Maths

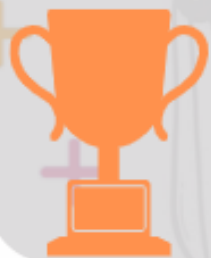
YEAR 7



1) Alishba K (Alishba the Ambassador) 1,555



2) Jacob K (Jacob the Strategist) 1,330



3) Ivana A (Ivana the Legend) 1,310

Sparx Maths

YEAR 8



1)

Megan A (Megan the Icon) 3,321



2)

Alexander A (Alexander the Pilot) 3,021



3)

Catherine A (Catherine the Marvel) 1,675

Sparx Maths

YEAR 9



1)

Syd G (Syd the Infinity) 595



2)

Hamzeh K (Hamzeh the Leader) 555



3)

Jonah H (Jonah the Original) 555

Sparx Maths

YEAR 10



1) Oanker G (Oanker the Pathfinder) 425



2) Grace W (Grace the Comet) 350



3) Thomas S (Thomas the Intelligent) 219

Sparx Science

YEAR 7



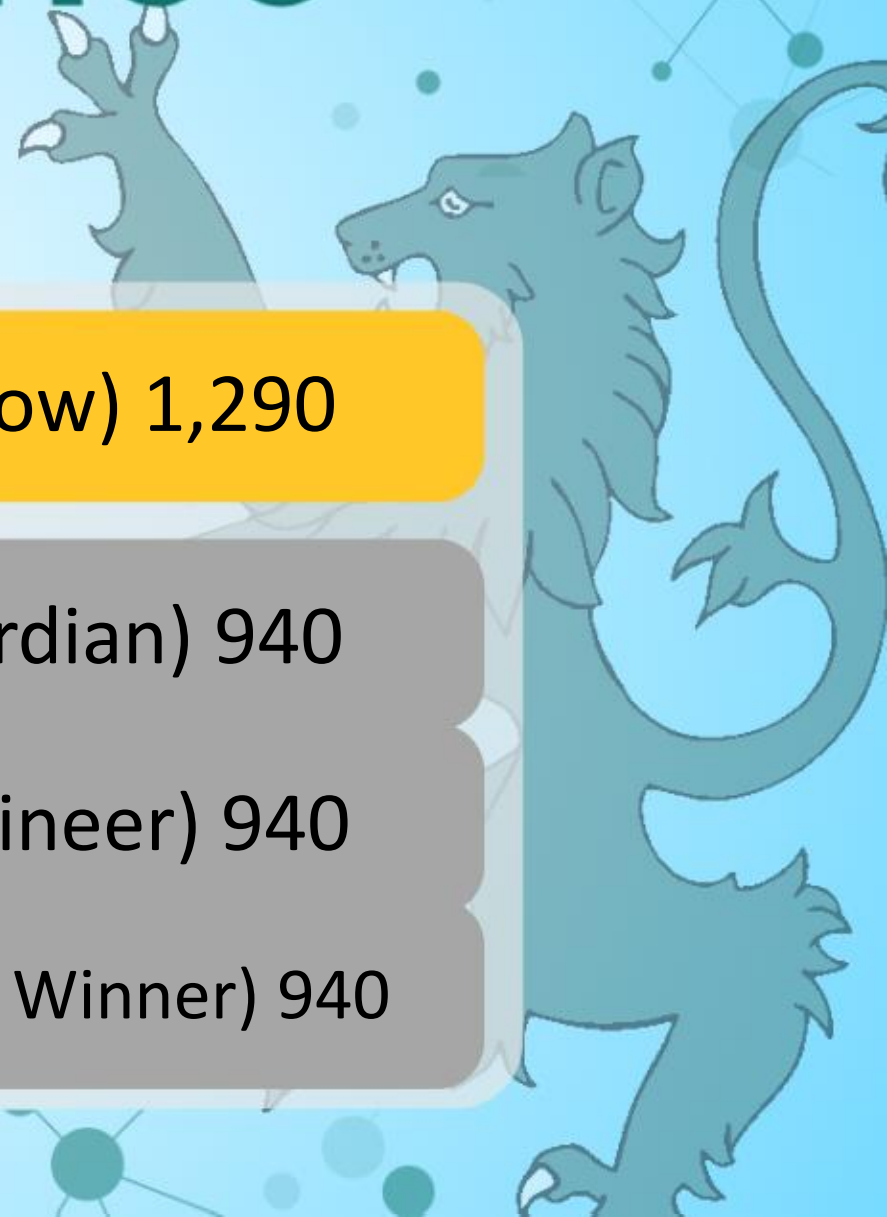
1) Freya R (Freya the Shadow) 1,290



2) Rayan F (Rayan the Guardian) 940

2) Henry G (Henry the Engineer) 940

2) Bella-Rose M (Bella-Rose the Winner) 940



Sparx Science

YEAR 8



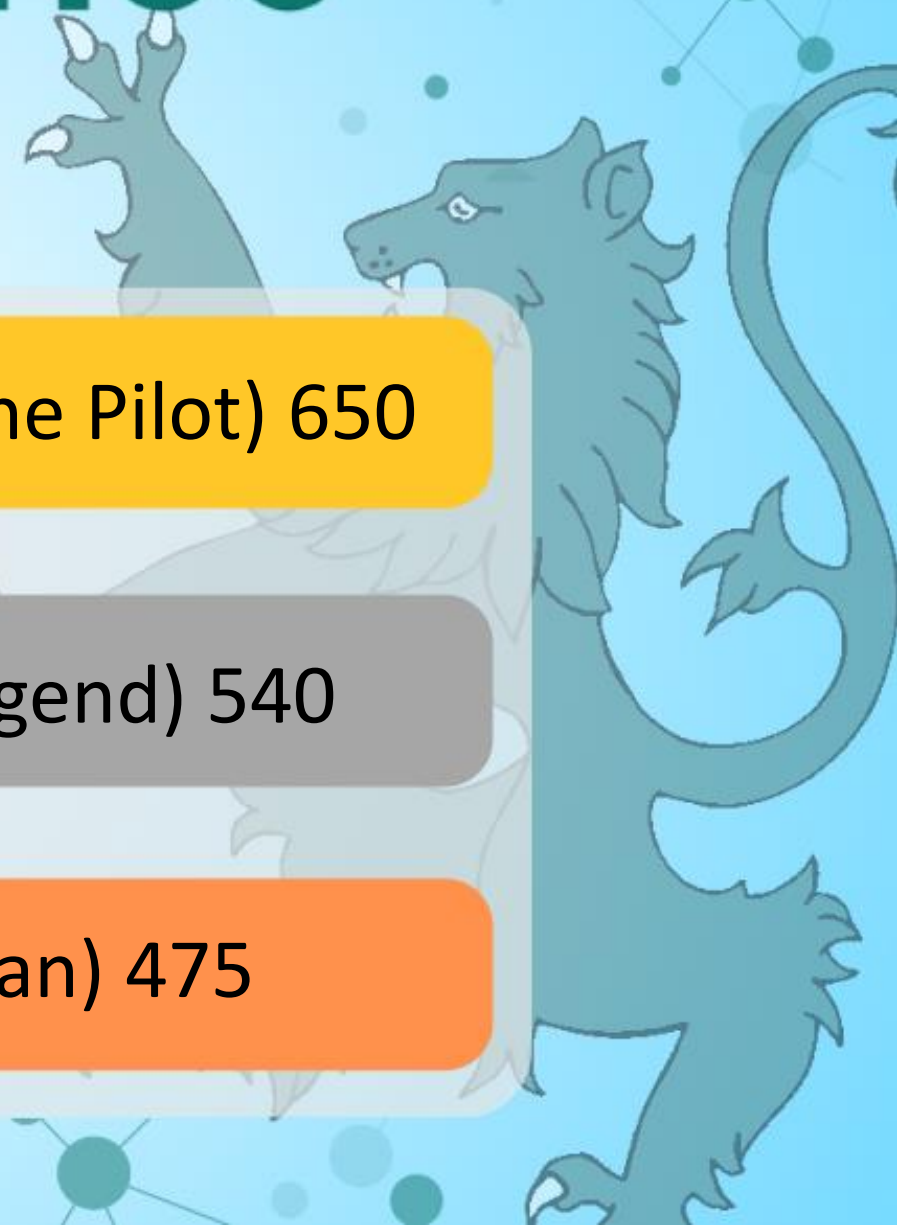
1) Alexander A (Alexander the Pilot) 650



2) Sophie C (Sophie the Legend) 540



3) Ian C (Ian the Musician) 475



Sparx Science

YEAR 9



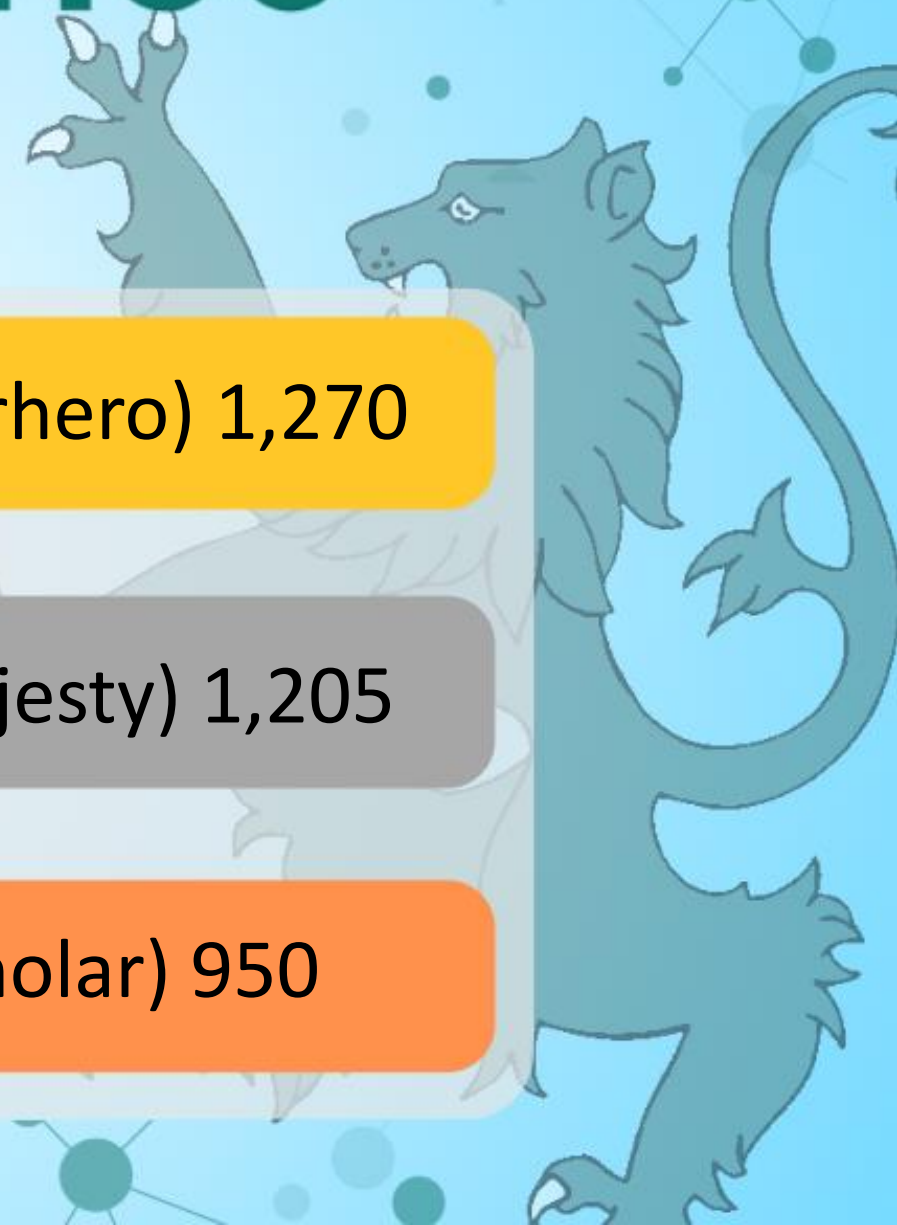
1) Amna H (Amna the Superhero) 1,270



2) Indeev W (Indeev the Majesty) 1,205



3) Emily M (Emily the Scholar) 950



Sparx Science

YEAR 10



1)

Aiza K (Aiza the Sentinal) 1,410



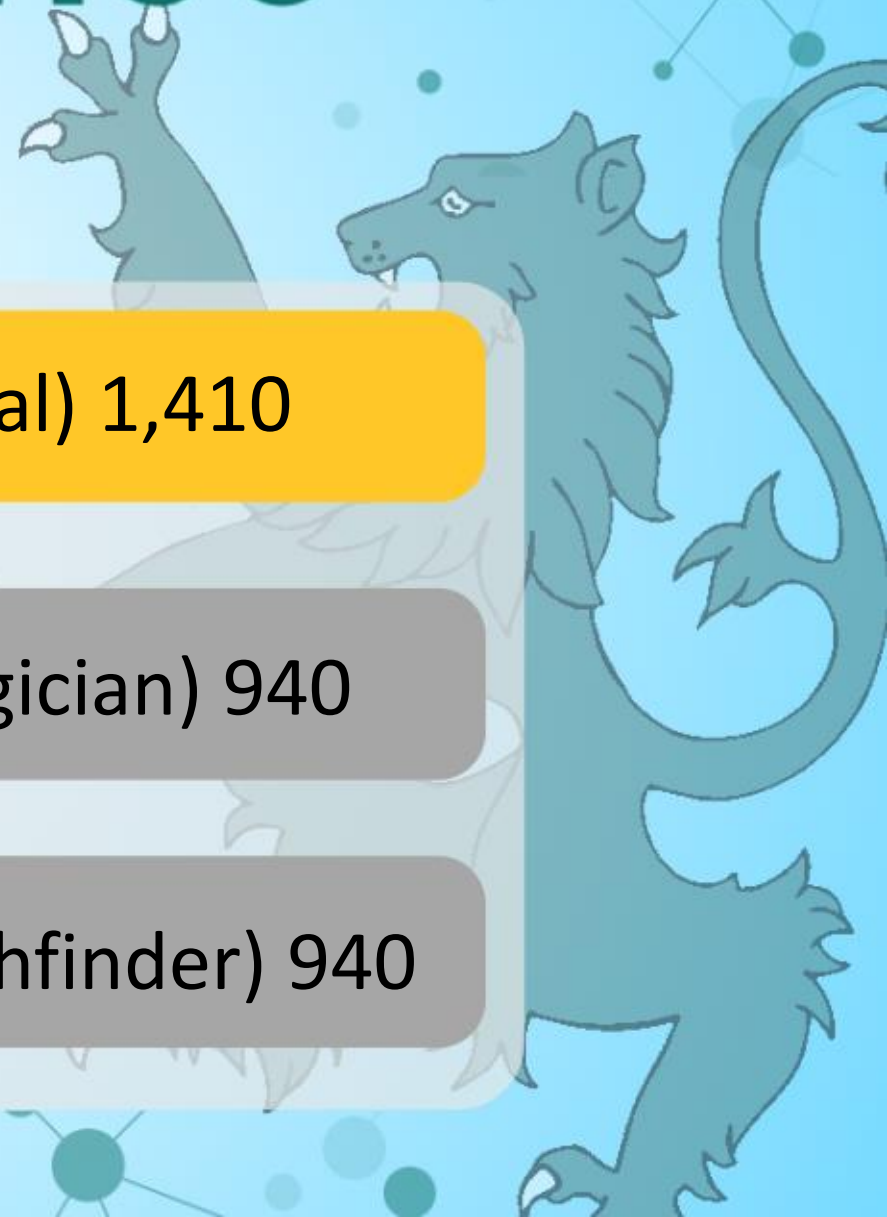
2)

Alyssa W (Alyssa the Magician) 940



2)

Oanker G (Oanker the Pathfinder) 940



Sparx Science

YEAR 11



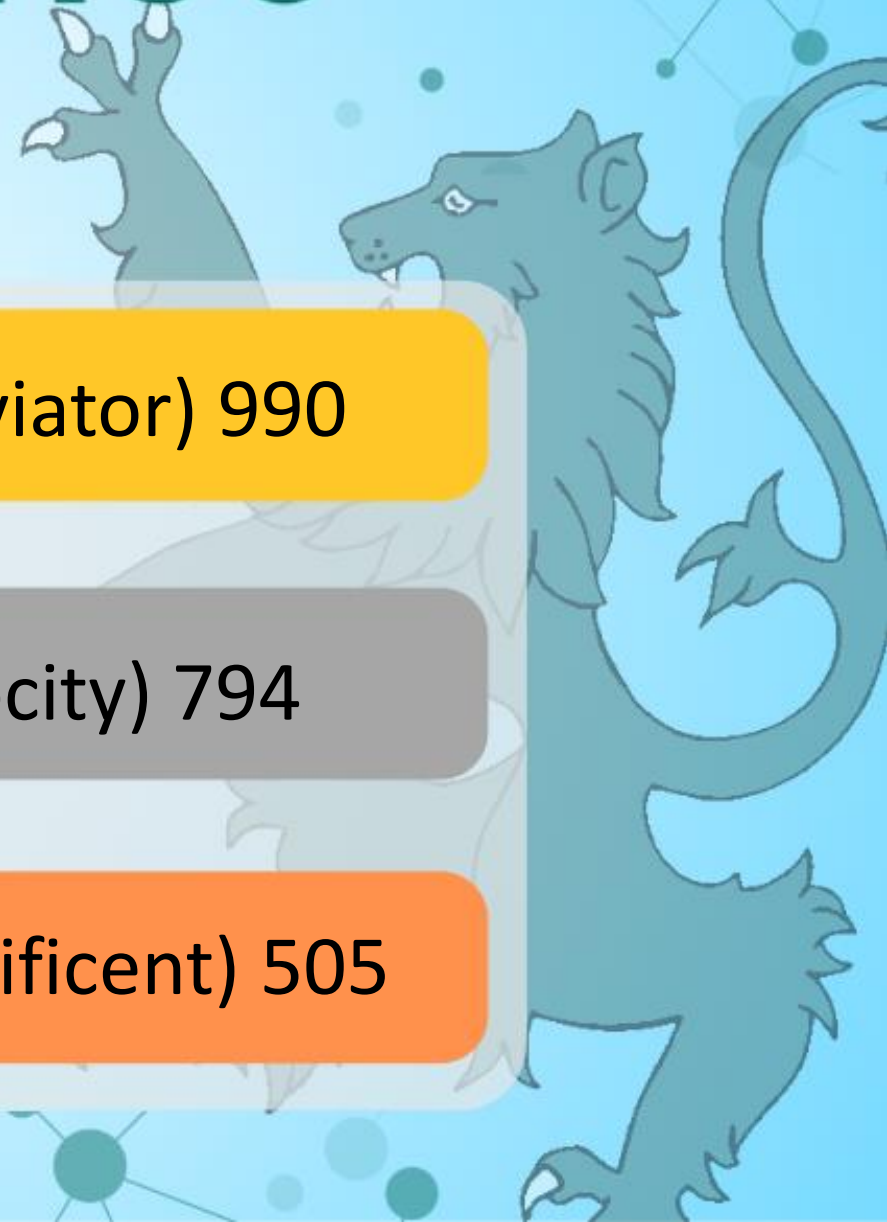
1) Amelia G (Amelia the Aviator) 990



2) Verity S (Verity the Velocity) 794



3) Mena C (Mena the Magnificent) 505



Inclusion Team Shoutouts!

Year 7

Jack A

Jake N

Florence P

Year 8

Alex C

Oliver H

Harry V

Harry W

Year 9

Year 10

Year 11

Lucy A

Rhi G

Max N-X

**All Year 11's
for working
so hard
towards
their exams!**

SCHOOL NURSE DROP IN

MONDAYS 12 - 3PM

WHAT WE CAN OFFER YOU:

- A SCHOOL NURSE WILL ATTEND YOUR SCHOOL WEEKLY FOR HEALTH DROP-IN SESSIONS. THESE ARE CONFIDENTIAL, PROVIDING ADVICE, SUPPORT, AND SIGNPOSTING FOR PHYSICAL AND EMOTIONAL HEALTH.
- A SCHOOL NURSE CAN PROVIDE YOU WITH A C-CARD FOR FREE CONDOMS, SEXUAL HEALTH ADVICE AND SUPPORT.
- OUR EMOTIONAL HEALTH AND WELLBEING LEAD NURSE ALSO RUNS A CLINIC FOR PARENTS EVERY **TUESDAY (9-2PM)** AT SUTTON HILL MEDICAL PRACTICE
(ONLINE APPOINTMENTS ALSO AVAILABLE UPON REQUEST ON **0333 358 3328**)
- YOUNG PEOPLE CAN CALL THE HEALTH FOR TEENS LINE TO CONFIDENTIALLY SEEK SUPPORT
(**07520619051**)
- ASK YOUR SCHOOL TO REFER IN OR SELF-REFER BY CALLING US ON **0333 358 3328**

HEALTH FOR TEENS

NHS
Shropshire Community Health
NHS Trust



YOUNGmINDS **kooth**

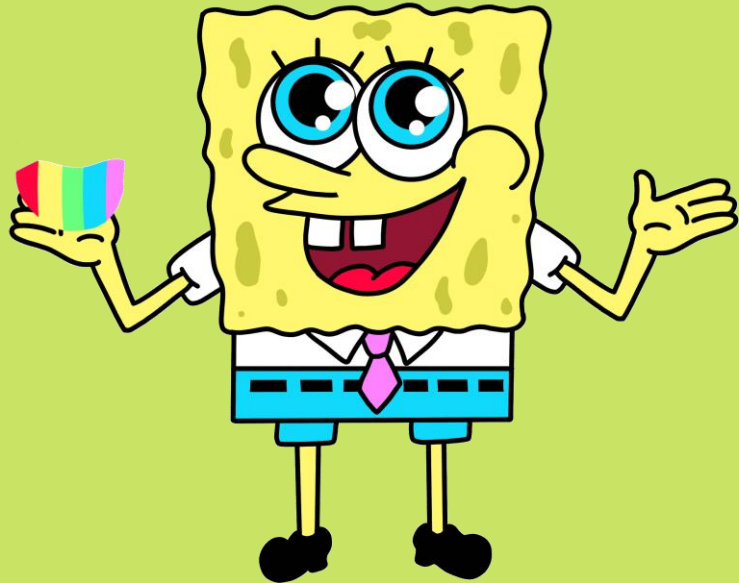


HURRAH!



TOP ATTENDANCE

TOTAL



SINCE THE START OF TERM

97.06%

TUTOR GROUPS

8.6





House Activities

HOUSE	POINTS
Birch	126,984
Willow	133,831
Hawthorn	127,706
Sycamore	115,330

House	Weekly Points
Willow	2,336
Sycamore	2,028
Birch	1,492
Hawthorn	1,757

Top house this week:
Willow



Cumulative Tutor Points so far this term:

7-01	8,244
7-02	7,423
7-03	16,530
7-04	12,987
7-05	7,320
7-06	16,016
7-07	10,237
7-08	9,261
7-09	15,227

8-01	7,985
8-02	11,636
8-03	10,775
8-04	8,743
8-05	9,284
8-06	10,920
8-07	11,796
8-08	9,196
8-09	8,607

9-01	6,799
9-02	6,793
9-03	7,293
9-04	11,744
9-05	7,956
9-06	5,891
9-07	5,280
9-08	9,752
9-09	5,540

10-01	4,846
10-02	7,595
10-03	3,896
10-04	8,534
10-05	8,022
10-06	7,370
10-07	15,059
10-08	5,259
10-09	5,871

11-01	4,761
11-02	5,102
11-03	5,911
11-04	3,616
11-05	4,639
11-06	4,237
11-07	7,433
11-08	4,430
11-09	5,503



Top Tutor Group for each House



8.2



7.3



7.6



7.9

STUDENTS WILL NOW NEED A

LIBRARY CARD

**TO ACCESS THE LIBRARY
AT BREAK/LUNCH TIMES!**



**Want to apply for a card?
Please see Miss Whitford!**

**DO YOU HAVE ANY
OLD SMALL OR BROKEN
PLASTIC TOYS
YOU NO LONGER WANT?**



PLEASE BRING
THEM TO
AR1



**YOUR DONATIONS
WILL BE USED
BY YEAR II'S
TO CREATE
FANTASTIC PIECES
OF ART!**



DONATIONS NEEDED!

ART/TEXTILES ARE LOOKING FOR THE FOLLOWING ITEMS:

RECORDS

CDS

CASSETTE TAPES

ROAD MAPS

OS MAPS

PLEASE BRING ANY DONATIONS TO THE ART/TEXTILES ROOMS!



FOLLOW OUR INSTAGRAM ACCOUNTS TO SEE THE WONDERFUL WORK
CREATED BY THE TALENTED STUDENTS HERE AT CHARLTON!

Follow



@CHARLTONSCHOOLGEO

@CHARLTONSCHOOLEXPRESSIVEARTS

@CHARLTONSCHOOLMEDIA

@CHARLTONSCHOOLPE

@CHARLTONSCHOOLART

@CHARLTONSCHOOLREVISION

@CHARLTONCAREERS



CREATIVE CRAFT CLUB

FRIDAYS IN TC4

3:10 - 4:10PM

**SIGN SHEETS BY
TC4. PLACES ARE
LIMITED!!!**

**STUDENTS MUST SIGN
UP BY THE WEDNESDAY
IN ORDER TO JOIN IN!**

WOMEN'S Empowerment Group

**EVERY MONDAY
DURING FORM
(8:55 - 9:15)**

**SESSIONS ARE
FUN,
INTERACTIVE
AND
INFORMATIVE!**

**(REMEMBER TO
GET YOUR
REGISTRATION
MARK FIRST
BEFORE COMING
TO CLUB!)**

MU1

EVERYONE WELCOME!



Textiles Club

3 sessions of TIE DYE

Monday 8th, 15th & 22nd June in AR2

**Bring a white item of clothing,
tote bag or item of choice to dye
(NOT TOO BIG)**

SIGN UP SHEET OUTSIDE AR2

A new sheet will be added weekly





Join us for

Sparx Science



Cricket Club

Two cricket bats and two red cricket balls are positioned on either side of the main title.

THURSDAYS

3:10 - 4:10PM

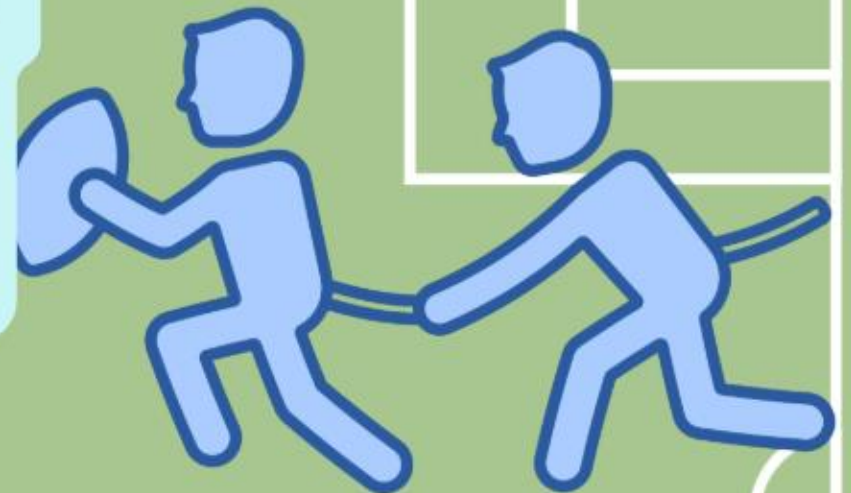
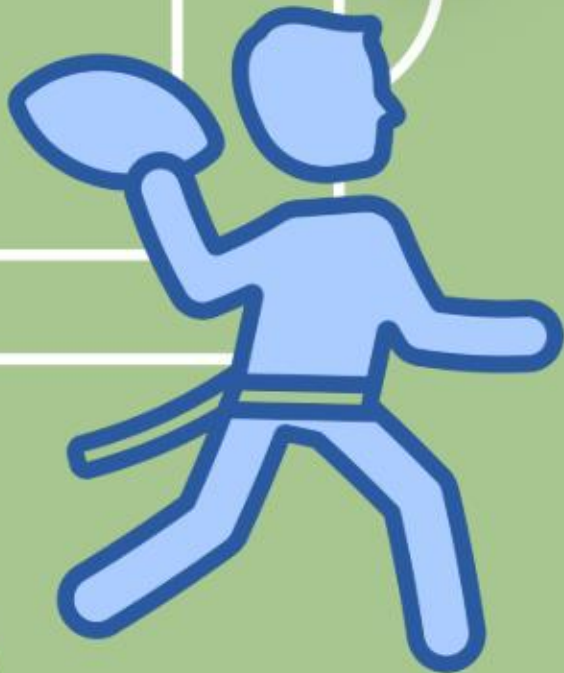
ALL AGES AND GENDERS WELCOME!



FLAG FOOTBALL



**MONDAYS
AFTER SCHOOL
3:10 - 4:10PM
WITH MR JONES**





LGBTQ+ CLUB



★ THURSDAYS WEEK 1: 15.10-16.10
IN MISS SAVAGE'S ROOM

★ FRIDAYS WEEK 2: FORM TIME 8.30 - 9.15
IN THE DRAMA STUDIO

HEAD STRAIGHT TO CLUB,
WE CAN REGISTER YOU THERE! 😊

ANY QUESTIONS PLEASE SPEAK TO MR DRUGAN (MFL1)





CHARLTON SCHOOL TECHNOLOGY DEPARTMENT INVITES YOU TO:

CATERING CLUB FOR YEAR 9

TC7 EVERY WEDNESDAY
FROM 3.10-4.10

THIS CLUB IS TO A COOKING CLUB WHERE YOU WILL
MAKE A RANGE OF SWEET AND SAVOURY ITEMS.

SIGN UP SHEET WILL GO UP OUTSIDE TC7 ON
THURSDAYS THE WEEK BEFORE- MUST SIGN UP AS
PLACES ARE LIMITED.

Pickleball Club

Fridays Week 1

with Miss Dubocquet



Dance Company Rehearsals

Every Wednesday after
school in the Main Hall

3:10-4:10PM

CHOIR!

Wednesdays
3:10-4:10pm





KS3 Dance Club

Tuesdays
3:10-4:10pm





HOMework CLUB!

CANCELLED TUESDAY

**Wednesday after school
in NU4!**



SOCIAL CLUB!

Every Thursday
in NU4

INVITE
ONLY!



STREET DANCE WITH KAYDON



EVERY MONDAY
AFTER SCHOOL!
IN DR1 3:10-4:10



COMING SOON



Charlton
Book Awards

A yellow starburst graphic with a blue scalloped border. It features three books: a red one on the left, a purple one at the top, and a blue one at the bottom.



COMMONWEALTH
GAMES
2026

A blue starburst graphic with a pink and purple scalloped border. It features an icon of a person lifting weights and an illustration of a person in a wheelchair holding a basketball.



CHARLTONBURY
2026

An orange starburst graphic with a blue scalloped border. It features a person playing a guitar, a group of people dancing, musical notes, and a colorful fairground scene with a ticket booth and a Ferris wheel.

After Lunch / School - Extra Curricular Activities

Club / Activity / Term	Day and Times	Location	Available to the following year groups					Additional Information
			7	8	9	10	11	e.g. equipment needed etc.
Stem Club	Monday 3:10pm to 4:10pm	SC7	✓	✓				This club is invite only.
Bridge Homework Club	Tuesday & Wednesday	NU4	✓	✓	✓	✓	✓	
Library Access	Monday to Thursday 3:10pm	Library	✓	✓	✓	✓	✓	
Diversity LGBTQ+ CLUB	Thursday Week 1 3:10pm to 4:10pm	Thur - MA5 Fri - MFL1	✓	✓	✓	✓	✓	
D of E - Mrs Bird	Monday 3:10pm to 4:10pm	Main Hall			✓			Usually from Feb to July. Please see Mrs Bird
Bridge Social Club	Wednesday & Thursday	NU4	✓	✓	✓	✓	✓	By invitation only
MFL Club	Thursday 3:10pm to 4:10pm	MFL5	✓	✓	✓	✓	✓	
Creative Craft - Mrs Turner	Fridays 3:10pm to 4:10pm	TC4	✓	✓	✓	✓	✓	This club will be starting 19th September
Strategy Games Club &	Tuesday 3:10pm to 4:10pm	PE1	✓	✓	✓	✓	✓	You can bring your own cards if you wish.
Dungeon and Dragons Club	Monday 3:10 - 4:10pm	EN7	✓	✓	✓	✓	✓	
KS3 Art Club	Tuesday 3:10 - 4:10pm	AR1	✓	✓	✓			
KS4 Art Club	Thursday 3:10 - 4:10pm	AR1				✓	✓	
Catering Club	Wednesday 3:10pm - 4:10pm	TC7			✓			Limited Places
Year 11 Study Zone	Everyday 3:10 - 4:10pm	TBC					✓	
Maths Homework Club	Wednesday 3:10 - 4:10pm	MA7	✓	✓	✓	✓	✓	
UNICEF Project	Tuesday 3:10 - 4:10pm	HU5			✓	✓	✓	Invite only

3:10pm - 4:10pm

Clubs and fixtures are subject to staff availability and change.

We aim to update parents/carers using our social media channels as changes arrive, students are also verbally told during the school day.

Expressive Arts - Extra Curricular Activities

	ART	DRAMA	DANCE	MUSIC
MONDAY	<p>School Show Principal Rehearsals Monday rehearsals will need to be attended by anyone who has a principal role in the school production. If you are unsure whether this applies to you, please check with one of the Expressive Arts teachers. Time: 3:10-4:10 Location: Main Hall/DR1 Teacher: Expressive Arts Department</p>		<p>Street Dance - TBC Entry by audition, open to all if you have an interest to Dance come along and audition. Led by professional Street Dance choreographer and Dancer Abbie. Time: 3:10-4:10 Location: DR1/MU1 Teacher: Abbie</p>	
TUESDAY	<p>Charlton Art Club Open to any KS3 students with an interest in Art. Led by our talented Arts Ambassadors. Time: 3:10-4:10 Location: AR1 Teacher: Arts Ambassadors</p>		<p>KS3 Dance Club Open to any KS3 students with an interest in dance. Led by our talented Arts Ambassadors. Time: 3:10-4:10 Location: Main Hall Teacher: Arts Ambassadors</p>	<p>Rock School Bring you guitar, drumsticks or voice and be part of a rock band. Welcome to all levels and abilities but limited places are available – please speak to Mrs Crampsie if interested. Time: 3:10-4:10</p>
WEDNESDAY			<p>Dance Company For students with an interest in dance. It will be by invitation only and auditions. Time: 3:10-4:10 Location: Main Hall Teacher: Mrs Wellings</p>	<p>Charlton Choir Open to all year groups and abilities – singing is proven to help with stress, confidence, improve memory and allows you to express yourself and build a sense of community. I hope to see you there! Time: Location: 3:10-4:10 MU1 Teacher: Mr Allen</p>
THURSDAY		<p>School Show – Full Cast Rehearsals Rehearsals will need to be attended by everyone who is in the show, including the backstage and technical teams – set and costume designers must attend the meeting in AR1. Speak to Mrs Crampsie if you would like to take part in the</p>		
FRIDAY				

3:10pm - 4:10pm

Clubs and fixtures are subject to staff availability and change.

We aim to update parents/carers using our social media channels as changes arrive, students are also verbally told during the school day.

PE - Extra Curricular Activities

	MAIN HALL / FITNESS SUITE	SPORTS HALL	FIELD	TENNIS COURTS
MONDAY	After School Cambridge National / GCSE- catch up – PE1	After School Out of use due to exams	After School Rounders Ms Byrne	After school
TUESDAY	Staff Meetings After School	Staff Meetings After School Out of use due to exams	Staff Meetings After School	Staff Meetings After School
WEDNESDAY	After school Out of use due to exams	After School Out of use due to exams	After School Rounders Y7-10 Ms Byrne Athletics Miss Johnson Cricket Miss Fozzard All Years Athletics fixtures	After School
THURSDAY	After School Out of use due to exams	After School Out of use due to exams	After School Rounders Fixtures	After School Futsal Mr Hughes
FRIDAY	After School Out of use due to exams	After School Out of use due to exams	After School Girls rugby All years Miss Fozzard and Miss Morris Flag Football Mr Jones/ Mr Lawton	After School Pickleball Miss Dubocquet

3:10pm - 4:10pm

Clubs and fixtures are subject to staff availability and change.

We aim to update parents/carers using our social media channels as changes arrive, students are also verbally told during the school day.