



Student Bulletin



Calendar Events

Monday	Tuesday	Wednesday	Thursday	Friday
<u>Week 2</u>	Blue Skies RAF Cosford 09:00 – 14:30 Pathways Evening Main Hall 17:00 – 19:00.	Y7 PGL Trip	Y7 PGL Trip Y9 Blue Skies RAF Shawbury 09:00 – 14:30	Y7 PGL Trip

Sports Fixtures

DATE	SPORT	RETURN	LOCATION
MON	U15 Girls County Cup VS Bishops Castle BYC	17:15	AWAY
MON	U14 County Cup VS Ercall Wood	17:00	AWAY
MON	U16 Dynamic Cup VS Shrewsbury School	17:30	AWAY
TUES	Grinshill Arthog	12:30	AWAY
WED	Y8/9 Girls Rugby Development @ Newport RFC	17:00	AWAY
WED	Y11 Football Fixture VS Telford Park	16:30	HOME
THURS	Leaders – Y3/4 Cricket Event BYC	14:30	AWAY
FRI	U16 Dynamik Cup – Basketball VS Twycross School	18:00	AWAY

Week Commencing 10/11/25

Monday 10th – 14th : Anti-Bullying Week

Use your Power for Good to safely speak up and raise awareness when you see bullying, face to face or online.

Tuesday 11th : Remembrance Day

A **2-minute silence** will be held at **11am** to remember those who bravely fought during Wars.

Thursday 13th : World Kindness Day

World Kindness Day 2025 celebrates acts of kindness across the Globe.

Why not perform your own act of kindness today?

Friday 14th : Odd Socks Day

Wear your oddest socks proudly, to celebrate that differences makes each of us unique and are something to be celebrated, not bullied!

Reminders and Assembly Rota

Please remember
to follow the
one way system
around school

Face to Face or Virtual

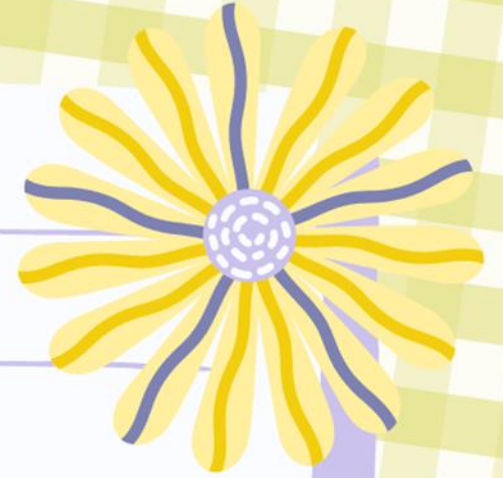
Mon	Year 7	BIA	Face to Face
Tues	Year 8	BIA	Face to Face
	All Years Remembrance Assembly – 11am		Virtual
Wed	5	BIA	Face to Face
Thur	Year 10	BIA	Face to Face
Fri	Year 11	BIA	Face to Face

This week is:



Timetable

Week 2



Classroom Entry & Exit Routines

How we enter a classroom:



Get to your class as quickly as possible.



Go straight into your classroom.
Do not line up or wait outside.



Greet your teacher positively:
'Good morning, Sir. How are you, Miss?'



Teacher checks uniform as you enter.
Uniform concerns are logged.



Students enter quietly in a
calm and purposeful manner.



Sit down and get equipment out straight away.



Begin the starter task in silence.

How we leave a classroom:

Pack your equipment away
when the teacher tells you.



Stand behind your chair.



Check your uniform
(blazer is on and shirt is tucked in).



You will not be allowed to leave
until your uniform is perfect.



You will be dismissed table by table in an
organised, calm and timely manner.



Uniform Reminders

Uniform concern logs can be viewed by parents by accessing the My Child at School website/app:

<https://www.mychildatschool.com/MCAS/MCSParentLogin>. The website/app can also be used to track House Points, sanctions (including C1's, C2's, BRR and Homework Concerns), your child's academic progress and key messages regarding attendance and attitude to learning. We strongly advise you gain access to this and review it regularly to enable you to work alongside us from home.

Please see key reminders regarding proper uniform below to help you and your child ensure they are meeting the schools' expectations and are able to wear their uniform with pride:

Boys

- Blazer and year group tie
- Pale blue shirt (Years 7 - 10)
- White shirt (Year 11)
- Plain black trousers (not jeans)
- Black/grey socks
- Navy V-neck pullover with school crest (Optional to be worn under the blazer)
- Plain black shoes (No trainers or canvas shoes)

Girls

- Blazer and year group tie
- Pale blue shirt - Revere collar is not allowed (Years 7 - 10)
- White shirt - Revere collar is not allowed (Year 11)
- Black tailored trousers (not skinny trousers or leggings, straight leg only), or Black knee length pleated skirt.
- Black or white socks or black tights
- Plain black flat walking shoes – Max. heel height 4cms. Max Sole 2cms
- Navy V-neck pullover with school crest (Optional to be worn under the blazer)
- Muslim girls may wear a navy-blue hijab and a navy blue kameez, abaya or maxi skirt with black trousers. Students are expected to wear a tie and blazer with their kameez, abaya or maxi.

Students should not wear hoodies or sweatshirts under their blazers at any time, including breaks or lunchtimes.

Uniform Bank

Take what you need, give what you can.



- Do you need help obtaining uniform?
- Do you wish to swap any items of uniform that are in good condition but no longer fit?

We have uniform and PE Kit available for a voluntary donation

**Please ask at Reception or email
reception@charlton.uk.com**

CHARLTON SCHOOL

*Providing an environment in which all students can succeed,
with learning at the heart of all we do.*

Please can you continue to send in any items of Uniform you no longer require, especially blazers, and if you would like to swap sizes, please pop in and ask for Mrs Kinsey or Miss Littleford, or visit Pastoral.



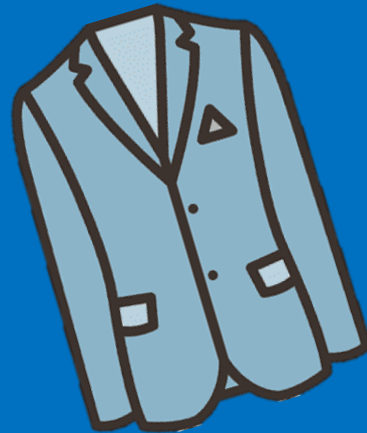
**** We are in need of shoes, trainers and PE Kit, as well as blazers and ties****

Please drop off any donations in reception.

Your contributions really do make a difference.

We are really grateful for your support,
Thankyou – Mrs Kinsey – Deputy DSL

THANK YOU!



Reminder!



Please can parents/carers make sure
they name student clothes and bags.
When they are lost this makes it
possible to find them again!



Our British Values

Democracy



Rule of Law



Mutual Respect



Individual Liberty



Tolerance



Democracy

Democracy can be seen as a state of society characterised by equality of rights and privileges. It can also refer to our nation's electoral systems.

Rule of Law

It is expected that while different people may hold different views about what is 'right' and 'wrong', all people living in England are subject to its law.

Mutual Respect

The proper regard for an individual's dignity, which is reciprocated.

Individual Liberty

Individual liberty suggests the free exercise of rights generally seen as outside Government control.

Tolerance

A fair, objective, and permissive attitude to those whose faith, religion and beliefs may differ from one's own.

RESPECT

RESILIENCE

RESPONSIBILITY





The Charlton Virtue in Focus is:

Compassion

RESPECT

RESILIENCE

RESPONSIBILITY



Remembrance Day

Remembrance Day honours those who served to defend our democratic freedoms and way of life.

On the 11th November, at 11am, there will be an Assembly, followed by a 2 minute silence.

This is held to remember those who've died in War.
It is also known as Armistice Day.

“Honour those who laid down their lives so that you may live free”

Break Time changes



Year 10 - 1st Break

Year 11 - 2nd Break



CANTEEN LUNCH MENU

WEEK 2	MONDAY	TUESDAY	WEDNESDAY	THURSDAY	FRIDAY
OPTION 1	SWEET & SOUR VEGETABLES WITH POTATO WEDGES	BEEF LASAGNE WITH GARLIC BREAD AND SLAW	CHEF'S PIE OF THE DAY WITH NEW POTATOES	JERK CHICKEN WRAP WITH WEDGES & PINEAPPLE SLAW	CHIP SHOP FRIDAY SERVED WITH CHIPS, MUSHY PEAS AND GRAVY/CURRY SAUCE
OPTION 2	CRUNCHY VEGETABLE PASTA BAKE WITH GARLIC BREAD	VEGETABLE LASAGNE WITH GARLIC BREAD AND SLAW	LEEK, ONION & POTATO TRAY BAKE	CURRIED SQUASH & BUTTERBEAN STEW WITH RICE AND PEAS & SLAW	VEGETABLE BURGER WITH CHIPS
ON THE SIDE	VEGETABLES OF THE DAY	VEGETABLES OF THE DAY	VEGETABLES OF THE DAY	VEGETABLES OF THE DAY	VEGETABLES OF THE DAY
DESSERT OF THE DAY	SELECTION OF HOMEBAKES	SELECTION OF HOMEBAKES	HOT PUDDING & CUSTARD	HOT PUDDING & CUSTARD	SELECTION OF HOMEBAKES

ALSO AVAILABLE:
SOUP OF THE DAY
FILLED JACKET POTATOES

CHECK OUT...
OUR HOT AND COLD
GRAB & GO SECTION



ALLERGIES
PLEASE SPEAK TO A MEMBER OF STAFF IF YOU HAVE ANY
ALLERGY AND NEED TO KNOW WHAT'S INSIDE OUR FOOD
DISHERS, THEY WILL ADVISE YOU OF THE AVAILABLE CHOICES.

Look out for a purple lanyard



These are Charlton's main DSL's:

If you see a member of staff wearing a purple lanyard, this means they are a designated safeguarding lead.

They have had specific training for dealing with any safeguarding matters that you may have.

If you have any worries or concerns do not hesitate to go to them to report any safeguarding concerns or for help and advice.



Sparx Reader

YEAR 7



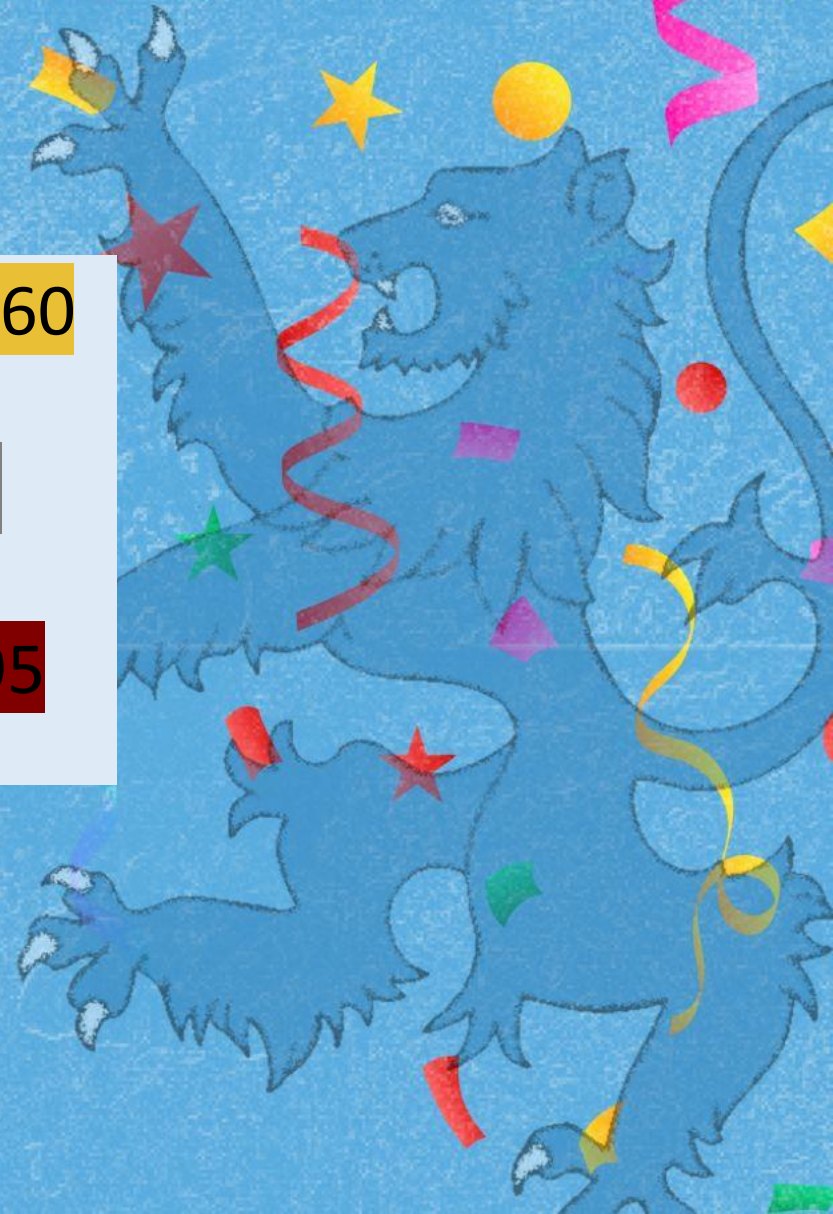
1 Jacob K (Jacob the Strategist) 2,060



2 Jim T (Jim the Defender) 1,599



3 Leena AHS (Leena the Star) 1,095



Sparx Reader

YEAR 8



1 Jedidiah B (Jedidiah the Ace) 2,022



2 Charlie O (Charlie the Miracle) 1,040



3 Nana Y (Nana the Leader) 629

Sparx Reader

YEAR 9



1 Shujat M (Shujat the Guide) 1,781



2 Zaine B (Zaine the Marvel) 1,620



3 Minahil W (Minahil the Icon) 1,474

Sparx Reader

YEAR 10



1 Aiza K (Aiza the Sentinel) 2,585



2 Riaaz H (Riaaz the Writer) 1,190



3 Jamie H (Jamie the Bolt) 1,100

Sparx Reader

YEAR 11



1 Sandiv W (Sandiv the One and Only) 2,832



2 Gabriella R (Gabriella the Wonder) 1,643



3 Nutfiya Y (Nutfiya the Sunshine) 1,556

The background features a white surface with light blue horizontal lines. It is decorated with various colorful brushstrokes and patterns: a green swirl on the top left, a blue wavy shape on the top left, a purple star-like shape on the top right, a red spiral on the bottom left, a yellow wavy shape on the bottom right, and a green leaf-like pattern on the bottom right.

Inclusion Team Shoutouts!

Year 7

Jakub M
Rafe W
Florence P
Lucy B
Sienna D
Lilyie P

Year 8

Cyan Mc
Josh K
Zac C
Stephen S

Year 9

Dan G

Year 10

Year 11

ANTI-BULLYING WEEK

10th - 14th November 2025

Every year, bullying impacts the lives of countless young people.

Use your Power for Good to safely speak up and raise awareness when you see bullying, face to face or online.

Together, we can use our Power for Good to end bullying – for good!

We're ALL unique and different, and let's be kind to each other and respect each other's individuality!

#PowerforGood



**STOP
BULLYING**

**POWER
FOR
GOOD**

#ANTIBULLYINGWEEK





World Kindness Day!!

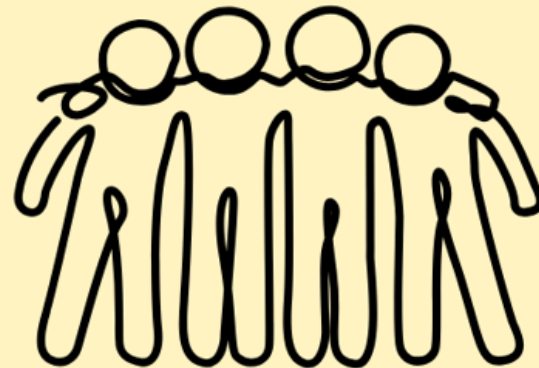
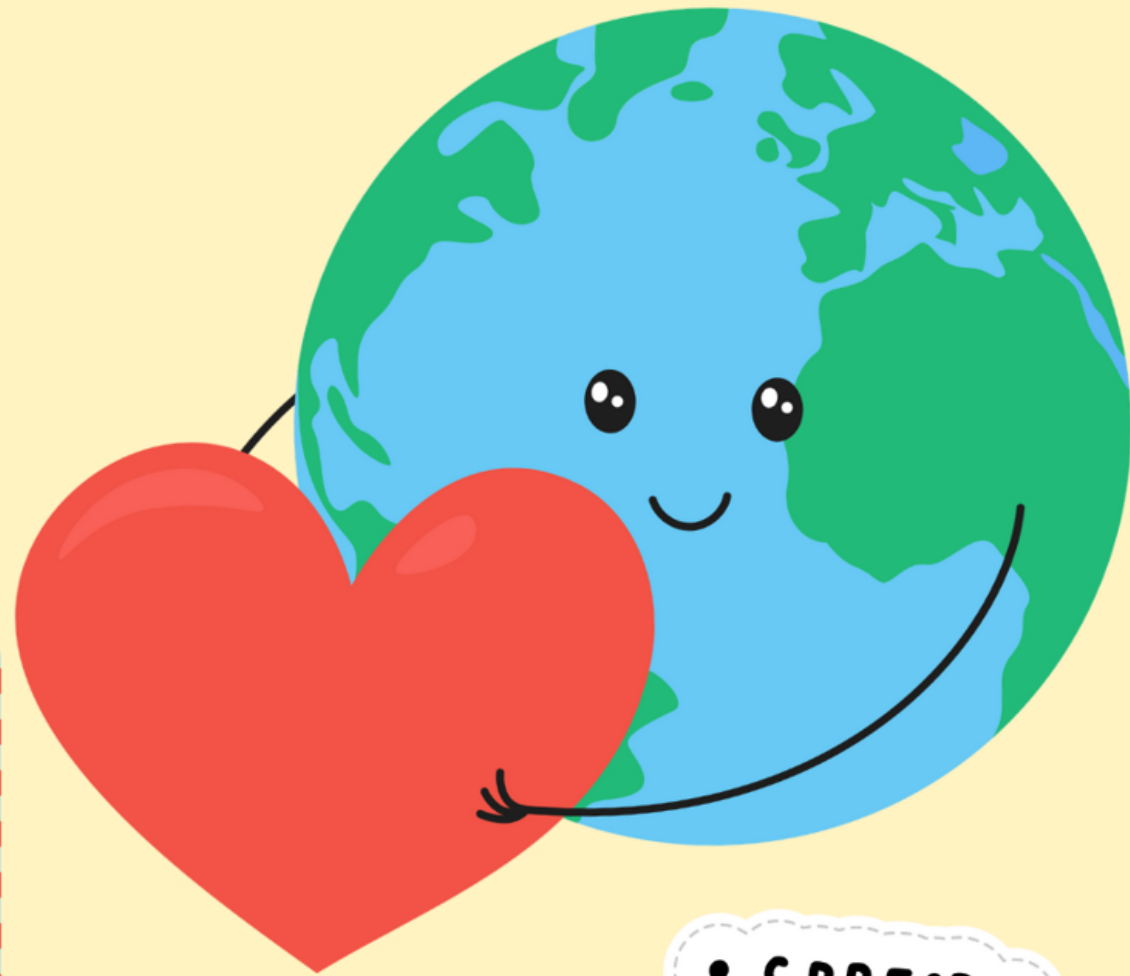
Thursday 13th November

World Kindness Day 2025 celebrates acts of kindness across the Globe. Why not perform your own act of kindness today?

You could:

- Show your appreciation by saying Thank You!
- Lend a hand to someone in need!
- Compliment someone!

LET'S MAKE KINDNESS THE NORM!



• SPREAD •
Kindness



ODD SOCK

DAY!

Prizes for the best
odd sock
combination in
each year group!

FRIDAY 14TH NOVEMBER, 2025.

Let's make this the Best Day Ever and UNITE to stamp out BULLYING!

Odd Socks Day is a powerful way for pupils and staff to show their support for Anti-Bullying Week!

By wearing odd socks, we celebrate what makes each of us unique and that differences are something to be celebrated, not bullied!

**EVERYONE IS WELCOME, EVERYONE BELONGS, AND
EVERYONE IS CELEBRATED!**



WINTERFEST BEGINS!!!

GIFT DONATIONS!

**WE'RE LOOKING TO DONATE GIFTS
TO THOSE LESS FORTUNATE
THIS CHRISTMAS PERIOD!
IF YOU WOULD LIKE TO**

**TAKE PART,
PLEASE WRAP UP YOUR GIFT AND LABEL THEM
(EG BOY,12 OR GIRL,7)**

**ALL GIFTS TO BE GIVEN TO MRS DAVIES IN THE
NURTURE KITCHEN!**



Barcelona TRIP JUNE 27



If you are studying or want to take GCSE Art and/or GCSE Textiles (Current Year 9s & 10s Only) and haven't already done so please get a trip letter from AR2, Miss Gibb for our Barcelona Trip in June 2027.

We only have a couple of places left!



bonjour ♥

Paris Trip 2026

OPEN TO YEAR 9 AND 10

**PLEASE SEE MRS FOY FOR A LETTER IF YOU ARE
INTERESTED IN GOING!**



STRANGE-SAGAS-R

WHERE MYSTERY MEETS CREATIVITY

WRITE YOUR OWN "MINI-SAGA" STORY
FOR THE CHANCE TO WIN

£100 AMAZON GIFT CARD

AND A TROPHY!!!

YOUR STORY WILL ALSO BE PUBLISHED IN THE
YOUNG WRITERS BOOK,
AVAILABLE IN THE LIBRARY!

FOR MORE INFORMATION, SEE MISS
WHITFORD IN THE LIBRARY!

100
WORD
LIMIT!!!

CLOSING
DATE:
10TH
DECEMBER!



Make Fabric Christmas Ornaments with Miss Gibb

Every Wednesday in AR2 from 12th November – 10th December
Sign up sheet will be outside AR2 on Monday 3rd November



WINTERFEST BEGINS!!!

CHRISTMAS CARD DESIGN COMPETITION!

DESIGN YOUR OWN CHRISTMAS
CARDS TO BE SOLD!



ALL MONEY RAISED WILL GO TO
CHARITY!



SUBMIT YOUR DESIGN TO MISS THOMAS
IN PASTORAL!





SCHOOL NURSE DROP IN MONDAY AND WEDNESDAY WHAT WE CAN OFFER YOU:

A SCHOOL NURSE WILL ATTEND YOUR SCHOOL WEEKLY FOR HEALTH DROP-IN SESSIONS, THESE ARE A CONFIDENTIAL PROVIDING ADVICE, SUPPORT, AND SIGNPOSTING FOR PHYSICAL AND EMOTIONAL HEALTH.

A SCHOOL NURSE CAN PROVIDE YOU WITH A C-CARD FOR FREE CONDOMS, SEXUAL HEALTH ADVICE AND SUPPORT

OUR EMOTIONAL HEALTH AND WELLBEING LEAD NURSE ALSO RUNS A CLINIC FOR PARENTS EVERY MONDAY, 9-2PM AT SUTTON HILL MEDICAL PRACTICE (ONLINE APPOINTMENTS ALSO AVAILABLE UPON REQUEST ON 0333 358 3328).

YOUNG PEOPLE CAN CALL THE HEALTH FOR TEENS LINE TO CONFIDENTIALLY SEEK SUPPORT ON 07520619051

**ASK YOUR SCHOOL TO REFER IN OR SELF-REFER BY CALLING US ON
0333 358 3328**



theccard

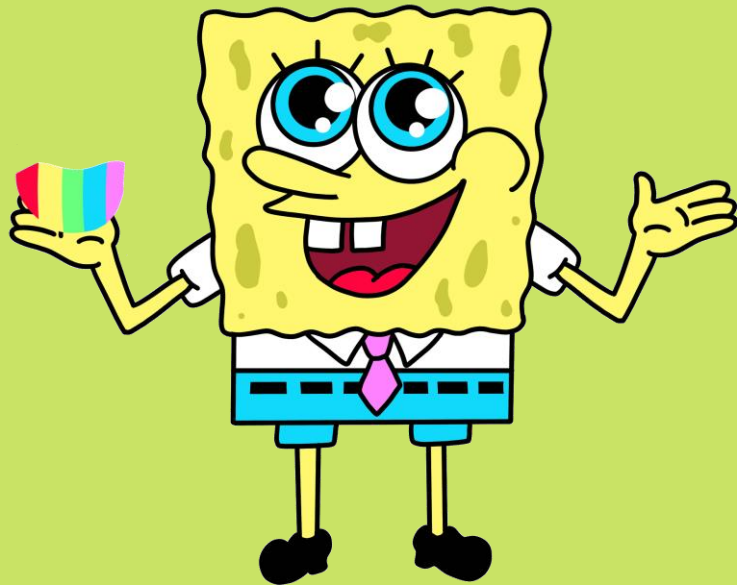
HEALTH FOR TEENS

**YOUNG
MiND
kooth**

HURRAH!

TOP ATTENDANCE

TOTAL



SINCE THE START OF TERM
97.50%
TUTOR GROUP

7.01





House Activities

HOUSE	POINTS
Birch	47039
Willow	48738
Hawthorn	46585
Sycamore	36714

House	Weekly Points
Willow	4183
Sycamore	3794
Birch	5948
Hawthorn	5739

Top house this week:
Birch



Cumulative Tutor Points so far this term:

7-01	2892
7-02	2284
7-03	4328
7-04	4146
7-05	1921
7-06	2646
7-07	2527
7-08	2639
7-09	2294

8-01	2371
8-02	1908
8-03	2487
8-04	2344
8-05	2882
8-06	2524
8-07	3176
8-08	2929
8-09	2351

9-01	1738
9-02	1249
9-03	1347
9-04	2670
9-05	2644
9-06	2349
9-07	1470
9-08	2402
9-09	2023

10-01	1484
10-02	1800
10-03	1177
10-04	2254
10-05	1931
10-06	2911
10-07	3154
10-08	1323
10-09	1505

11-01	1883
11-02	1943
11-03	1474
11-04	1368
11-05	1819
11-06	1421
11-07	2141
11-08	2240
11-09	1910



New house leaders to be announced soon..
**WHICH SLT MEMBER WILL LEAD YOUR HOUSE
TO VICTORY?**

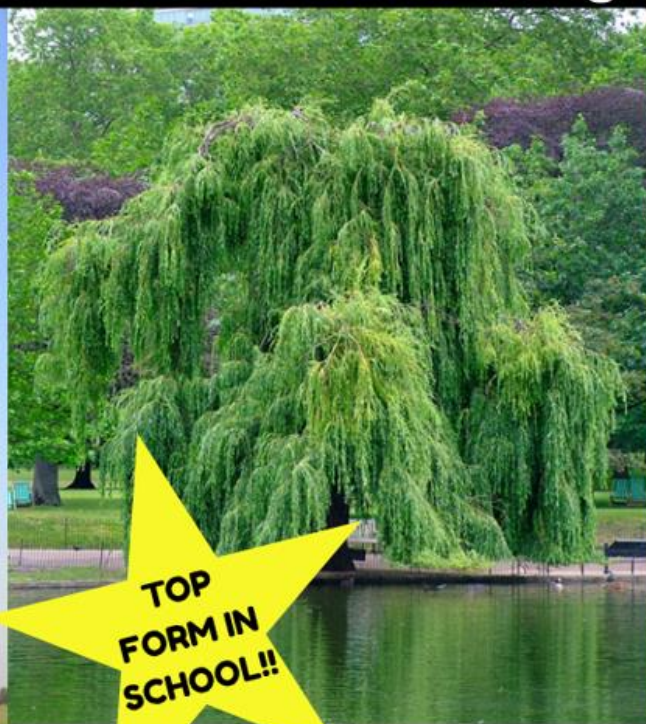




Top Tutor Group for each House



7.1



TOP
FORM IN
SCHOOL!!

7.4



8.6



7.9

The Bridge Enterprise Group



REQUEST FOR FLAT 2 OR 4 HOLED
BUTTONS FOR AN UPCOMING PROJECT.
PLEASE BRING ANY DONATIONS INTO
RECEPTION. THANK YOU.





**MESSAGE
FROM ART!
WE NEED ANY OLD
MAGAZINES FOR AN
UPCOMING ART
PROJECT! PLEASE DROP
THEM INTO RECEPTION IF
YOU HAVE ANY.**

**GOT BOOKS AT HOME YOU DON'T READ
ANYMORE?**

CONSIDER DONATING THEM TO THE LIBRARY!



PLEASE BRING ANY UNWANTED BOOKS TO MISS WHITFORD IN THE LIBRARY!

FOLLOW OUR INSTAGRAM ACCOUNTS TO SEE THE WONDERFUL WORK
CREATED BY THE TALENTED STUDENTS HERE AT CHARLTON!

Follow



@CHARLTONSCHOOLGEO

@CHARLTONSCHOOLEXPRESSIVEARTS

@CHARLTONSCHOOLMEDIA

@CHARLTONSCHOOLPE

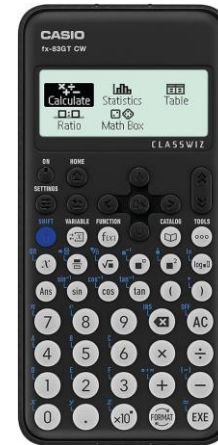
@CHARLTONSCHOOLART

@CHARLTONSCHOOLREVISION

Remember your correct Uniform & Equipment

■ Essential Equipment

- 2x Pens
- 1x Pencil
- Red pen for Close The Gap work
- Ruler
- Scientific Calculator
- Protractor



Calculators are available to buy from the finance office in school for £11.

Charlton School Uniform Guide 2025/26

Full Policy can be found at www.charlton.uk.com



Shirts, Ties
& Blazers



Hoodies or Zip up Jackets should not be worn instead of School blazers.

Uniform Guide
2025/26



Skirt Length:
Knee length
pleated skirts only



Trousers:
Boys & Girls

No leggings, skinny or
tight trousers.
Straight leg only

Earrings:



Yes - Black leather style school shoes

Footwear:

No - Sports trainers (air bubbles or canvas)





CHARLTON SCHOOL TECHNOLOGY DEPARTMENT INVITES YOU TO:

CATERING CLUB FOR YEAR 9

TC7 EVERY WEDNESDAY
FROM 3.10-4.10

THIS CLUB IS TO A COOKING CLUB WHERE YOU WILL
MAKE A RANGE OF SWEET AND SAVOURY ITEMS.

SIGN UP SHEET WILL GO UP OUTSIDE TC7 ON
THURSDAYS THE WEEK BEFORE- MUST SIGN UP AS
PLACES ARE LIMITED.



WOMEN'S Empowerment Group



Dates to be confirmed
Location: DR1



"I want every girl to know that her voice can change the world." - Malala Yousafzai

Pickleball Club

On Thursdays Week 1 with
Miss Dubocquet
3:10-4:10



The background of the poster is a light cream color, decorated with various colorful illustrations of craft supplies. In the top left, there are two paintbrushes with yellow handles and brown bristles. Below them is a small purple heart and a blue rectangular object. To the right of the paintbrushes is a spool of green thread. In the top right, there is a purple jar and a white box with colorful patterns. On the right side, there are three markers in blue, red, and green. At the bottom left, there is a large brown paint palette with several colored spots (blue, yellow, green, purple) and a white circular area. At the bottom right, there is a small green Christmas tree with yellow lights and red ornaments, next to a red gift box. The main title 'CREATIVE CRAFT CLUB' is written in large, bubbly, light green letters with a thick pink outline, arched across the top of the poster.

CREATIVE CRAFT CLUB

FRIDAYS IN TC4!

**SIGN UP SHEETS OUTSIDE TC4,
PLEASE ADD YOUR NAMES
EVERY WEEK!**

THE CRAFT THEME IS:

 **CHRISTMAS CRAFT!**

**LIMITED TO
15 SPACES!!!**



Dance Company Rehearsals

**Every Wednesday after
school in the Main Hall**

3:10-4:10PM

CHOIR!

Wednesdays
3:10-4:10pm





KS3 Dance Club

**Tuesdays
3:10-4:10pm**





ART CLUB

EVERY TUESDAY
AFTERSCHOOL IN AR1
3:10PM - 4:10PM
YEARS 7-9



HOMEWORK CLUB!

**Tuesday and Wednesday
after school in NU4!**



SOCIAL CLUB!

Every Thursday
in NU4

INVITE
ONLY!



COMING SOON

Promoting
Non-Fiction
Reading



Human
Rights Day



WinterFest
Continues!



Christmas
Poetry
Competition



After School/Lunch Extra Curricular Activities

Club / Activity / Term	Day and Times	Location	Available to the following year groups					Additional Information e.g. equipment needed etc.
			7	8	9	10	11	
Stem Club	Monday 3:10pm to 4:10pm	SC7	✓	✓				This club is invite only.
Bridge Homework Club	Tuesday 3:10pm to 4:10pm	NU4	✓	✓	✓	✓	✓	
Library Access	Monday to Thursday 3:10pm to 4:00pm Friday 3:10-3:30pm	Library	✓	✓	✓	✓	✓	
Diversity LGBTQ+ CLUB	Monday 3:10pm to 4:10pm Week 2 Only	MA5	✓	✓	✓	✓	✓	
D of E - Mrs Bird	Monday 3:10pm to 4:10pm	Main Hall			✓			Usually from Feb to July. Please see Mrs Bird
Bridge Social Club	Wednesday & Thursday 3:10 pm to 4:10 pm	NU4	✓	✓	✓	✓	✓	By invitation only
MFL Club	Thursday 3:10pm to 4:10pm Week 2 Only	MFL5	✓	✓	✓	✓	✓	
Creative Craft – Mrs Turner	To be confirmed	TC4	✓	✓	✓	✓	✓	This club will be starting in October.
Strategy Games Club & Chess Club – Mr Millar	Tuesday 3:10pm to 4:10pm	PE1	✓	✓	✓	✓	✓	You can bring your own cards if you wish.
Dungeon and Dragons Club	Monday 3:10 - 4:10pm	PE1	✓	✓	✓	✓	✓	
KS3 Art Club	Tuesday 3:10 - 4:10pm	AR1	✓	✓	✓			
KS4 Art Club	Thursday 3:10 - 4:10pm	AR1				✓	✓	
Year 11 Study Zone	Everyday 3:10 - 4:10pm	TBC					✓	
Maths Homework Club	Wednesday 3:10 - 4:10pm	MA7	✓	✓	✓	✓	✓	
UNICEF Project	Tuesday 3:10 - 4:10pm Week 2 ONLY	HU5			✓	✓	✓	Invite only

⇒ ⇒ 3:10pm-4:10pm

Expressive Arts Extra Curricular Activities

	ART	DRAMA	DANCE	MUSIC
MONDAY	<u>School Show Principal Rehearsals</u> Monday rehearsals will need to be attended by anyone who has a principal role in the school production. If you are unsure whether this applies to you, please check with one of the Expressive Arts teachers. Time: 3:10-4:10 Location: Main Hall/DRI Teacher: Expressive Arts Department		<u>Street Dance - TBC</u> Entry by audition, open to all if you have an interest to Dance come along and audition. Led by professional Street Dance choreographer and Dancer Abbie. Time: 3:10-4:10 Location: DRI/MUI Teacher: Abbie	
TUESDAY	<u>Charlton Art Club</u> Open to any KS3 students with an interest in Art. Led by our talented Arts Ambassadors. Time: 3:10-4:10 Location: ARI Teacher: Arts Ambassadors		<u>KS3 Dance Club</u> Open to any KS3 students with an interest in dance. Led by our talented Arts Ambassadors. Time: 3:10-4:10 Location: Main Hall Teacher: Arts Ambassadors	<u>Rock School</u> Bring your guitar, drumsticks or voice and be part of a rock band. Welcome to all levels and abilities but limited places are available – please speak to Mrs. Crampsie if interested. Time: 3:10-4:10 Location: MUI/Practice Rooms Teacher: D Wooley/ S Delves
WEDNESDAY			<u>Dance Company</u> For students with an interest in dance. It will be by invitation only and auditions. Time: 3:10-4:10 Location: Main Hall Teacher: Mrs Wellings	<u>Charlton Choir</u> Open to all year groups and abilities – singing is proven to help with stress, confidence, improve memory and allows you to express yourself and build a sense of community. I hope to see you there! Time: Location: 3:10-4:10 MUI Teacher: Mr Allen
THURSDAY		<u>School Show – Full Cast Rehearsals</u> Rehearsals will need to be attended by everyone who is in the show, including the backstage and technical teams – set and costume designers must attend the meeting in ARI. Speak to Mrs Crampsie if you would like to take part in the show and have not already signed up. Please check the cast list outside MUI/DRI if you are unsure of your role. Time 3:10-4:10 Location: Main Hall Teacher: Expressive Arts Department		
FRIDAY				

⇒ ⇒ **3:10pm-4:10pm**

PE Extra Curricular Activities

	MAIN HALL / FITNESS SUITE	SPORTS HALL	FIELD	TENNIS COURTS
MONDAY	<u>After School</u> Cambridge National / GCSE- catch up – PEI	<u>After School</u> Badminton All Years Ms Byrne	<u>After School</u>	<u>After school</u>
TUESDAY	Staff Meetings <u>After School</u>	Staff Meetings <u>After School</u> Basketball KS4 Mr Thomas	Staff Meetings <u>After School</u>	Staff Meetings <u>After School</u>
WEDNESDAY	<u>After school</u> Staff Fitness Body Pump	<u>After School</u> Netball All years Mrs Johnson	<u>After School</u> Boys Football Year 9,10 & 11 Boys Mr Jones / Mr Lawton / Mr Thomas Year 7 and 8 Boys Mr Jones Girls Football All Years Ms Byrne	<u>After School</u>
THURSDAY	<u>After School</u> Staff Fitness Body Pump	<u>After School</u> Girls Indoor cricket Miss Fozzard All Years	<u>After School</u> Rugby Boys all years Mr Lawton	<u>After School</u>
FRIDAY	<u>After School</u> Fitness / Weight Training All Years Boys & Girls Mr Thomas	<u>After School</u> Basketball KS3 Mr Thomas	<u>After School</u> Girls rugby All years Miss Fozzard and Miss Morris	<u>After School</u> Cambridge National / GCSE- catch up – PEI

⇒ ⇒ 3:10pm-4:10pm