



# Student Bulletin



## Calendar Events

Monday	Tuesday	Wednesday	Thursday	Friday
<u>Week 1</u>		Blue Skies RAF 9:00 – 14:30	Year 7 Settling In Review Evening 16:00 – 18:00  Presentation Evening 18:30 – 20:30	

## Sports Fixtures

DATE	SPORT	RETURN	LOCATION
MON	U12 National Cup VS Meole Brace	16:00	HOME
TUES	Y11 Football Fixture County Cup VS Madely	17:00	AWAY
WED	Y7 Girls Rugby Development – Newport RFC	16:00	AWAY
WED	U14 Cup Game – Football VS Shrewsbury Academy	16:45	HOME
THURS	Y11 National Cup VS Sandbach School Chester	17:00	AWAY
FRI	Grinshill Arthog	12:30	AWAY

## Week Commencing 03/11/25

### Monday 3<sup>rd</sup> - National Stress Awareness Week

National Stress Awareness Week provides us with opportunities to think about wellbeing and find advice/support on managing stress. We need to be able to recognise what's making us stressed to help us learn how to deal with it.

### Wednesday 5<sup>th</sup> - Bonfire Night / Guy Fawkes Night

Bonfire Night is celebrated to remember the defeat of the Gunpowder Plot of 1605. The plot, led by Guy Fawkes, aimed to blow up the House of Parliament in London.

### 08/11/2025 Guru Nanak's Birthday (Sikh Celebration) –

A very important holiday in the Sikh faith as

Guru Nanak Dev's was the First Guru of the Sikhs and the Founder of Sikhism. He was

born in mid-November; the holiday is celebrated according to the lunar date.

## Reminders and Assembly Rota

Please remember  
to follow the  
one way system  
around school

### Face to Face or Virtual

Mon	ALL YEARS (5min SMSC on Harvest)	PAC	Virtual
Tues			
Wed	Student Council Meeting	REC	
Thur			
Fri		HOY	Virtual

This week is:

# Timetable

## Week 1





# Classroom Entry & Exit Routines

## How we enter a classroom:



Get to your class as quickly as possible.



Go straight into your classroom.  
Do not line up or wait outside.



Greet your teacher positively:  
'Good morning, Sir. How are you, Miss?'



Teacher checks uniform as you enter.  
Uniform concerns are logged.



Students enter quietly in a  
calm and purposeful manner.



Sit down and get equipment out straight away.



Begin the starter task in silence.

## How we leave a classroom:

Pack your equipment away  
when the teacher tells you.



Stand behind your chair.



Check your uniform  
(blazer is on and shirt is tucked in).



You will not be allowed to leave  
until your uniform is perfect.



You will be dismissed table by table in an  
organised, calm and timely manner.



# Uniform Reminders

Uniform concern logs can be viewed by parents by accessing the My Child at School website/app:

<https://www.mychildatschool.com/MCAS/MCSParentLogin>. The website/app can also be used to track House Points, sanctions (including C1's, C2's, BRR and Homework Concerns), your child's academic progress and key messages regarding attendance and attitude to learning. We strongly advise you gain access to this and review it regularly to enable you to work alongside us from home.

Please see key reminders regarding proper uniform below to help you and your child ensure they are meeting the schools' expectations and are able to wear their uniform with pride:

## **Boys**

- Blazer and year group tie
- Pale blue shirt (Years 7 - 10)
- White shirt (Year 11)
- Plain black trousers (not jeans)
- Black/grey socks
- Navy V-neck pullover with school crest (Optional to be worn under the blazer)
- Plain black shoes (No trainers or canvas shoes)

## **Girls**

- Blazer and year group tie
- Pale blue shirt - Revere collar is not allowed (Years 7 - 10)
- White shirt - Revere collar is not allowed (Year 11)
- Black tailored trousers (not skinny trousers or leggings, straight leg only), or Black knee length pleated skirt.
- Black or white socks or black tights
- Plain black flat walking shoes – Max. heel height 4cms. Max Sole 2cms
- Navy V-neck pullover with school crest (Optional to be worn under the blazer)
- Muslim girls may wear a navy-blue hijab and a navy blue kameez, abaya or maxi skirt with black trousers. Students are expected to wear a tie and blazer with their kameez, abaya or maxi.

**Students should not wear hoodies or sweatshirts under their blazers at any time, including breaks or lunchtimes.**



# Uniform Bank

*Take what you need, give what you can.*



- Do you need help obtaining uniform?
- Do you wish to swap any items of uniform that are in good condition but no longer fit?

**We have uniform and PE Kit available for a voluntary donation**

**Please ask at Reception or email  
[reception@charlton.uk.com](mailto:reception@charlton.uk.com)**

**CHARLTON SCHOOL**

*Providing an environment in which all students can succeed,  
with learning at the heart of all we do.*

Please can you continue to send in any items of Uniform you no longer require, especially blazers, and if you would like to swap sizes, please pop in and ask for Mrs Kinsey or Miss Littleford, or visit Pastoral.



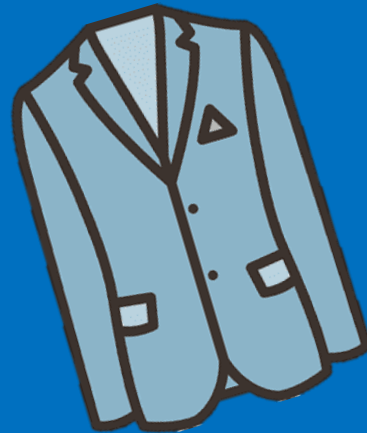
**\*\* We are in need of shoes, trainers and PE Kit, as well as blazers and ties\*\***

**Please drop off any donations in reception.**

Your contributions really do make a difference.

We are really grateful for your support,  
Thankyou – Mrs Kinsey – Deputy DSL

**THANK YOU!**



# Reminder!



Please can parents/carers make sure  
they name student clothes and bags.  
When they are lost this makes it  
possible to find them again!





# Our British Values

Democracy



Rule of Law



Mutual Respect



Individual Liberty



Tolerance



Democracy

Democracy can be seen as a state of society characterised by equality of rights and privileges. It can also refer to our nation's electoral systems.

Rule of Law

It is expected that while different people may hold different views about what is 'right' and 'wrong', all people living in England are subject to its law.

Mutual Respect

The proper regard for an individual's dignity, which is reciprocated.

Individual Liberty

Individual liberty suggests the free exercise of rights generally seen as outside Government control.

Tolerance

A fair, objective, and permissive attitude to those whose faith, religion and beliefs may differ from one's own.

RESPECT

RESILIENCE

RESPONSIBILITY







The Charlton Virtue in Focus is:

*Compassion*

RESPECT

RESILIENCE

RESPONSIBILITY





# CANTEEN LUNCH MENU

WEEK 1	MONDAY	TUESDAY	WEDNESDAY	THURSDAY	FRIDAY
OPTION 1	MAC AND CHEESE WITH CRUNCHY TOPPING	BEEF CHILLI WITH RICE AND SOUR CREAM	PORK OR CHICKEN SAUSAGE WITH ROAST POTATOES & GRAVY	CHICKEN TIKKA CURRY WITH 50/50 RICE	CHIP SHOP FRIDAY WITH CHIPS AND GARDEN PEAS
OPTION 2	QUORN & VEGETABLE CHOW MEIN	FALAFEL WRAPS WITH COUSCOUS AND MINT & YOGHURT DIP	VEGAN SAUSAGE WITH ROAST POTATOES & GRAVY	SWEET POTATO & CHICKPEA CURRY WITH 50/50 RICE	CHEESE & LEEK PASTA BAKE WITH CHIPS AND GARDEN PEAS
ON THE SIDE	VEGETABLES OF THE DAY	VEGETABLES OF THE DAY	VEGETABLES OF THE DAY	VEGETABLES OF THE DAY	VEGETABLES OF THE DAY
DESSERT OF THE DAY	SELECTION OF HOMEBAKES	SELECTION OF HOMEBAKES	HOT PUDDING & CUSTARD	SELECTION OF HOMEBAKES	SELECTION OF HOMEBAKES

ALSO AVAILABLE:  
SOUP OF THE DAY  
FILLED JACKET POTATOES

CHECK OUT...  
OUR HOT AND COLD  
GRAB & GO SECTION

ALLERGIES  
PLEASE SPEAK TO A MEMBER OF STAFF IF YOU HAVE ANY ALLERGY AND NEED TO KNOW WHAT'S INSIDE OUR FOOD DISHES, THEY WILL ADVISE YOU OF THE AVAILABLE CHOICES.

# Look out for a purple lanyard



These are Charlton's main DSL's:

If you see a member of staff wearing a purple lanyard, this means they are a designated safeguarding lead.

They have had specific training for dealing with any safeguarding matters that you may have.

If you have any worries or concerns do not hesitate to go to them to report any safeguarding concerns or for help and advice.





# Sparx Reader

## YEAR 7



1 Sophie B (Sophie the Hopeful) 2,972



2 Barbara G (Barbara the Princess)  
1,887



3 Qais S 1,517





# Sparx Reader

## YEAR 8



1 Jospeh T (Joseph the Creator) 708

2 Cyan M (Cyan the Romantic) 550

3 Rayyan A.N (Rayyan the Superman) 546



# Sparx Reader

## YEAR 9



1 Haleema S (Haleema the Icon) 2,583

2 Daisy T (Daisy the Collaborator) 2,458

3 Abdullah C (Abdullah the Sentinel) 2,003



# Sparx Reader

## YEAR 10



1 Benjamin S (Benjamin the Peacemaker) 2,625



2 Keziah K (Keziah the Exemplar) 733



3 Fletcher B (Fletcher the Wizard) 477



# Sparx Reader

## YEAR 11



1 Harry S (Harry the Something) 875

2 Anuhas S (Anuhas the Knight) 796

3 Ruby B (Ruby the Illuminator) 336





# Inclusion Team Shoutouts!

## Year 7

Jaxon B  
Connor B  
Febe S  
Stevie C

## Year 8

Zac C  
Alex C  
Isabelle F

## Year 9

Ollie B  
Ruby B  
Izzie M

## Year 10

Grace B  
Faith B  
Aliyah A  
Ellie C  
Lydia T  
Lucy W  
Sophie E  
Scarlett H  
Ewan B

## Year 11

Xavier A  
Harry S  
Maddison B



# Barcelona TRIP JUNE 27



If you are studying or want to take GCSE Art and/or GCSE Textiles (Current Year 9s & 10s Only) and haven't already done so please get a trip letter from AR2, Miss Gibb for our Barcelona Trip in June 2027.

We only have a couple of places left!





The background is a dark blue night sky filled with various colorful fireworks in shades of orange, yellow, red, and blue. On the left side, there is a large, detailed illustration of a bonfire with bright orange and yellow flames.

# BONFIRE NIGHT

Bonfire Night, also known as “Guy Fawkes Night”, is celebrated to remember the defeat of the Gunpowder Plot of 1605. The plot, led by Guy Fawkes, aimed to blow up the House of Parliament in London.

Remember to  
stay safe  
around  
Bonfires and  
Fireworks!





# Thank you, Team Blue!!!



You've raised

£140



for the Youth Association, from our Bake Sale on Friday 24<sup>th</sup>  
October! Well Done!!!



# Make Fabric Christmas Ornaments with Miss Gibb

Every Wednesday in AR2 from 12<sup>th</sup> November – 10<sup>th</sup> December  
Sign up sheet will be outside AR2 on Monday 3<sup>rd</sup> November





# All Years Christmas Card Competition



Last year you helped us raise money to aid a student with their Leukaemia treatment.

This year we would like to raise money for Cancer Research!

**We are launching a competition for all year groups to design a Christmas card!!**

**The winning card will be used as the Charlton School Christmas Card for the year!**

To enter, please submit your design to Mr Lawton or Miss Thomas (Year 11 Pastoral Team) by Friday 7th November!!  
(You can submit your design in person or via email)



**CANCER  
RESEARCH  
UK**





# SCHOOL NURSE DROP IN MONDAY AND WEDNESDAY WHAT WE CAN OFFER YOU:

A SCHOOL NURSE WILL ATTEND YOUR SCHOOL WEEKLY FOR HEALTH DROP-IN SESSIONS, THESE ARE A CONFIDENTIAL PROVIDING ADVICE, SUPPORT, AND SIGNPOSTING FOR PHYSICAL AND EMOTIONAL HEALTH.

A SCHOOL NURSE CAN PROVIDE YOU WITH A C-CARD FOR FREE CONDOMS, SEXUAL HEALTH ADVICE AND SUPPORT

OUR EMOTIONAL HEALTH AND WELLBEING LEAD NURSE ALSO RUNS A CLINIC FOR PARENTS EVERY MONDAY, 9-2PM AT SUTTON HILL MEDICAL PRACTICE (ONLINE APPOINTMENTS ALSO AVAILABLE UPON REQUEST ON 0333 358 3328).

YOUNG PEOPLE CAN CALL THE HEALTH FOR TEENS LINE TO CONFIDENTIALLY SEEK SUPPORT ON 07520619051

ASK YOUR SCHOOL TO REFER IN OR SELF-REFER BY CALLING US ON  
0333 358 3328



theccard

**HEALTH FOR TEENS**

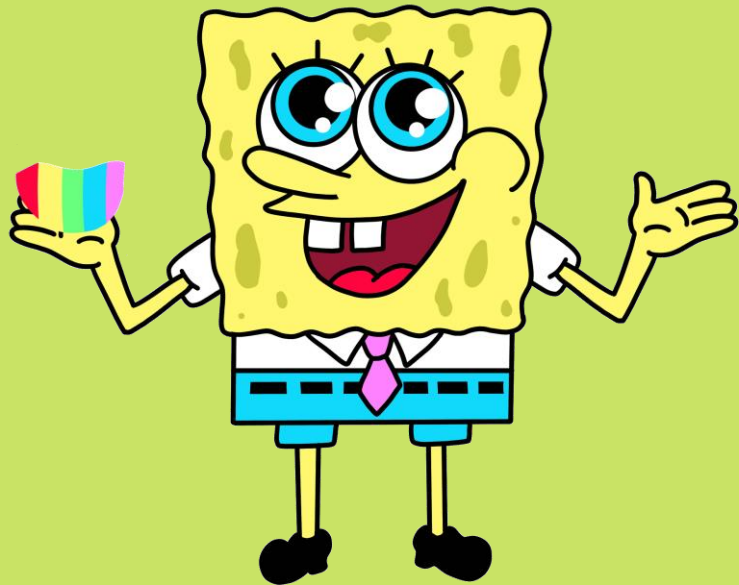
**YOUNG  
MiND  
kooth**



HURRAH!

TOP ATTENDANCE

TOTAL



SINCE THE START OF TERM

97.27%

TUTOR GROUP

7.01





## House Activities

HOUSE	POINTS
Birch	40273
Willow	43847
Hawthorn	40064
Sycamore	35532

House	Weekly Points
Willow	5809
Sycamore	5397
Birch	6883
Hawthorn	4794

Top house this week:  
**Birch**





# Cumulative Tutor Points so far this term:

7-01	2450
7-02	2202
7-03	3756
7-04	3743
7-05	1439
7-06	1987
7-07	2097
7-08	2233
7-09	1894

8-01	1475
8-02	1447
8-03	1645
8-04	1765
8-05	1808
8-06	1779
8-07	2150
8-08	1669
8-09	1577

9-01	1567
9-02	1052
9-03	1159
9-04	2275
9-05	1953
9-06	2094
9-07	1268
9-08	2088
9-09	1786

10-01	1145
10-02	1376
10-03	1022
10-04	1795
10-05	1363
10-06	2244
10-07	2648
10-08	1137
10-09	1180

11-01	1739
11-02	1765
11-03	1277
11-04	1310
11-05	1649
11-06	1242
11-07	1779
11-08	2049
11-09	1773



*New house leaders to be announced soon..*  
**WHICH SLT MEMBER WILL LEAD YOUR HOUSE  
TO VICTORY?**







# Top Tutor Group for each House



7.1



7.3



8.6



7.9



# The Bridge Enterprise Group



REQUEST FOR FLAT 2 OR 4 HOLED  
BUTTONS FOR AN UPCOMING PROJECT.  
PLEASE BRING ANY DONATIONS INTO  
RECEPTION. THANK YOU.







**MESSAGE  
FROM ART!  
WE NEED ANY OLD  
MAGAZINES FOR AN  
UPCOMING ART  
PROJECT! PLEASE DROP  
THEM INTO RECEPTION IF  
YOU HAVE ANY.**



FOLLOW OUR INSTAGRAM ACCOUNTS TO SEE THE WONDERFUL WORK  
CREATED BY THE TALENTED STUDENTS HERE AT CHARLTON!

Follow



@CHARLTONSCHOOLGEO

@CHARLTONSCHOOLEXPRESSIVEARTS

@CHARLTONSCHOOLMEDIA

@CHARLTONSCHOOLPE

@CHARLTONSCHOOLART

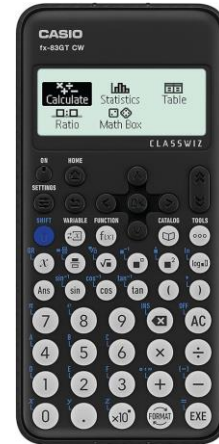
@CHARLTONSCHOOLREVISION



# Remember your correct Uniform & Equipment

## ■ Essential Equipment

- 2x Pens
- 1x Pencil
- Red pen for Close The Gap work
- Ruler
- Scientific Calculator
- Protractor



Calculators are available to buy from the finance office in school for £11.

## Charlton School Uniform Guide 2025/26

Full Policy can be found at [www.charlton.uk.com](http://www.charlton.uk.com)



Shirts, Ties  
& Blazers



Hoodies or Zip up Jackets should not be worn instead of School blazers.

Uniform Guide  
2025/26



Skirt Length:  
Knee length  
pleated skirts only



Trousers:  
Boys & Girls

No leggings, skinny or  
tight trousers.  
Straight leg only

Earrings:



Yes - Black leather style school shoes

Footwear:

No - Sports trainers  
(air bubbles or canvas)







# WOMEN'S Empowerment Group



Dates to be confirmed  
Location: DR1



"I want every girl to know that her voice can change the world." - Malala Yousafzai



# Pickleball Club

On Thursdays Week 1 with  
Miss Dubocquet  
3:10-4:10







# CREATIVE CRAFT CLUB

On Fridays in TC4 - with a maximum number of 15 spaces - students must sign up with Mrs Turner each week.

Sign up sheet will be outside of TC4 for students to add their names to each week.

The theme for the first few weeks will be Halloween Crafts.





# **Dance Company Rehearsals**

**Every Wednesday after  
school in the Main Hall**

**3:10-4:10PM**



# CHOIR!

Wednesdays  
3:10-4:10pm







# **KS3 Dance Club**

**Tuesdays  
3:10-4:10pm**





# ART CLUB

EVERY TUESDAY  
AFTERSCHOOL IN AR1  
3:10PM - 4:10PM  
YEARS 7-9



A vibrant blue poster for a Homework Club. In the center is a large white cloud-like shape with a black outline containing the text. Surrounding the cloud are various school supplies: a pen, scissors, paper clips, a calculator, a protractor, and a compass in the top corners; a girl writing in a notebook on the bottom left; a boy writing in a notebook on the bottom right; and two spiral notebooks and more paper clips at the bottom center. White circles of varying sizes are scattered around the central text area.

# HOMework CLUB

Tuesday and Wednesday  
after school in NU4

# SOCIAL CLUB!

Every Thursday  
in NU4

INVITE  
ONLY!





# COMING SOON

**Anti-Bullying Week**



**World Kindness Day**



**Christmas Poetry Competition**



**Human Rights Day**



**Remembrance**



**Promoting Non-Fiction Reading**



**Winter Festival**



# After School/Lunch Extra Curricular Activities

Club / Activity / Term	Day and Times	Location	Available to the following year groups					Additional Information e.g. equipment needed etc.
			7	8	9	10	11	
Stem Club	Monday 3:10pm to 4:10pm	SC7	✓	✓				This club is invite only.
Bridge Homework Club	Tuesday 3:10pm to 4:10pm	NU4	✓	✓	✓	✓	✓	
Library Access	Monday to Thursday 3:10pm to 4:00pm Friday 3:10-3:30pm	Library	✓	✓	✓	✓	✓	
Diversity LGBTQ+ CLUB	Monday 3:10pm to 4:10pm Week 2 Only	MA5	✓	✓	✓	✓	✓	
D of E - Mrs Bird	Monday 3:10pm to 4:10pm	Main Hall			✓			Usually from Feb to July. Please see Mrs Bird
Bridge Social Club	Wednesday & Thursday 3:10 pm to 4:10 pm	NU4	✓	✓	✓	✓	✓	By invitation only
MFL Club	Thursday 3:10pm to 4:10pm Week 2 Only	MFL5	✓	✓	✓	✓	✓	
Creative Craft – Mrs Turner	To be confirmed	TC4	✓	✓	✓	✓	✓	This club will be starting in October.
Strategy Games Club & Chess Club – Mr Millar	Tuesday 3:10pm to 4:10pm	PE1	✓	✓	✓	✓	✓	You can bring your own cards if you wish.
Dungeon and Dragons Club	Monday 3:10 - 4:10pm	PE1	✓	✓	✓	✓	✓	
KS3 Art Club	Tuesday 3:10 - 4:10pm	AR1	✓	✓	✓			
KS4 Art Club	Thursday 3:10 - 4:10pm	AR1				✓	✓	
Year 11 Study Zone	Everyday 3:10 - 4:10pm	TBC					✓	
Maths Homework Club	Wednesday 3:10 - 4:10pm	MA7	✓	✓	✓	✓	✓	
UNICEF Project	Tuesday 3:10 - 4:10pm Week 2 ONLY	HU5			✓	✓	✓	Invite only

⇒ ⇒ 3:10pm-4:10pm



# Expressive Arts Extra Curricular Activities

	ART	DRAMA	DANCE	MUSIC
MONDAY	<u><b>School Show Principal Rehearsals</b></u> Monday rehearsals will need to be attended by anyone who has a principal role in the school production. If you are unsure whether this applies to you, please check with one of the Expressive Arts teachers. <b>Time: 3:10-4:10</b> <b>Location: Main Hall/DRI</b> <b>Teacher: Expressive Arts Department</b>		<u><b>Street Dance - TBC</b></u> Entry by audition, open to all if you have an interest to Dance come along and audition. Led by professional Street Dance choreographer and Dancer Abbie. <b>Time: 3:10-4:10</b> <b>Location: DRI/MUI</b> <b>Teacher: Abbie</b>	
TUESDAY	<u><b>Charlton Art Club</b></u> Open to any KS3 students with an interest in Art. Led by our talented Arts Ambassadors. <b>Time: 3:10-4:10</b> <b>Location: ARI</b> <b>Teacher: Arts Ambassadors</b>		<u><b>KS3 Dance Club</b></u> Open to any KS3 students with an interest in dance. Led by our talented Arts Ambassadors. <b>Time: 3:10-4:10</b> <b>Location: Main Hall</b> <b>Teacher: Arts Ambassadors</b>	<u><b>Rock School</b></u> Bring your guitar, drumsticks or voice and be part of a rock band. Welcome to all levels and abilities but limited places are available – please speak to Mrs. Crampsie if interested. <b>Time: 3:10-4:10</b> <b>Location: MUI/Practice Rooms</b> <b>Teacher: D Wooley/ S Delves</b>
WEDNESDAY			<u><b>Dance Company</b></u> For students with an interest in dance. It will be by invitation only and auditions. <b>Time: 3:10-4:10</b> <b>Location: Main Hall</b> <b>Teacher: Mrs Wellings</b>	<u><b>Charlton Choir</b></u> Open to all year groups and abilities – singing is proven to help with stress, confidence, improve memory and allows you to express yourself and build a sense of community. I hope to see you there! <b>Time: Location: 3:10-4:10</b> <b>MUI</b> <b>Teacher: Mr Allen</b>
THURSDAY		<u><b>School Show – Full Cast Rehearsals</b></u> Rehearsals will need to be attended by everyone who is in the show, including the backstage and technical teams – set and costume designers must attend the meeting in ARI.  Speak to Mrs Crampsie if you would like to take part in the show and have not already signed up. Please check the cast list outside MUI/DRI if you are unsure of your role.  <b>Time 3:10-4:10</b> <b>Location: Main Hall</b> <b>Teacher: Expressive Arts Department</b>		
FRIDAY				

⇒ ⇒ **3:10pm-4:10pm**

# PE Extra Curricular Activities

	MAIN HALL / FITNESS SUITE	SPORTS HALL	FIELD	TENNIS COURTS
MONDAY	<u>After School</u> <b>Cambridge National / GCSE-</b> catch up – PEI	<u>After School</u> <b>Badminton</b> All Years Ms Byrne	<u>After School</u>	<u>After school</u>
TUESDAY	Staff Meetings <u>After School</u>	Staff Meetings <u>After School</u> <b>Basketball</b> KS4 Mr Thomas	Staff Meetings <u>After School</u>	Staff Meetings <u>After School</u>
WEDNESDAY	<u>After school</u> <b>Staff Fitness</b> Body Pump	<u>After School</u> <b>Netball</b> All years Mrs Johnson	<u>After School</u> <b>Boys Football</b> <b>Year 9,10 &amp; 11 Boys</b> Mr Jones / Mr Lawton / Mr Thomas  <b>Year 7 and 8 Boys</b> Mr Jones  <b>Girls Football</b> All Years Ms Byrne	<u>After School</u>
THURSDAY	<u>After School</u> <b>Staff Fitness</b> Body Pump	<u>After School</u> <b>Girls Indoor cricket</b> Miss Fozzard All Years	<u>After School</u> <b>Rugby</b> Boys all years Mr Lawton	<u>After School</u>
FRIDAY	<u>After School</u> <b>Fitness / Weight Training</b> All Years Boys & Girls Mr Thomas	<u>After School</u> <b>Basketball</b> KS3 Mr Thomas	<u>After School</u> <b>Girls rugby</b> All years Miss Fozzard and Miss Morris	<u>After School</u> <b>Cambridge National / GCSE-</b> catch up – PEI

⇒ ⇒ 3:10pm-4:10pm