



# Student Bulletin



## Calendar Events

Monday	Tuesday	Wednesday	Thursday	Friday
Week 1	Year 12 Certificate Collection Evening 16:30 – 18:00			

## Sports Fixtures

DATE	SPORT	RETURN	LOCATION
MON	U14's Boys Presidents Cup @ Belvidiere MJO	16:30	AWAY
MON	U13's Girls County Cup Football BYC	16:45	AWAY
TUES	Secondary School Leadership Day @ Telford College	14:30	AWAY
WED	Year 7 County Cup VS Ercall Wood	15:30	HOME
WED	Year 10 VS Mary Webb	16:00	AWAY
THURS	Year 9/10 Winter League Netball	17:15	AWAY

## Week Commencing 01/12/25

**TUESDAY 2<sup>ND</sup> – MONDAY 8<sup>TH</sup> – GRIEF AWARENESS WEEK:** A compassionate week dedicated to raising awareness about grief, providing support to those who are grieving, and fostering a better understanding of the grieving process.

**MONDAY 1<sup>ST</sup> – WORLD AIDS DAY:** World AIDS Day is dedicated to raising awareness about HIV/AIDS, supporting those living with the virus, and remembering those who have died from AIDS-related illnesses.

**TUESDAY 2<sup>ND</sup> – INTERNATIONAL DAY FOR THE ABOLITION OF SLAVERY:** Focuses on eradicating all forms of modern slavery

**WEDNESDAY 3<sup>RD</sup> – INTERNATIONAL DAY OF PERSONS WITH DISABILITIES:** Dedicated to promoting the rights and well-being of persons with disabilities.

**WEDNESDAY 3<sup>RD</sup> – INTERNATIONAL HUG DAY:** International Hug Day champions warmth, kindness, and connection. A simple hug can bring people together, support mental wellbeing, and helps us feel seen and valued through a simple hug!

## Reminders and Assembly Rota

Please remember to follow the one way system around school



## Face to Face or Virtual

Mon			
Tues			
Wed			
Thur			
Fri	All Years	BAS	VIRTUAL

This week is:

# Timetable

## Week 1





# Classroom Entry & Exit Routines

## How we enter a classroom:



Get to your class as quickly as possible.



Go straight into your classroom.  
Do not line up or wait outside.



Greet your teacher positively:  
'Good morning, Sir. How are you, Miss?'



Teacher checks uniform as you enter.  
Uniform concerns are logged.



Students enter quietly in a  
calm and purposeful manner.



Sit down and get equipment out straight away.



Begin the starter task in silence.

## How we leave a classroom:

Pack your equipment away  
when the teacher tells you.



Stand behind your chair.



Check your uniform  
(blazer is on and shirt is tucked in).



You will not be allowed to leave  
until your uniform is perfect.



You will be dismissed table by table in an  
organised, calm and timely manner.



# Uniform Reminders

Uniform concern logs can be viewed by parents by accessing the My Child at School website/app:

<https://www.mychildatschool.com/MCAS/MCSParentLogin>. The website/app can also be used to track House Points, sanctions (including C1's, C2's, BRR and Homework Concerns), your child's academic progress and key messages regarding attendance and attitude to learning. We strongly advise you gain access to this and review it regularly to enable you to work alongside us from home.

Please see key reminders regarding proper uniform below to help you and your child ensure they are meeting the schools' expectations and are able to wear their uniform with pride:

## **Boys**

- Blazer and year group tie
- Pale blue shirt (Years 7 - 10)
- White shirt (Year 11)
- Plain black trousers (not jeans)
- Black/grey socks
- Navy V-neck pullover with school crest (Optional to be worn under the blazer)
- Plain black shoes (No trainers or canvas shoes)

## **Girls**

- Blazer and year group tie
- Pale blue shirt - Revere collar is not allowed (Years 7 - 10)
- White shirt - Revere collar is not allowed (Year 11)
- Black tailored trousers (not skinny trousers or leggings, straight leg only), or Black knee length pleated skirt.
- Black or white socks or black tights
- Plain black flat walking shoes – Max. heel height 4cms. Max Sole 2cms
- Navy V-neck pullover with school crest (Optional to be worn under the blazer)
- Muslim girls may wear a navy-blue hijab and a navy blue kameez, abaya or maxi skirt with black trousers. Students are expected to wear a tie and blazer with their kameez, abaya or maxi.

**Students should not wear hoodies or sweatshirts under their blazers at any time, including breaks or lunchtimes.**



# Uniform Bank

*Take what you need, give what you can.*



- Do you need help obtaining uniform?
- Do you wish to swap any items of uniform that are in good condition but no longer fit?

**We have uniform and PE Kit available for a voluntary donation**

**Please ask at Reception or email  
[reception@charlton.uk.com](mailto:reception@charlton.uk.com)**

**CHARLTON SCHOOL**

*Providing an environment in which all students can succeed,  
with learning at the heart of all we do.*

Please can you continue to send in any items of Uniform you no longer require, especially blazers, and if you would like to swap sizes, please pop in and ask for Mrs Kinsey or Miss Littleford, or visit Pastoral.



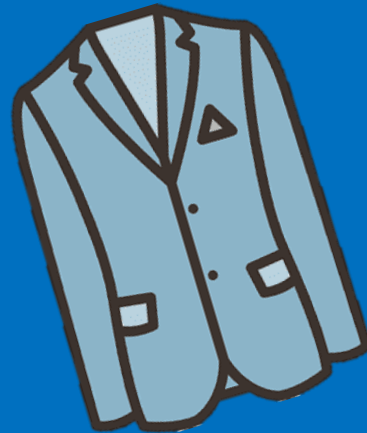
**\*\* We are in need of shoes, trainers and PE Kit, as well as blazers and ties\*\***

**Please drop off any donations in reception.**

Your contributions really do make a difference.

We are really grateful for your support,  
Thankyou – Mrs Kinsey – Deputy DSL

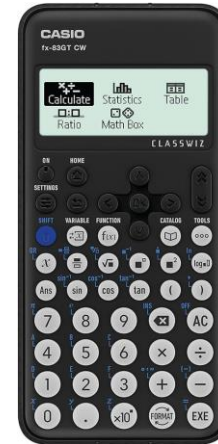
**THANK YOU!**



# Remember your correct Uniform & Equipment

## ■ Essential Equipment

- 2x Pens
- 1x Pencil
- Red pen for Close The Gap work
- Ruler
- Scientific Calculator
- Protractor



Calculators are available to buy from the finance office in school for £11.

## Charlton School Uniform Guide 2025/26

Full Policy can be found at [www.charlton.uk.com](http://www.charlton.uk.com)



Shirts, Ties  
& Blazers



Hoodies or Zip up Jackets should not be worn instead of School blazers.

Uniform Guide  
2025/26



Skirt Length:  
Knee length  
pleated skirts only



Trousers:  
Boys & Girls

No leggings, skinny or  
tight trousers.  
Straight leg only

Earrings:



Yes - Black leather style school shoes

Footwear:

No - Sports trainers  
(air bubbles or canvas)





# Reminder!



Please can parents/carers make sure  
they name student clothes and bags.  
When they are lost this makes it  
possible to find them again!





# Our British Values

Democracy



Rule of Law



Mutual Respect



Individual Liberty



Tolerance



Democracy

Democracy can be seen as a state of society characterised by equality of rights and privileges. It can also refer to our nation's electoral systems.

Rule of Law

It is expected that while different people may hold different views about what is 'right' and 'wrong', all people living in England are subject to its law.

Mutual Respect

The proper regard for an individual's dignity, which is reciprocated.

Individual Liberty

Individual liberty suggests the free exercise of rights generally seen as outside Government control.

Tolerance

A fair, objective, and permissive attitude to those whose faith, religion and beliefs may differ from one's own.

RESPECT

RESILIENCE

RESPONSIBILITY







The Charlton Virtue in Focus is:

# Responsibility

RESPECT

RESILIENCE

RESPONSIBILITY



# CANTEEN LUNCH MENU

WEEK 2	MONDAY	TUESDAY	WEDNESDAY	THURSDAY	FRIDAY
OPTION 1	SWEET & SOUR VEGETABLES WITH POTATO WEDGES	BEEF LASAGNE WITH GARLIC BREAD AND SLAW	CHEF'S PIE OF THE DAY WITH NEW POTATOES	JERK CHICKEN WRAP WITH WEDGES & PINEAPPLE SLAW	CHIP SHOP FRIDAY SERVED WITH CHIPS, MUSHY PEAS AND GRAVY/CURRY SAUCE
OPTION 2	CRUNCHY VEGETABLE PASTA BAKE WITH GARLIC BREAD	VEGETABLE LASAGNE WITH GARLIC BREAD AND SLAW	LEEK, ONION & POTATO TRAY BAKE	CURRIED SQUASH & BUTTERBEAN STEW WITH RICE AND PEAS & SLAW	VEGETABLE BURGER WITH CHIPS
ON THE SIDE	VEGETABLES OF THE DAY	VEGETABLES OF THE DAY	VEGETABLES OF THE DAY	VEGETABLES OF THE DAY	VEGETABLES OF THE DAY
DESSERT OF THE DAY	SELECTION OF HOMEBAKES	SELECTION OF HOMEBAKES	HOT PUDDING & CUSTARD	HOT PUDDING & CUSTARD	SELECTION OF HOMEBAKES

ALSO AVAILABLE:  
SOUP OF THE DAY  
FILLED JACKET POTATOES

CHECK OUT...  
OUR HOT AND COLD  
GRAB & GO SECTION



ALLERGIES  
PLEASE SPEAK TO A MEMBER OF STAFF IF YOU HAVE ANY  
ALLERGY AND NEED TO KNOW WHAT'S INSIDE OUR FOOD  
DISHERS, THEY WILL ADVISE YOU OF THE AVAILABLE CHOICES.



# Look out for a purple lanyard



These are Charlton's main DSL's:

If you see a member of staff wearing a purple lanyard, this means they are a designated safeguarding lead.

They have had specific training for dealing with any safeguarding matters that you may have.

If you have any worries or concerns do not hesitate to go to them to report any safeguarding concerns or for help and advice.



# Sparx Reader

## YEAR 7



**1)** Jacob K (Jacob the Strategist) 987



**2)** Charlotte DSB (Charlotte the Glory) 760



**3)** Qais S (Qais the Boss) 710



# Sparx Reader

## YEAR 8



**1)** Aubrie J-C (Aubrie the Majesty) 2,644



**2)** Ben G (Ben the One and Only) 1,645



**3)** Anna V(Anna the Peacemaker) 1,335



# Sparx Reader

## YEAR 9



**1)** Nobrianna B (Nobrianna the Rebel) 1,926



**2)** Laya B (Laya the Icon) 1,614



**3)** Amna H (Amna the Adventurer) 1,563



# Sparx Reader

## YEAR 10



**1)** Aaliyah J(Aaliyah the Sapphire) 1,073



**2)** Keziah K (Keziah the Nimbus) 814



**3)** Amelia W (Amelia the Star) 719



# Sparx Reader

## YEAR 11



**1)** Anuhas S (Anuhas the Knight) 976



**2)** Jessica T (Jessica the Jaguar) 921



**3)** Scarlett C (Scarlett the Hero) 435



# Sparx Reader

## TERM CHAMPIONS!

WELL  
DONE

- |     |   |
|-----|---|
| 1)  | Catherine A (Catherine the Marvel) 23,311   |
| 2)  | Qais S (Qais the Boss) 20,416               |
| 3)  | Abdullah C (Abdullah the Sentinel) 20,296   |
| 4)  | Sophie B (Sophie the Star) 18,241           |
| 5)  | Jacob K (Jacob the Strategist) 18,223       |
| 6)  | Nobrianna B (Nobrianna the Rebel) 15,471    |
| 7)  | Benjamin S (Benjamin the Peacemaker) 11,361 |
| 8)  | Paven T (Pavan the Monarch) 10,702          |
| 9)  | Alicia E (Alicia the Mastermind) 10,561     |
| 10) | Laya B (Laya the Icon) 9,180                |

GOOD  
WORK!



# Inclusion Team Shoutouts!

## Year 7

Jakub M  
Jacob G  
Ray T  
Sophie C  
Jake N  
Amber S  
Lisa B  
Jack A  
Alyssa B  
Febe S

## Year 8

Harry W

## Year 9

Cal B  
Izzie M  
Jamie G

## Year 10

Ellie H

## Year 11

Rhi G  
Tyler R  
Maddie B  
Will B  
Josh S  
Phoebe F



The poster features a vibrant blue background with scattered confetti in yellow, pink, and orange. Four stylized dancers are positioned around the central text: a male dancer in an orange suit in the top left, a female dancer in a pink outfit in the top right, a female dancer in a purple top and grey pants in the bottom left, and a male dancer in a grey sweater and black pants in the bottom right. At the bottom center, there is a small silhouette of a couple dancing.

# DANCE SHOWCASE

**THURSDAY 4TH DECEMBER**

**6-8PM**

**TICKETS ON SALE FROM STUDENT FINANCE  
STUDENTS WILL ALSO BE SELLING TICKETS**

**DURING FORM THIS WEEK**

**TICKETS £3 EACH**

# 2026 SPANISH TRIP! Valencia



*gracias*

**A PLACE HAS BECOME AVAILABLE FOR THE  
YEAR 11/10 SPANISH TRIP TO VALENCIA!  
PLEASE SEE MRS FOY IN  
MFL3 ASAP  
IF YOU WOULD LIKE A LETTER!**





# Christmas Book Day

**DECEMBER  
1ST  
2025**



**“WHAT IS  
CHRISTMAS BOOK DAY?”**



**“WHY DOES CHRISTMAS  
BOOK DAY MATTER?”**



**CHRISTMAS BOOK DAY TAKES PLACE  
EVERY YEAR ON DECEMBER 1ST!**

**LET'S START THE MONTH WITH SOME  
FESTIVE READING OR GIVE THE GIFT  
OF BOOKS THROUGHOUT DECEMBER!**



**BOOKS HAVE A UNIQUE POWER!  
THEY NURTURE A LIFELONG LOVE FOR  
READING AND LEARNING!  
THEY CAN INSPIRE AND EDUCATE!  
BOOKS OPEN UP A WORLD OF  
IMAGINATION AND CREATIVITY!**





# CHRISTMAS POETRY COMPETITION

SUBMIT YOUR OWN FESTIVE POEM  
FOR THE CHANCE TO WIN  
1 OF 5 CHRISTMAS TREAT BUNDLES!  
ALL ENTRIES MUST BE BETWEEN  
30 - 100 WORDS LONG

AND MUST INCLUDE ONE OF THE FOLLOWING WORDS:

“SNOWFLAKE”

“PRESENT”

“YULE”

CLOSING  
DATE:  
16<sup>TH</sup>  
DECEMBER!

PLEASE SUBMIT YOUR ENTRY TO MISS WHITFORD IN THE LIBRARY!



# STRANGER-SAGAS-R

WHERE MYSTERY MEETS CREATIVITY

WRITE YOUR OWN "MINI-SAGA" STORY  
FOR THE CHANCE TO WIN

£100 AMAZON GIFT CARD

AND A TROPHY!!!

YOUR STORY WILL ALSO BE PUBLISHED  
IN THE YOUNG WRITERS BOOK,  
AVAILABLE IN THE LIBRARY!

**10 DAYS LEFT  
TO ENTER!!!**

**FOR MORE INFORMATION, SEE MISS  
WHITFORD IN THE LIBRARY!**

**100  
WORD  
LIMIT!!!**

**CLOSING  
DATE:  
10TH  
DECEMBER!**





# BOOK FAIR

READ THE BOOKS EVERYONES TALKING ABOUT!



**THANK YOU TO EVERYONE WHO  
CAME TO SUPPORT THE BOOK  
FAIR LAST WEEK!**

**WE RAISED £395.33,  
AND WILL BE ABLE TO PURCHASE  
NEW BOOKS FOR THE LIBRARY!**



**MASSIVE CONGRATULATIONS**  
**TO ALL STUDENTS WHO TOOK**

**PART IN THE**  
**DANCEATHON!**

**YOU'VE RAISED A WHOOPING**

**£1233.20**

**FOR HOPE HOUSE!**



# YEAR 11

# LANGUAGES!

ANY YEAR 11 WHO THINK THEY MAY BE ELIGIBLE  
TO TAKE A GCSE IN THE LANGUAGE THEY SPEAK AT  
HOME

(EG. POLISH OR ITALIAN)

PLEASE SEE MRS HAYWARD IN MFL5  
AS SOON AS POSSIBLE.

YOU MUST BE ABLE TO DO LISTENING, SPEAKING,  
READING AND WRITING IN THE LANGUAGE!!!





# CHRISTMAS ORNAMENTS FOR SALE

**£1.50 EACH  
OR  
3 FOR £4**



**AVAILABLE  
IN THE  
BRIDGE  
(NU4)**

**MADE BY  
THE BRIDGE ENTERPRISE GROUP**





# Year 10 Work Experience

18<sup>th</sup> to 22<sup>nd</sup> May 2026



## DEADLINES:

In County:  
27<sup>th</sup> March 2026

Out of County:  
13<sup>th</sup> February 2026

Please complete  
your  
Employer  
forms!





# WINTERFEST!!!

## CHRISTMAS CARD DESIGN COMPETITION!

DESIGN YOUR OWN CHRISTMAS  
CARDS TO BE SOLD!



ALL MONEY RAISED WILL GO TO  
CHARITY!



SUBMIT YOUR DESIGN TO MISS THOMAS  
IN PASTORAL!



# WINTERFEST!!!

## GIFT DONATIONS!

ALL DONATIONS  
GO TO  
TELFORD  
CRISIS CENTRE



WE'RE LOOKING TO DONATE GIFTS  
TO THOSE LESS FORTUNATE  
THIS CHRISTMAS PERIOD!  
IF YOU WOULD LIKE TO  
TAKE PART,  
PLEASE WRAP UP YOUR GIFT AND LABEL THEM  
(EG BOY,12 OR GIRL,7)

ALL GIFTS TO BE GIVEN TO  
STUDENT SERVICES!







# Paris Trip 2026

**OPEN TO YEAR 9 AND 10**  
**PLEASE SEE MRS FOY FOR A LETTER IF YOU ARE**  
**INTERESTED IN GOING!**



# Make Fabric Christmas Ornaments with Miss Gibb

Every Wednesday in AR2 from 12<sup>th</sup> November – 10<sup>th</sup> December  
Sign up sheet will be outside AR2 on Monday 3<sup>rd</sup> November





# Barcelona TRIP JUNE 27



If you are studying or want to take GCSE Art and/or GCSE Textiles (Current Year 9s & 10s Only) and haven't already done so please get a trip letter from AR2, Miss Gibb for our Barcelona Trip in June 2027.

We only have a couple of places left!





# WINTERFEST!!!

## SELECTION BOX DONATIONS!

WE'RE LOOKING TO DONATE  
SELECTION BOXES  
TO THOSE LESS FORTUNATE!

IF YOU'D LIKE TO DONATE,  
PLEASE GIVE YOUR BOX IN TO  
STUDENT SERVICES!

ALL DONATIONS  
GO TO  
TELFORD  
CRISIS CENTRE!







# **SCHOOL NURSE DROP IN MONDAY AND WEDNESDAY WHAT WE CAN OFFER YOU:**

**A SCHOOL NURSE WILL ATTEND YOUR SCHOOL WEEKLY FOR HEALTH DROP-IN SESSIONS, THESE ARE A CONFIDENTIAL PROVIDING ADVICE, SUPPORT, AND SIGNPOSTING FOR PHYSICAL AND EMOTIONAL HEALTH.**

**A SCHOOL NURSE CAN PROVIDE YOU WITH A C-CARD FOR FREE CONDOMS, SEXUAL HEALTH ADVICE AND SUPPORT**

**OUR EMOTIONAL HEALTH AND WELLBEING LEAD NURSE ALSO RUNS A CLINIC FOR PARENTS EVERY MONDAY, 9-2PM AT SUTTON HILL MEDICAL PRACTICE (ONLINE APPOINTMENTS ALSO AVAILABLE UPON REQUEST ON 0333 358 3328).**

**YOUNG PEOPLE CAN CALL THE HEALTH FOR TEENS LINE TO CONFIDENTIALLY SEEK SUPPORT ON 07520619051**

**ASK YOUR SCHOOL TO REFER IN OR SELF-REFER BY CALLING US ON  
0333 358 3328**



theccard

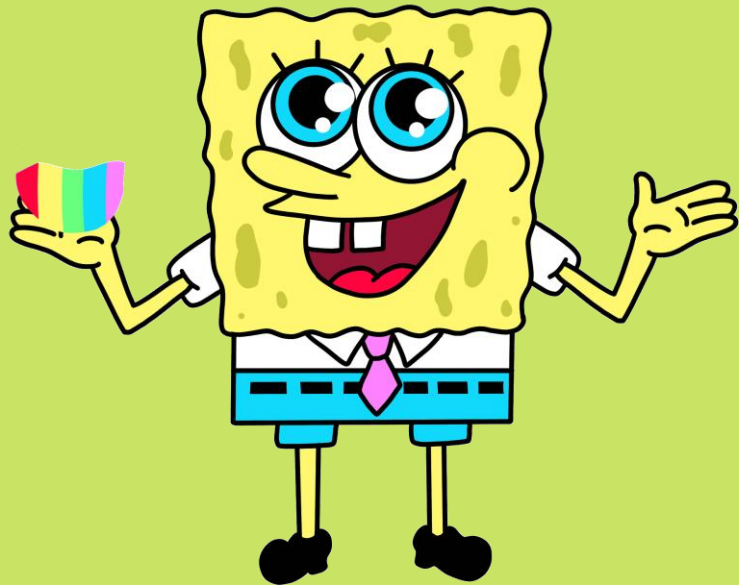
**HEALTH FOR TEENS**

**YOUNG  
MiNDS  
kooth**

HURRAH!

TOP ATTENDANCE

TOTAL



SINCE THE START OF TERM  
97.58%  
TUTOR GROUP  
7.6







## House Activities

HOUSE	POINTS
Birch	65250
Willow	63422
Hawthorn	63968
Sycamore	50314

House	Weekly Points
Willow	3122
Sycamore	2991
Birch	3660
Hawthorn	3287

Top house this week:  
**Birch**



# Cumulative Tutor Points so far this term:

7-01	3702
7-02	2952
7-03	5624
7-04	5226
7-05	2712
7-06	4297
7-07	3298
7-08	3519
7-09	3696

8-01	2828
8-02	3061
8-03	4148
8-04	3502
8-05	5047
8-06	4609
8-07	5322
8-08	5641
8-09	4066

9-01	2833
9-02	2252
9-03	2478
9-04	4731
9-05	4147
9-06	3263
9-07	2559
9-08	3562
9-09	2579

10-01	1988
10-02	2543
10-03	1624
10-04	3243
10-05	3167
10-06	4128
10-07	6013
10-08	1844
10-09	2030

11-01	2461
11-02	2420
11-03	3002
11-04	1873
11-05	2342
11-06	1901
11-07	2761
11-08	2602
11-09	2380

Week 12





# Top Tutor Group for each House



7.1



7.3



8.6



8.8





**MESSAGE  
FROM ART!  
WE NEED ANY OLD  
MAGAZINES FOR AN  
UPCOMING ART  
PROJECT! PLEASE DROP  
THEM INTO RECEPTION IF  
YOU HAVE ANY.**



**GOT BOOKS AT HOME YOU DON'T READ  
ANYMORE?**

**CONSIDER DONATING THEM TO THE LIBRARY!**



**PLEASE BRING ANY UNWANTED BOOKS TO MISS WHITFORD IN THE LIBRARY!**

FOLLOW OUR INSTAGRAM ACCOUNTS TO SEE THE WONDERFUL WORK  
CREATED BY THE TALENTED STUDENTS HERE AT CHARLTON!

Follow



@CHARLTONSCHOOLGEO

@CHARLTONSCHOOLEXPRESSIVEARTS

@CHARLTONSCHOOLMEDIA

@CHARLTONSCHOOLPE

@CHARLTONSCHOOLART

@CHARLTONSCHOOLREVISION





CHARLTON SCHOOL TECHNOLOGY DEPARTMENT INVITES YOU TO:

# CATERING CLUB FOR YEAR 9

TC7 EVERY WEDNESDAY  
FROM 3.10-4.10

THIS CLUB IS TO A COOKING CLUB WHERE YOU WILL  
MAKE A RANGE OF SWEET AND SAVOURY ITEMS.

SIGN UP SHEET WILL GO UP OUTSIDE TC7 ON  
THURSDAYS THE WEEK BEFORE- MUST SIGN UP AS  
PLACES ARE LIMITED.





# WOMEN'S Empowerment Group



Dates to be confirmed  
Location: DR1



"I want every girl to know that her voice can change the world." - Malala Yousafzai



# Pickleball Club

On Thursdays Week 1 with  
Miss Dubocquet  
3:10-4:10





The background of the poster is a light cream color, decorated with various colorful illustrations of craft supplies. In the top left, there are two paintbrushes with yellow handles and brown bristles. Below them is a small purple heart and a blue rectangular object. To the right of the brushes is a spool of green thread. In the top right, there is a purple jar and a white box with yellow and green circular patterns. On the right side, there are three markers in blue, red, and green. At the bottom left, there is a large brown artist's palette with several colored paint spots (blue, yellow, green, purple, red). At the bottom right, there is a small green Christmas tree with yellow lights and red ornaments, next to a red gift box with a white bow. The main title 'CREATIVE CRAFT CLUB' is written in large, bubbly, light green letters with a thick pink outline, arched across the top of the poster.

# CREATIVE CRAFT CLUB

**FRIDAYS IN TC4!**

**SIGN UP SHEETS OUTSIDE TC4,  
PLEASE ADD YOUR NAMES  
EVERY WEEK!**

**THE CRAFT THEME IS:**

 **CHRISTMAS CRAFT!**

**LIMITED TO  
15 SPACES!!!**





# **Dance Company Rehearsals**

**Every Wednesday after  
school in the Main Hall**

**3:10-4:10PM**

# CHOIR!

Wednesdays  
3:10-4:10pm







# **KS3 Dance Club**

**Tuesdays  
3:10-4:10pm**





# ART CLUB

EVERY TUESDAY  
AFTERSCHOOL IN AR1  
3:10PM - 4:10PM  
YEARS 7-9





# **HOMEWORK CLUB!**

**Tuesday and Wednesday  
after school in NU4!**



# SOCIAL CLUB!

Every Thursday  
in NU4

INVITE  
ONLY!





Promoting  
Non-Fiction  
Reading



# COMING SOON

WinterFest  
Continues!



Human Rights  
Day



# After School/Lunch Extra Curricular Activities

Club / Activity / Term	Day and Times	Location	Available to the following year groups					Additional Information e.g. equipment needed etc.
			7	8	9	10	11	
Stem Club	Monday 3:10pm to 4:10pm	SC7	✓	✓				This club is invite only.
Bridge Homework Club	Tuesday 3:10pm to 4:10pm	NU4	✓	✓	✓	✓	✓	
Library Access	Monday to Thursday 3:10pm to 4:00pm Friday 3:10-3:30pm	Library	✓	✓	✓	✓	✓	
Diversity LGBTQ+ CLUB	Monday 3:10pm to 4:10pm Week 2 Only	MA5	✓	✓	✓	✓	✓	
D of E - Mrs Bird	Monday 3:10pm to 4:10pm	Main Hall			✓			Usually from Feb to July. Please see Mrs Bird
Bridge Social Club	Wednesday & Thursday 3:10 pm to 4:10 pm	NU4	✓	✓	✓	✓	✓	By invitation only
MFL Club	Thursday 3:10pm to 4:10pm Week 2 Only	MFL5	✓	✓	✓	✓	✓	
Creative Craft – Mrs Turner	To be confirmed	TC4	✓	✓	✓	✓	✓	This club will be starting in October.
Strategy Games Club & Chess Club – Mr Millar	Tuesday 3:10pm to 4:10pm	PE1	✓	✓	✓	✓	✓	You can bring your own cards if you wish.
Dungeon and Dragons Club	Monday 3:10 - 4:10pm	PE1	✓	✓	✓	✓	✓	
KS3 Art Club	Tuesday 3:10 - 4:10pm	AR1	✓	✓	✓			
KS4 Art Club	Thursday 3:10 - 4:10pm	AR1				✓	✓	
Year 11 Study Zone	Everyday 3:10 - 4:10pm	TBC					✓	
Maths Homework Club	Wednesday 3:10 - 4:10pm	MA7	✓	✓	✓	✓	✓	
UNICEF Project	Tuesday 3:10 - 4:10pm Week 2 ONLY	HU5			✓	✓	✓	Invite only

⇒ ⇒ 3:10pm-4:10pm



# Expressive Arts Extra Curricular Activities

	ART	DRAMA	DANCE	MUSIC
MONDAY	<u><b>School Show Principal Rehearsals</b></u> Monday rehearsals will need to be attended by anyone who has a principal role in the school production. If you are unsure whether this applies to you, please check with one of the Expressive Arts teachers. <b>Time: 3:10-4:10</b> <b>Location: Main Hall/DRI</b> <b>Teacher: Expressive Arts Department</b>		<u><b>Street Dance - TBC</b></u> Entry by audition, open to all if you have an interest to Dance come along and audition. Led by professional Street Dance choreographer and Dancer Abbie. <b>Time: 3:10-4:10</b> <b>Location: DRI/MUI</b> <b>Teacher: Abbie</b>	
TUESDAY	<u><b>Charlton Art Club</b></u> Open to any KS3 students with an interest in Art. Led by our talented Arts Ambassadors. <b>Time: 3:10-4:10</b> <b>Location: ARI</b> <b>Teacher: Arts Ambassadors</b>		<u><b>KS3 Dance Club</b></u> Open to any KS3 students with an interest in dance. Led by our talented Arts Ambassadors. <b>Time: 3:10-4:10</b> <b>Location: Main Hall</b> <b>Teacher: Arts Ambassadors</b>	<u><b>Rock School</b></u> Bring your guitar, drumsticks or voice and be part of a rock band. Welcome to all levels and abilities but limited places are available – please speak to Mrs. Crampsie if interested. <b>Time: 3:10-4:10</b> <b>Location: MUI/Practice Rooms</b> <b>Teacher: D Wooley/ S Delves</b>
WEDNESDAY			<u><b>Dance Company</b></u> For students with an interest in dance. It will be by invitation only and auditions. <b>Time: 3:10-4:10</b> <b>Location: Main Hall</b> <b>Teacher: Mrs Wellings</b>	<u><b>Charlton Choir</b></u> Open to all year groups and abilities – singing is proven to help with stress, confidence, improve memory and allows you to express yourself and build a sense of community. I hope to see you there! <b>Time: Location: 3:10-4:10</b> <b>MUI</b> <b>Teacher: Mr Allen</b>
THURSDAY		<u><b>School Show – Full Cast Rehearsals</b></u> Rehearsals will need to be attended by everyone who is in the show, including the backstage and technical teams – set and costume designers must attend the meeting in ARI.  Speak to Mrs Crampsie if you would like to take part in the show and have not already signed up. Please check the cast list outside MUI/DRI if you are unsure of your role.  <b>Time 3:10-4:10</b> <b>Location: Main Hall</b> <b>Teacher: Expressive Arts Department</b>		
FRIDAY				

⇒ ⇒ **3:10pm-4:10pm**

# PE Extra Curricular Activities

	MAIN HALL / FITNESS SUITE	SPORTS HALL	FIELD	TENNIS COURTS
MONDAY	<u>After School</u> <b>Cambridge National / GCSE-</b> catch up – PEI	<u>After School</u> <b>Badminton</b> All Years Ms Byrne	<u>After School</u>	<u>After school</u>
TUESDAY	Staff Meetings <u>After School</u>	Staff Meetings <u>After School</u> <b>Basketball</b> KS4 Mr Thomas	Staff Meetings <u>After School</u>	Staff Meetings <u>After School</u>
WEDNESDAY	<u>After school</u> <b>Staff Fitness</b> Body Pump	<u>After School</u> <b>Netball</b> All years Mrs Johnson	<u>After School</u> <b>Boys Football</b> <b>Year 9,10 &amp; 11 Boys</b> Mr Jones / Mr Lawton / Mr Thomas  <b>Year 7 and 8 Boys</b> Mr Jones  <b>Girls Football</b> All Years Ms Byrne	<u>After School</u>
THURSDAY	<u>After School</u> <b>Staff Fitness</b> Body Pump	<u>After School</u> <b>Girls Indoor cricket</b> Miss Fozzard All Years	<u>After School</u> <b>Rugby</b> Boys all years Mr Lawton	<u>After School</u>
FRIDAY	<u>After School</u> <b>Fitness / Weight Training</b> All Years Boys & Girls Mr Thomas	<u>After School</u> <b>Basketball</b> KS3 Mr Thomas	<u>After School</u> <b>Girls rugby</b> All years Miss Fozzard and Miss Morris	<u>After School</u> <b>Cambridge National / GCSE-</b> catch up – PEI

⇒ ⇒ 3:10pm-4:10pm