



Student Bulletin



Calendar Events

Monday	Tuesday	Wednesday	Thursday	Friday
<u>Week 2</u> 24th – 28th YEAR 11 Options Week!		Blue Skies Year 10 Collins Aerospace/SAFRAN Wolverhampton	History Trip London	History Trip London

Sports Fixtures

DATE	SPORT	RETURN	LOCATION
WED	LCT Yr9/10/11 Swimming Gala BYC	14:30	AWAY
WED	District Cup Football Yr8 Football MJO	16:00	HOME
WED	Yr 10 Boys VS Mary Webb	16:30	AWAY
THURS	Yr 7/8 Winter Netball League	17:15	AWAY

Week Commencing 24/11/25

TUESDAY 25TH – DAY OF THE COVENANT Day of the Covenant is a festival observed to commemorate Bahá'u'lláh's appointment of His son, Abdu'l-Bahá, as his successor.

TUESDAY 25TH – INTERNATIONAL DAY FOR THE ELIMINATION OF VIOLENCE AGAINST WOMEN The International Day for the Elimination of Violence Against Women is a day to raise awareness about gender-based violence and the urgent need to end violence against women and girls worldwide.

WEDNESDAY 26TH – NATIONAL CAKE DAY National Cake Day is a fun day dedicated to all things cake! It's a celebration of one of the most beloved desserts in the world.

WEDNESDAY 26TH – WORLD SUSTAINABLE TRANSPORT DAY Raising awareness about the importance of sustainable transport in reducing carbon emissions and combating climate change. Why not think about more sustainable ways we could travel to school!

FRIDAY 28TH – BUY NOTHING DAY On the fourth Friday of November, Buy Nothing Day promotes sustainability and anti-consumerism.

Reminders and Assembly Rota

Please remember
to follow the
one way system
around school

Face to Face or Virtual

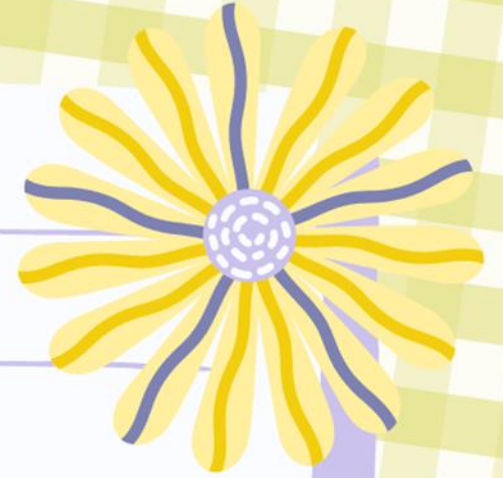
Mon	Year 7 Rugby Assembly		Face to Face
Tues	Year 8	WAP	Face to Face
Wed	Year 9	WAP	Face to Face
Thur	Year 10	WAP	Face to Face
Fri	Year 11	WAP	Face to Face

This week is:



Timetable

Week 2



Classroom Entry & Exit Routines

How we enter a classroom:



Get to your class as quickly as possible.



Go straight into your classroom.
Do not line up or wait outside.



Greet your teacher positively:
'Good morning, Sir. How are you, Miss?'



Teacher checks uniform as you enter.
Uniform concerns are logged.



Students enter quietly in a
calm and purposeful manner.



Sit down and get equipment out straight away.



Begin the starter task in silence.

How we leave a classroom:

Pack your equipment away
when the teacher tells you.



Stand behind your chair.



Check your uniform
(blazer is on and shirt is tucked in).



You will not be allowed to leave
until your uniform is perfect.



You will be dismissed table by table in an
organised, calm and timely manner.



Uniform Reminders

Uniform concern logs can be viewed by parents by accessing the My Child at School website/app:

<https://www.mychildatschool.com/MCAS/MCSParentLogin>. The website/app can also be used to track House Points, sanctions (including C1's, C2's, BRR and Homework Concerns), your child's academic progress and key messages regarding attendance and attitude to learning. We strongly advise you gain access to this and review it regularly to enable you to work alongside us from home.

Please see key reminders regarding proper uniform below to help you and your child ensure they are meeting the schools' expectations and are able to wear their uniform with pride:

Boys

- Blazer and year group tie
- Pale blue shirt (Years 7 - 10)
- White shirt (Year 11)
- Plain black trousers (not jeans)
- Black/grey socks
- Navy V-neck pullover with school crest (Optional to be worn under the blazer)
- Plain black shoes (No trainers or canvas shoes)

Girls

- Blazer and year group tie
- Pale blue shirt - Revere collar is not allowed (Years 7 - 10)
- White shirt - Revere collar is not allowed (Year 11)
- Black tailored trousers (not skinny trousers or leggings, straight leg only), or Black knee length pleated skirt.
- Black or white socks or black tights
- Plain black flat walking shoes – Max. heel height 4cms. Max Sole 2cms
- Navy V-neck pullover with school crest (Optional to be worn under the blazer)
- Muslim girls may wear a navy-blue hijab and a navy blue kameez, abaya or maxi skirt with black trousers. Students are expected to wear a tie and blazer with their kameez, abaya or maxi.

Students should not wear hoodies or sweatshirts under their blazers at any time, including breaks or lunchtimes.

Uniform Bank

Take what you need, give what you can.



- Do you need help obtaining uniform?
- Do you wish to swap any items of uniform that are in good condition but no longer fit?

We have uniform and PE Kit available for a voluntary donation

**Please ask at Reception or email
reception@charlton.uk.com**

CHARLTON SCHOOL

*Providing an environment in which all students can succeed,
with learning at the heart of all we do.*

Please can you continue to send in any items of Uniform you no longer require, especially blazers, and if you would like to swap sizes, please pop in and ask for Mrs Kinsey or Miss Littleford, or visit Pastoral.



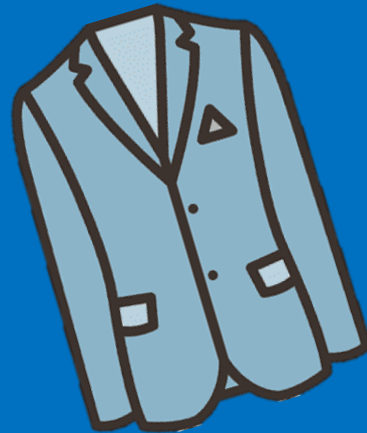
**** We are in need of shoes, trainers and PE Kit, as well as blazers and ties****

Please drop off any donations in reception.

Your contributions really do make a difference.

We are really grateful for your support,
Thankyou – Mrs Kinsey – Deputy DSL

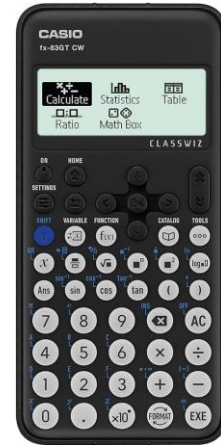
THANK YOU!



Remember your correct Uniform & Equipment

■ Essential Equipment

- 2x Pens
- 1x Pencil
- Red pen for Close The Gap work
- Ruler
- Scientific Calculator
- Protractor



Calculators are available to buy from the finance office in school for £11.

Charlton School Uniform Guide 2025/26

Full Policy can be found at www.charlton.uk.com



Shirts, Ties
& Blazers



Uniform Guide
2025/26

Hoodies or Zip up Jackets should not be worn instead of School blazers.



Skirt Length:
Knee length
pleated skirts only



Trousers:
Boys & Girls

No leggings, skinny or
tight trousers.
Straight leg only

Earrings:



Yes - Black leather style school shoes

Footwear:

No - Sports trainers
(air bubbles or canvas)



Reminder!



Please can parents/carers make sure
they name student clothes and bags.
When they are lost this makes it
possible to find them again!



Our British Values

Democracy



Rule of Law



Mutual Respect



Individual Liberty



Tolerance



Democracy

Democracy can be seen as a state of society characterised by equality of rights and privileges. It can also refer to our nation's electoral systems.

Rule of Law

It is expected that while different people may hold different views about what is 'right' and 'wrong', all people living in England are subject to its law.

Mutual Respect

The proper regard for an individual's dignity, which is reciprocated.

Individual Liberty

Individual liberty suggests the free exercise of rights generally seen as outside Government control.

Tolerance

A fair, objective, and permissive attitude to those whose faith, religion and beliefs may differ from one's own.

RESPECT

RESILIENCE

RESPONSIBILITY





The Charlton Virtue in Focus is:

Responsibility

RESPECT

RESILIENCE

RESPONSIBILITY



CANTEEN LUNCH MENU

WEEK 1	MONDAY	TUESDAY	WEDNESDAY	THURSDAY	FRIDAY
OPTION 1	MAC AND CHEESE WITH CRUNCHY TOPPING	BEEF CHILLI WITH RICE AND SOUR CREAM	PORK OR CHICKEN SAUSAGE WITH ROAST POTATOES & GRAVY	CHICKEN TIKKA CURRY WITH 50/50 RICE	CHIP SHOP FRIDAY WITH CHIPS AND GARDEN PEAS
OPTION 2	QUORN & VEGETABLE CHOW MEIN	FALAFEL WRAPS WITH COUSCOUS AND MINT & YOGHURT DIP	VEGAN SAUSAGE WITH ROAST POTATOES & GRAVY	SWEET POTATO & CHICKPEA CURRY WITH 50/50 RICE	CHEESE & LEEK PASTA BAKE WITH CHIPS AND GARDEN PEAS
ON THE SIDE	VEGETABLES OF THE DAY	VEGETABLES OF THE DAY	VEGETABLES OF THE DAY	VEGETABLES OF THE DAY	VEGETABLES OF THE DAY
DESSERT OF THE DAY	SELECTION OF HOMEBAKES	SELECTION OF HOMEBAKES	HOT PUDDING & CUSTARD	SELECTION OF HOMEBAKES	SELECTION OF HOMEBAKES

ALSO AVAILABLE:
SOUP OF THE DAY
FILLED JACKET POTATOES

CHECK OUT...
OUR HOT AND COLD
GRAB & GO SECTION

ALLERGIES
PLEASE SPEAK TO A MEMBER OF STAFF IF YOU HAVE ANY ALLERGY AND NEED TO KNOW WHAT'S INSIDE OUR FOOD DISHES, THEY WILL ADVISE YOU OF THE AVAILABLE CHOICES.

Look out for a purple lanyard



These are Charlton's main DSL's:

If you see a member of staff wearing a purple lanyard, this means they are a designated safeguarding lead.

They have had specific training for dealing with any safeguarding matters that you may have.

If you have any worries or concerns do not hesitate to go to them to report any safeguarding concerns or for help and advice.



Sparx Reader

YEAR 7



1) Elijah E (Elijah the Legend) 2,997



2) Jacob K (Jacob the Strategist) 2,558



3) Qais S (Qais the CEO) 1,684

Sparx Reader

YEAR 8



1) Nnedinma O-E (Nnedinma the Starfire) 2,625



2) Jacob K (Jacob the Pianist) 1,070



3) Ben G (Ben the Mastermind) 1,507

Sparx Reader

YEAR 9



1) Laya B (Laya the Icon) 1,536



2) Ariana N (Ariana the Artist) 1,509



3) Nobrianna B (Nobrianna the Rebel) 1,440

Sparx Reader

YEAR 10



1) Ben S (Ben the Peacemaker) 1,283



2) William P (William the Ranger) 863



3) Ellie M (Ellie the Icon) 758

Sparx Reader

YEAR 11



1) Kyran C (Kyran the Genius) 1,255



2) Anuhas S (Anuhas the Knight) 717



3) Sandiv W (Sandiv the One and Only) 635



Inclusion Team Shoutouts!

Year 7

Annie F
Kailen M
Alyssa B

Year 8

Year 9

Jamie G

Year 10

Lola W

Year 11

Rhi G
Carter H



Charlton Theatre Company

THERE WILL BE A SHORT MEETING IN THE DRAMA STUDIO ON
MONDAY 24TH NOVEMBER (3:10 - 3:40)

FOR STUDENTS INTERESTED IN OUR EXCITING NEW THEATRE
COMPANY!

YOU DONT NEED TO PREPARE ANYTHING, JUST BRING YOUR
ENTHUSIASM!

**ANY QUESTIONS, PLEASE SEE MR HUGHES IN THE EXPRESSIVE
ARTS DEPARTMENT**



DESIGN A BOOKMARK COMPETITION WINNERS!

THANK YOU
FOR ALL
YOUR
ENTRIES!



- 1) KACIE H (9.9)
- 2) ABDULLAH C (9.5)
- 3) ALISHA P (8.5)
- 4) JIM T (7.3)
- 5) ANGEL T (9.5)

WELL DONE!



PLEASE COLLECT YOUR £5 BOOK VOUCHER FROM THE LIBRARY!



Residential History Trip **MEETING**

THERE IS A COMPULSORY MEETING IN THE
HUMANITIES OPEN AREA DURING
FORM TIME ON TUESDAY 25TH NOVEMBER
AT 8:50AM.

STUDENTS ON THE RESIDENTIAL
TRIP MUST ATTEND THIS MEETING!

2026 SPANISH TRIP! Valencia



gracias

**A PLACE HAS BECOME AVAILABLE FOR THE
YEAR 11/10 SPANISH TRIP TO VALENCIA!
PLEASE SEE MRS FOY IN
MFL3 ASAP
IF YOU WOULD LIKE A LETTER!**



BOOK FAIR

READ THE BOOKS EVERYONES TALKING ABOUT!

EARN
FREE
BOOKS
FOR OUR
SCHOOL!

MONDAY 24TH - WEDNESDAY 26TH

NOVEMBER!
IN THE LIBRARY!

PURCHASES CAN BE MADE AT
LUNCH TIME AND AFTERSCHOOL!

CASH ONLY!





WELL DONE



YEAR 11



FOR COMPLETING YOUR MOCK EXAMS!

YOU'VE ALL SHOWN FANTASTIC RESILIENCE

AND WORKED REALLY HARD!

YOU SMASHED IT!





Year 10 Work Experience

18th to 22nd May 2026



DEADLINES:

In County:
27th March 2026

Out of County:
13th February 2026

Please complete
your
Employer
forms!





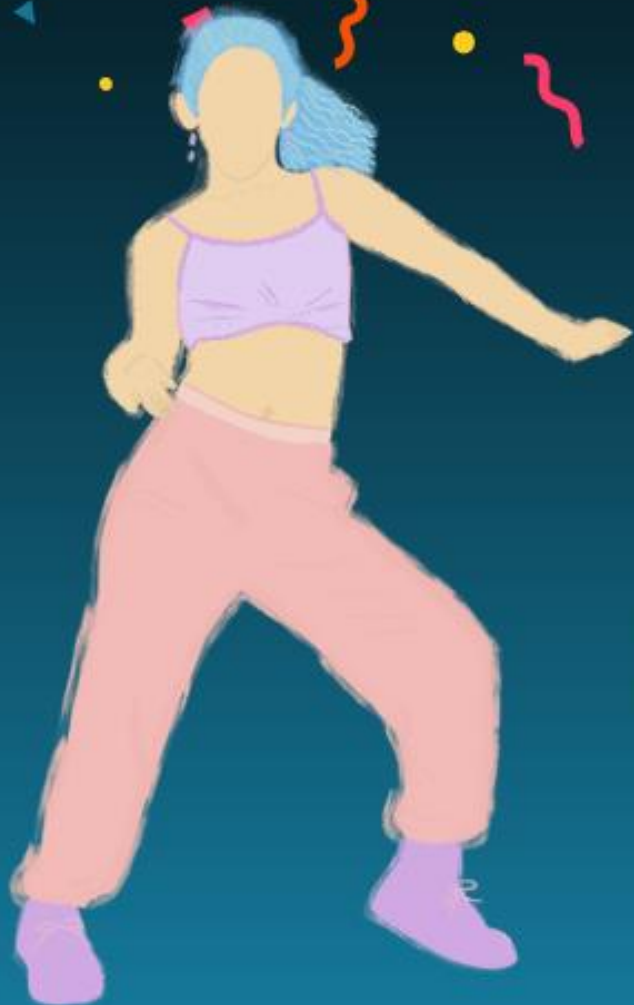
DANCE SHOWCASE

THURSDAY 4TH

DECEMBER- 6-8PM

**TICKETS ON SALE FROM
STUDENT FINANCE**

£3 EACH



WINTERFEST BEGINS!!!

CHRISTMAS CARD DESIGN COMPETITION!

DESIGN YOUR OWN CHRISTMAS
CARDS TO BE SOLD!



ALL MONEY RAISED WILL GO TO
CHARITY!



SUBMIT YOUR DESIGN TO MISS THOMAS
IN PASTORAL!



Barcelona TRIP JUNE 27



If you are studying or want to take GCSE Art and/or GCSE Textiles (Current Year 9s & 10s Only) and haven't already done so please get a trip letter from AR2, Miss Gibb for our Barcelona Trip in June 2027.

We only have a couple of places left!



bonjour ♡

Paris Trip 2026

OPEN TO YEAR 9 AND 10
PLEASE SEE MRS FOY FOR A LETTER IF YOU ARE
INTERESTED IN GOING!





WINTERFEST BEGINS!!!

GIFT DONATIONS!



**WE'RE LOOKING TO DONATE GIFTS
TO THOSE LESS FORTUNATE
THIS CHRISTMAS PERIOD!
IF YOU WOULD LIKE TO
TAKE PART,
PLEASE WRAP UP YOUR GIFT AND LABEL THEM
(EG BOY,12 OR GIRL,7)**

**ALL DONATIONS
GO TO
TELFORD
CRISIS CENTRE**

**ALL GIFTS TO BE GIVEN TO
STUDENT SERVICES!**



STRANGE-SAGAS-R

WHERE MYSTERY MEETS CREATIVITY

WRITE YOUR OWN "MINI-SAGA" STORY
FOR THE CHANCE TO WIN

£100 AMAZON GIFT CARD

AND A TROPHY!!!

YOUR STORY WILL ALSO BE PUBLISHED IN THE
YOUNG WRITERS BOOK,
AVAILABLE IN THE LIBRARY!

FOR MORE INFORMATION, SEE MISS
WHITFORD IN THE LIBRARY!

100
WORD
LIMIT!!!

CLOSING
DATE:
10TH
DECEMBER!



Make Fabric Christmas Ornaments with Miss Gibb

Every Wednesday in AR2 from 12th November – 10th December
Sign up sheet will be outside AR2 on Monday 3rd November



WINTERFEST BEGINS!!!

SELECTION BOX DONATIONS!

WE'RE LOOKING TO DONATE
SELECTION BOXES
TO THOSE LESS FORTUNATE!

IF YOU'D LIKE TO DONATE,
PLEASE GIVE YOUR BOX IN TO
STUDENT SERVICES!

ALL DONATIONS
GO TO
TELFORD
CRISIS CENTRE!





SCHOOL NURSE DROP IN MONDAY AND WEDNESDAY WHAT WE CAN OFFER YOU:

A SCHOOL NURSE WILL ATTEND YOUR SCHOOL WEEKLY FOR HEALTH DROP-IN SESSIONS, THESE ARE A CONFIDENTIAL PROVIDING ADVICE, SUPPORT, AND SIGNPOSTING FOR PHYSICAL AND EMOTIONAL HEALTH.

A SCHOOL NURSE CAN PROVIDE YOU WITH A C-CARD FOR FREE CONDOMS, SEXUAL HEALTH ADVICE AND SUPPORT

OUR EMOTIONAL HEALTH AND WELLBEING LEAD NURSE ALSO RUNS A CLINIC FOR PARENTS EVERY MONDAY, 9-2PM AT SUTTON HILL MEDICAL PRACTICE (ONLINE APPOINTMENTS ALSO AVAILABLE UPON REQUEST ON 0333 358 3328).

YOUNG PEOPLE CAN CALL THE HEALTH FOR TEENS LINE TO CONFIDENTIALLY SEEK SUPPORT ON 07520619051

**ASK YOUR SCHOOL TO REFER IN OR SELF-REFER BY CALLING US ON
0333 358 3328**



theccard

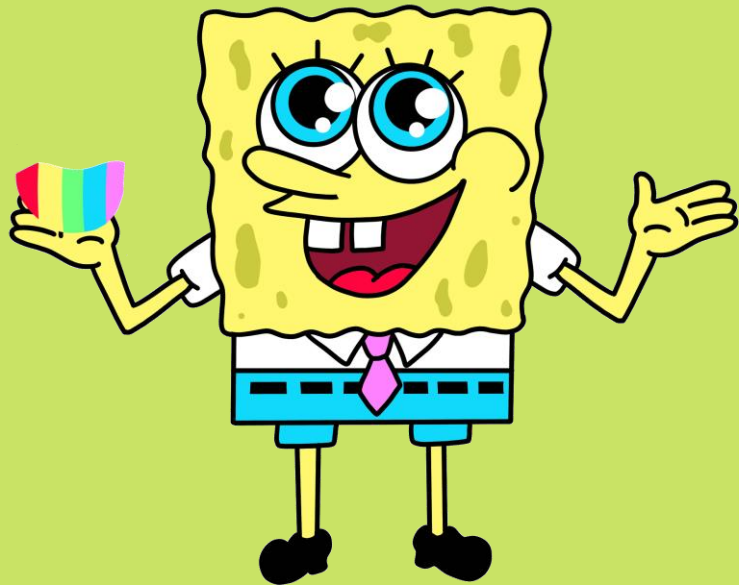
HEALTH FOR TEENS

**YOUNG
MiNDS
kooth**

HURRAH!

TOP ATTENDANCE

TOTAL



SINCE THE START OF TERM

97.49%

TUTOR GROUP

7.6





House Activities

HOUSE	POINTS
Birch	61190
Willow	59881
Hawthorn	60357
Sycamore	47124

House	Weekly Points
Willow	4674
Sycamore	3609
Birch	4602
Hawthorn	5259

Top house this week:
Birch



Cumulative Tutor Points so far this term:

7-01	3472
7-02	2795
7-03	5287
7-04	4949
7-05	2451
7-06	3533
7-07	2933
7-08	3134
7-09	3106

8-01	2392
8-02	2641
8-03	3533
8-04	3020
8-05	4759
8-06	3954
8-07	5001
8-08	5367
8-09	3729

9-01	2655
9-02	1966
9-03	2212
9-04	4479
9-05	3961
9-06	3131
9-07	2394
9-08	3367
9-09	2478

10-01	1825
10-02	2400
10-03	1497
10-04	2994
10-05	2766
10-06	3894
10-07	5429
10-08	1606
10-09	1858

11-01	2296
11-02	2130
11-03	2745
11-04	1764
11-05	2231
11-06	1734
11-07	2431
11-08	2456
11-09	2155

Week 11



Top Tutor Group for each House



7.1



7.3



8.6



8.8



**MESSAGE
FROM ART!
WE NEED ANY OLD
MAGAZINES FOR AN
UPCOMING ART
PROJECT! PLEASE DROP
THEM INTO RECEPTION IF
YOU HAVE ANY.**

**GOT BOOKS AT HOME YOU DON'T READ
ANYMORE?**

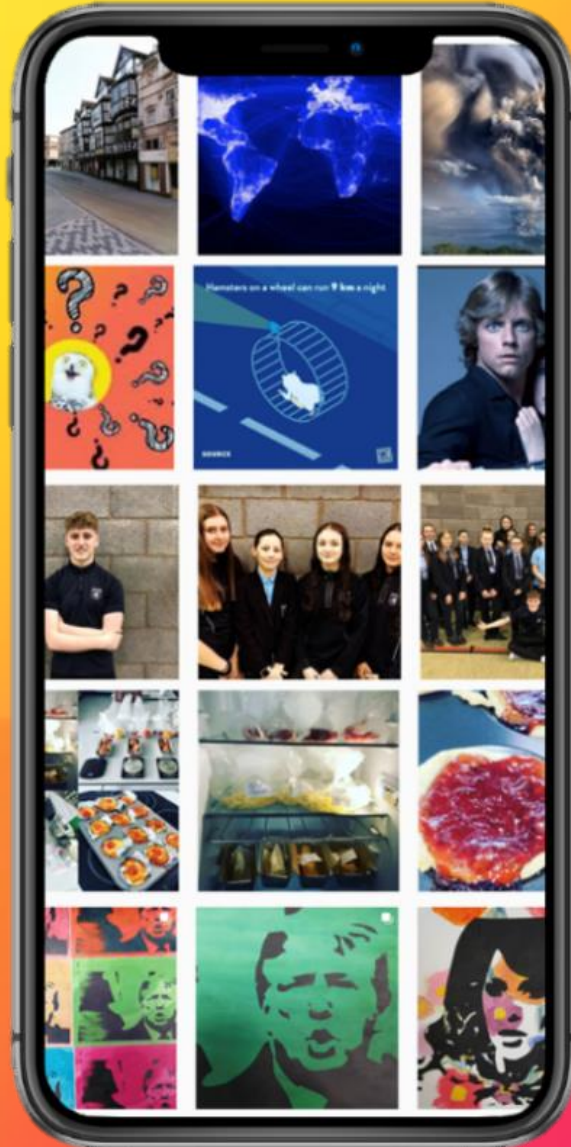
CONSIDER DONATING THEM TO THE LIBRARY!



PLEASE BRING ANY UNWANTED BOOKS TO MISS WHITFORD IN THE LIBRARY!

FOLLOW OUR INSTAGRAM ACCOUNTS TO SEE THE WONDERFUL WORK
CREATED BY THE TALENTED STUDENTS HERE AT CHARLTON!

Follow



@CHARLTONSCHOOLGEO

@CHARLTONSCHOOLEXPRESSIVEARTS

@CHARLTONSCHOOLMEDIA

@CHARLTONSCHOOLPE

@CHARLTONSCHOOLART

@CHARLTONSCHOOLREVISION



CHARLTON SCHOOL TECHNOLOGY DEPARTMENT INVITES YOU TO:

CATERING CLUB FOR YEAR 9

TC7 EVERY WEDNESDAY
FROM 3.10-4.10

THIS CLUB IS TO A COOKING CLUB WHERE YOU WILL
MAKE A RANGE OF SWEET AND SAVOURY ITEMS.

SIGN UP SHEET WILL GO UP OUTSIDE TC7 ON
THURSDAYS THE WEEK BEFORE- MUST SIGN UP AS
PLACES ARE LIMITED.



WOMEN'S Empowerment Group



Dates to be confirmed
Location: DR1



"I want every girl to know that her voice can change the world." - Malala Yousafzai

Pickleball Club

On Thursdays Week 1 with
Miss Dubocquet
3:10-4:10



The background of the poster is a light cream color, decorated with various colorful illustrations of craft supplies. In the top left, there are two paintbrushes with yellow handles and brown bristles. Below them is a small purple heart and a blue rectangular object. To the right of the brushes is a spool of green thread. In the top right, there is a purple jar and a white box with colorful patterns. On the right side, there are three markers in blue, red, and green. At the bottom left, there is a large brown artist's palette with several colored paint spots (blue, yellow, green, purple, red). At the bottom right, there is a small green Christmas tree with yellow lights and red ornaments, sitting on a red base. The main title 'CREATIVE CRAFT CLUB' is written in large, bubbly, light green letters with a thick pink outline, arched across the top of the poster.

CREATIVE CRAFT CLUB

FRIDAYS IN TC4!

**SIGN UP SHEETS OUTSIDE TC4,
PLEASE ADD YOUR NAMES
EVERY WEEK!**

THE CRAFT THEME IS:

 **CHRISTMAS CRAFT!**

**LIMITED TO
15 SPACES!!!**



Dance Company Rehearsals

**Every Wednesday after
school in the Main Hall**

3:10-4:10PM

CHOIR!

Wednesdays
3:10-4:10pm





KS3 Dance Club

**Tuesdays
3:10-4:10pm**





ART CLUB

EVERY TUESDAY
AFTERSCHOOL IN AR1
3:10PM - 4:10PM
YEARS 7-9



HOMEWORK CLUB!

**Tuesday and Wednesday
after school in NU4!**



SOCIAL CLUB!

Every Thursday
in NU4

INVITE
ONLY!



COMING SOON

Promoting
Non-Fiction
Reading



Human
Rights Day



WinterFest
Continues!



Christmas
Poetry
Competition



After School/Lunch Extra Curricular Activities

Club / Activity / Term	Day and Times	Location	Available to the following year groups					Additional Information e.g. equipment needed etc.
			7	8	9	10	11	
Stem Club	Monday 3:10pm to 4:10pm	SC7	✓	✓				This club is invite only.
Bridge Homework Club	Tuesday 3:10pm to 4:10pm	NU4	✓	✓	✓	✓	✓	
Library Access	Monday to Thursday 3:10pm to 4:00pm Friday 3:10-3:30pm	Library	✓	✓	✓	✓	✓	
Diversity LGBTQ+ CLUB	Monday 3:10pm to 4:10pm Week 2 Only	MA5	✓	✓	✓	✓	✓	
D of E - Mrs Bird	Monday 3:10pm to 4:10pm	Main Hall			✓			Usually from Feb to July. Please see Mrs Bird
Bridge Social Club	Wednesday & Thursday 3:10 pm to 4:10 pm	NU4	✓	✓	✓	✓	✓	By invitation only
MFL Club	Thursday 3:10pm to 4:10pm Week 2 Only	MFL5	✓	✓	✓	✓	✓	
Creative Craft – Mrs Turner	To be confirmed	TC4	✓	✓	✓	✓	✓	This club will be starting in October.
Strategy Games Club & Chess Club – Mr Millar	Tuesday 3:10pm to 4:10pm	PE1	✓	✓	✓	✓	✓	You can bring your own cards if you wish.
Dungeon and Dragons Club	Monday 3:10 - 4:10pm	PE1	✓	✓	✓	✓	✓	
KS3 Art Club	Tuesday 3:10 - 4:10pm	AR1	✓	✓	✓			
KS4 Art Club	Thursday 3:10 - 4:10pm	AR1				✓	✓	
Year 11 Study Zone	Everyday 3:10 - 4:10pm	TBC					✓	
Maths Homework Club	Wednesday 3:10 - 4:10pm	MA7	✓	✓	✓	✓	✓	
UNICEF Project	Tuesday 3:10 - 4:10pm Week 2 ONLY	HU5			✓	✓	✓	Invite only

⇒ ⇒ 3:10pm-4:10pm

Expressive Arts Extra Curricular Activities

	ART	DRAMA	DANCE	MUSIC
MONDAY	<u>School Show Principal Rehearsals</u> Monday rehearsals will need to be attended by anyone who has a principal role in the school production. If you are unsure whether this applies to you, please check with one of the Expressive Arts teachers. Time: 3:10-4:10 Location: Main Hall/DRI Teacher: Expressive Arts Department		<u>Street Dance - TBC</u> Entry by audition, open to all if you have an interest to Dance come along and audition. Led by professional Street Dance choreographer and Dancer Abbie. Time: 3:10-4:10 Location: DRI/MUI Teacher: Abbie	
TUESDAY	<u>Charlton Art Club</u> Open to any KS3 students with an interest in Art. Led by our talented Arts Ambassadors. Time: 3:10-4:10 Location: ARI Teacher: Arts Ambassadors		<u>KS3 Dance Club</u> Open to any KS3 students with an interest in dance. Led by our talented Arts Ambassadors. Time: 3:10-4:10 Location: Main Hall Teacher: Arts Ambassadors	<u>Rock School</u> Bring your guitar, drumsticks or voice and be part of a rock band. Welcome to all levels and abilities but limited places are available – please speak to Mrs. Crampsie if interested. Time: 3:10-4:10 Location: MUI/Practice Rooms Teacher: D Wooley/ S Delves
WEDNESDAY			<u>Dance Company</u> For students with an interest in dance. It will be by invitation only and auditions. Time: 3:10-4:10 Location: Main Hall Teacher: Mrs Wellings	<u>Charlton Choir</u> Open to all year groups and abilities – singing is proven to help with stress, confidence, improve memory and allows you to express yourself and build a sense of community. I hope to see you there! Time: Location: 3:10-4:10 MUI Teacher: Mr Allen
THURSDAY		<u>School Show – Full Cast Rehearsals</u> Rehearsals will need to be attended by everyone who is in the show, including the backstage and technical teams – set and costume designers must attend the meeting in ARI. Speak to Mrs Crampsie if you would like to take part in the show and have not already signed up. Please check the cast list outside MUI/DRI if you are unsure of your role. Time 3:10-4:10 Location: Main Hall Teacher: Expressive Arts Department		
FRIDAY				

⇒ ⇒ 3:10pm-4:10pm

PE Extra Curricular Activities

	MAIN HALL / FITNESS SUITE	SPORTS HALL	FIELD	TENNIS COURTS
MONDAY	<u>After School</u> Cambridge National / GCSE- catch up – PEI	<u>After School</u> Badminton All Years Ms Byrne	<u>After School</u>	<u>After school</u>
TUESDAY	Staff Meetings <u>After School</u>	Staff Meetings <u>After School</u> Basketball KS4 Mr Thomas	Staff Meetings <u>After School</u>	Staff Meetings <u>After School</u>
WEDNESDAY	<u>After school</u> Staff Fitness Body Pump	<u>After School</u> Netball All years Mrs Johnson	<u>After School</u> Boys Football Year 9,10 & 11 Boys Mr Jones / Mr Lawton / Mr Thomas Year 7 and 8 Boys Mr Jones Girls Football All Years Ms Byrne	<u>After School</u>
THURSDAY	<u>After School</u> Staff Fitness Body Pump	<u>After School</u> Girls Indoor cricket Miss Fozzard All Years	<u>After School</u> Rugby Boys all years Mr Lawton	<u>After School</u>
FRIDAY	<u>After School</u> Fitness / Weight Training All Years Boys & Girls Mr Thomas	<u>After School</u> Basketball KS3 Mr Thomas	<u>After School</u> Girls rugby All years Miss Fozzard and Miss Morris	<u>After School</u> Cambridge National / GCSE- catch up – PEI

⇒ ⇒ 3:10pm-4:10pm