



# Student Bulletin



## Calendar Events

Monday	Tuesday	Wednesday	Thursday	Friday
Week 2			Y10 London Trip	

## Sports Fixtures

DATE	SPORT	RETURN	LOCATION

## Week Commencing 08/09/25

**Monday - 9/8/25 - INTERNATIONAL LITERACY DAY**

*Call to action for universal literacy.*

## Reminders and Assembly Rota

Please remember  
to follow the  
one way system  
around school

## Face to Face or Virtual

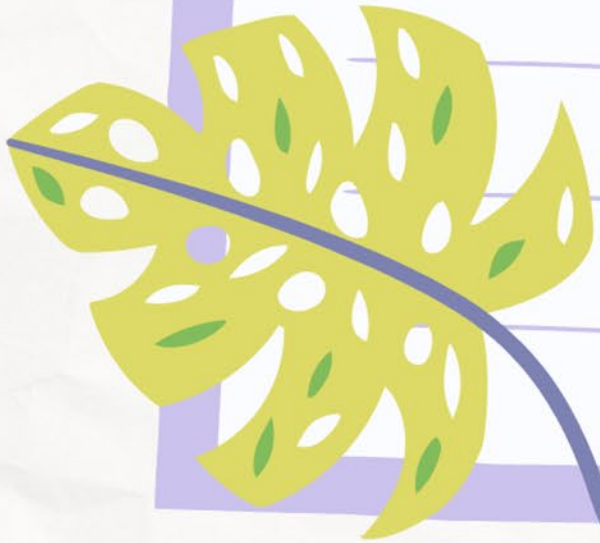
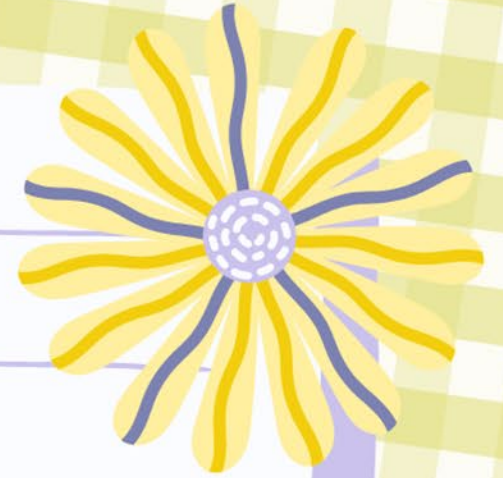
Mon	Year 7	VIA	Face To Face
Tues	Year 8	VIA	
Wed	Year 9	VIA	
Thur	Year 10	VIA	
Fri	Year 11	VIA	

*This week is:*



# **Timetable**

## **Week 2**





# Classroom Entry & Exit Routines

## How we enter a classroom:



Get to your class as quickly as possible.



Go straight into your classroom.  
Do not line up or wait outside.



Greet your teacher positively:  
'Good morning, Sir. How are you, Miss?'



Teacher checks uniform as you enter.  
Uniform concerns are logged.



Students enter quietly in a  
calm and purposeful manner.



Sit down and get equipment out straight away.



Begin the starter task in silence.

## How we leave a classroom:

Pack your equipment away  
when the teacher tells you.



Stand behind your chair.



Check your uniform  
(blazer is on and shirt is tucked in).



You will not be allowed to leave  
until your uniform is perfect.



You will be dismissed table by table in an  
organised, calm and timely manner.



# Uniform Reminders

Uniform concern logs can be viewed by parents by accessing the My Child at School website/app:

<https://www.mychildatschool.com/MCAS/MCSParentLogin>. The website/app can also be used to track House Points, sanctions (including C1's, C2's, BRR and Homework Concerns), your child's academic progress and key messages regarding attendance and attitude to learning. We strongly advise you gain access to this and review it regularly to enable you to work alongside us from home.

Please see key reminders regarding proper uniform below to help you and your child ensure they are meeting the schools' expectations and are able to wear their uniform with pride:

## **Boys**

- Blazer and year group tie
- Pale blue shirt (Years 7 - 10)
- White shirt (Year 11)
- Plain black trousers (not jeans)
- Black/grey socks
- Navy V-neck pullover with school crest (Optional to be worn under the blazer)
- Plain black shoes (No trainers or canvas shoes)

## **Girls**

- Blazer and year group tie
- Pale blue shirt - Revere collar is not allowed (Years 7 - 10)
- White shirt - Revere collar is not allowed (Year 11)
- Black tailored trousers (not skinny trousers or leggings, straight leg only), or Black knee length pleated skirt.
- Black or white socks or black tights
- Plain black flat walking shoes – Max. heel height 4cms. Max Sole 2cms
- Navy V-neck pullover with school crest (Optional to be worn under the blazer)
- Muslim girls may wear a navy-blue hijab and a navy blue kameez, abaya or maxi skirt with black trousers. Students are expected to wear a tie and blazer with their kameez, abaya or maxi.

**Students should not wear hoodies or sweatshirts under their blazers at any time, including breaks or lunchtimes.**



# Uniform Bank

*Take what you need, give what you can.*



- Do you need help obtaining uniform?
- Do you wish to swap any items of uniform that are in good condition but no longer fit?

**We have uniform and PE Kit available for a voluntary donation**

**Please ask at Reception or email [reception@charlton.uk.com](mailto:reception@charlton.uk.com)**

**CHARLTON SCHOOL**

*Providing an environment in which all students can succeed,  
with learning at the heart of all we do.*

Please can you continue to send in any items of Uniform you no longer require, especially blazers, and if you would like to swap sizes, please pop in and ask for Mrs Kinsey or Miss Littleford, or visit Pastoral.



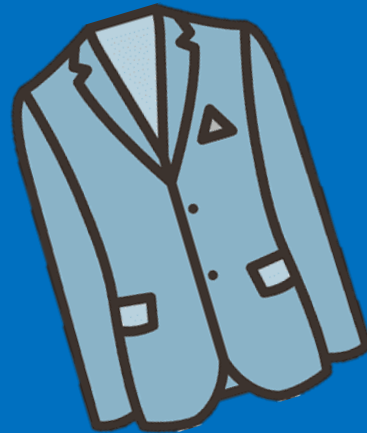
**\*\* We are in need of shoes, trainers and PE Kit, as well as blazers and ties\*\***

**Please drop off any donations in reception.**

Your contributions really do make a difference.

We are really grateful for your support,  
Thankyou – Mrs Kinsey – Deputy DSL

**THANK YOU!**



# Reminder!



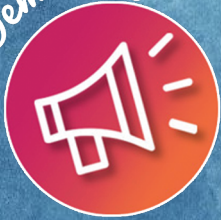
Please can parents/carers make sure  
they name student clothes and bags.  
When they are lost this makes it  
possible to find them again!





# Our British Values

Democracy



Rule of Law



Mutual Respect



Individual Liberty



Tolerance



Democracy

Democracy can be seen as a state of society characterised by equality of rights and privileges. It can also refer to our nation's electoral systems.

Rule of Law

It is expected that while different people may hold different views about what is 'right' and 'wrong', all people living in England are subject to its law.

Mutual Respect

The proper regard for an individual's dignity, which is reciprocated.

Individual Liberty

Individual liberty suggests the free exercise of rights generally seen as outside Government control.

Tolerance

A fair, objective, and permissive attitude to those whose faith, religion and beliefs may differ from one's own.

RESPECT

RESILIENCE

RESPONSIBILITY







The Charlton Virtue in Focus is:

# Compassion

RESPECT

RESILIENCE

RESPONSIBILITY





# CANTEEN LUNCH MENU

WEEK 2	MONDAY	TUESDAY	WEDNESDAY	THURSDAY	FRIDAY
OPTION 1	SWEET & SOUR VEGETABLES WITH POTATO WEDGES	BEEF LASAGNE WITH GARLIC BREAD AND SLAW	CHEF'S PIE OF THE DAY WITH NEW POTATOES	JERK CHICKEN WRAP WITH WEDGES & PINEAPPLE SLAW	CHIP SHOP FRIDAY SERVED WITH CHIPS, MUSHY PEAS AND GRAVY/CURRY SAUCE
OPTION 2	CRUNCHY VEGETABLE PASTA BAKE WITH GARLIC BREAD	VEGETABLE LASAGNE WITH GARLIC BREAD AND SLAW	LEEK, ONION & POTATO TRAY BAKE	CURRIED SQUASH & BUTTERBEAN STEW WITH RICE AND PEAS & SLAW	VEGETABLE BURGER WITH CHIPS
ON THE SIDE	VEGETABLES OF THE DAY	VEGETABLES OF THE DAY	VEGETABLES OF THE DAY	VEGETABLES OF THE DAY	VEGETABLES OF THE DAY
DESSERT OF THE DAY	SELECTION OF HOMEBAKES	SELECTION OF HOMEBAKES	HOT PUDDING & CUSTARD	HOT PUDDING & CUSTARD	SELECTION OF HOMEBAKES

ALSO AVAILABLE:  
SOUP OF THE DAY  
FILLED JACKET POTATOES

CHECK OUT...  
OUR HOT AND COLD  
GRAB & GO SECTION



ALLERGIES  
PLEASE SPEAK TO A MEMBER OF STAFF IF YOU HAVE ANY  
ALLERGY AND NEED TO KNOW WHAT'S INSIDE OUR FOOD  
DISHES, THEY WILL ADVISE YOU OF THE AVAILABLE CHOICES.

# Look out for a purple lanyard



## THESE ARE CHARLTON'S MAIN DSL'S:

If you see a member of staff wearing a purple lanyard, this means they are a designated safeguarding lead.

They have had specific training for dealing with any safeguarding matters that you may have.

If you have any worries or concerns do not hesitate to go to them to report any safeguarding concerns or for help and advice.







# Inclusion Team Shoutouts!

## Year 7

Jakub M

Jacob Z

Jack A

Harley P

## Year 8

Alex C

Zac C

## Year 9

## Year 10

Tristan S

Zack P

## Year 11

Jess T

Maddie B

Kieron R



# International Literacy Day

8<sup>th</sup> September 2025

The theme for 2025 is:  
'Promoting literacy in a  
digital era'



# London Trip

Any students attending the London trip on Thursday to come to the Humanities Open Area on Tuesday morning during form time to have a brief meeting. Attendance is compulsory.





# **SCHOOL NURSE DROP IN MONDAY AND WEDNESDAY WHAT WE CAN OFFER YOU:**

**A SCHOOL NURSE WILL ATTEND YOUR SCHOOL WEEKLY FOR HEALTH DROP-IN SESSIONS, THESE ARE A CONFIDENTIAL PROVIDING ADVICE, SUPPORT, AND SIGNPOSTING FOR PHYSICAL AND EMOTIONAL HEALTH.**

**A SCHOOL NURSE CAN PROVIDE YOU WITH A C-CARD FOR FREE CONDOMS, SEXUAL HEALTH ADVICE AND SUPPORT**

**OUR EMOTIONAL HEALTH AND WELLBEING LEAD NURSE ALSO RUNS A CLINIC FOR PARENTS EVERY MONDAY, 9-2PM AT SUTTON HILL MEDICAL PRACTICE (ONLINE APPOINTMENTS ALSO AVAILABLE UPON REQUEST ON 0333 358 3328).**

**YOUNG PEOPLE CAN CALL THE HEALTH FOR TEENS LINE TO CONFIDENTIALLY SEEK SUPPORT ON 07520619051**

**ASK YOUR SCHOOL TO REFER IN OR SELF-REFER BY CALLING US ON  
0333 358 3328**



theccard

**HEALTH FOR TEENS**

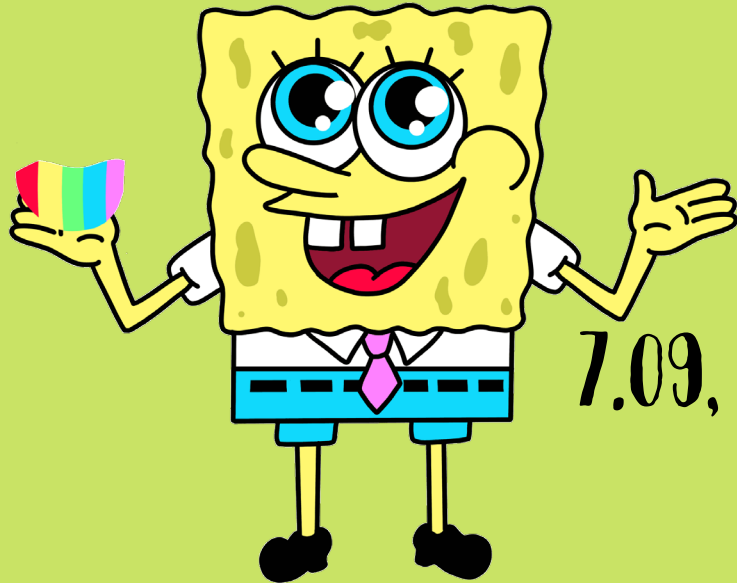
**YOUNG  
MiNDS  
kooth**



HURRAH!

TOP ATTENDANCE

TOTAL



SINCE THE START OF TERM

100%

TUTOR GROUP

7.09, 7.01, 7.02, 7.04, 9.03, 10.5 & 9.04







## House Activities

HOUSE	POINTS
Birch	1754
Willow	1841
Hawthorn	2153
Sycamore	1187

House	Weekly Points
Willow	1841
Sycamore	1187
Birch	1754
Hawthorn	2153

Top house this week:  
*Hawthorn*



# Cumulative Tutor Points so far this term:

7-01	336
7-02	176
7-03	504
7-04	484
7-05	172
7-06	262
7-07	362
7-08	318
7-09	298

8-01	49
8-02	94
8-03	51
8-04	35
8-05	101
8-06	175
8-07	201
8-08	109
8-09	110

9-01	44
9-02	26
9-03	60
9-04	244
9-05	164
9-06	109
9-07	52
9-08	152
9-09	108

10-01	126
10-02	57
10-03	66
10-04	76
10-05	122
10-06	219
10-07	406
10-08	110
10-09	64

11-01	96
11-02	169
11-03	140
11-04	115
11-05	111
11-06	107
11-07	168
11-08	179
11-09	124



**MESSAGE  
FROM ART!  
WE NEED ANY OLD  
MAGAZINES FOR AN  
UPCOMING ART  
PROJECT! PLEASE DROP  
THEM INTO RECPETION IF  
YOU HAVE ANY.**



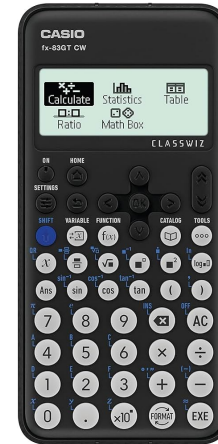
Follow



# Remember your correct Uniform & Equipment

## ■ Essential Equipment

- 2x Pens
- 1x Pencil
- Red pen for Close The Gap work
- Ruler
- Scientific Calculator
- Protractor



Calculators are available to buy from the finance office in school for £11.

## Charlton School Uniform Guide 2025/26

Full Policy can be found at [www.charlton.uk.com](http://www.charlton.uk.com)



Shirts, Ties  
& Blazers



Hoodies or Zip up Jackets should not be worn instead of School blazers.

Uniform Guide  
2025/26



Skirt Length:  
Knee length  
pleated skirts only



Trousers:  
Boys & Girls

No leggings, skinny or  
tight trousers.  
Straight leg only

Earrings:


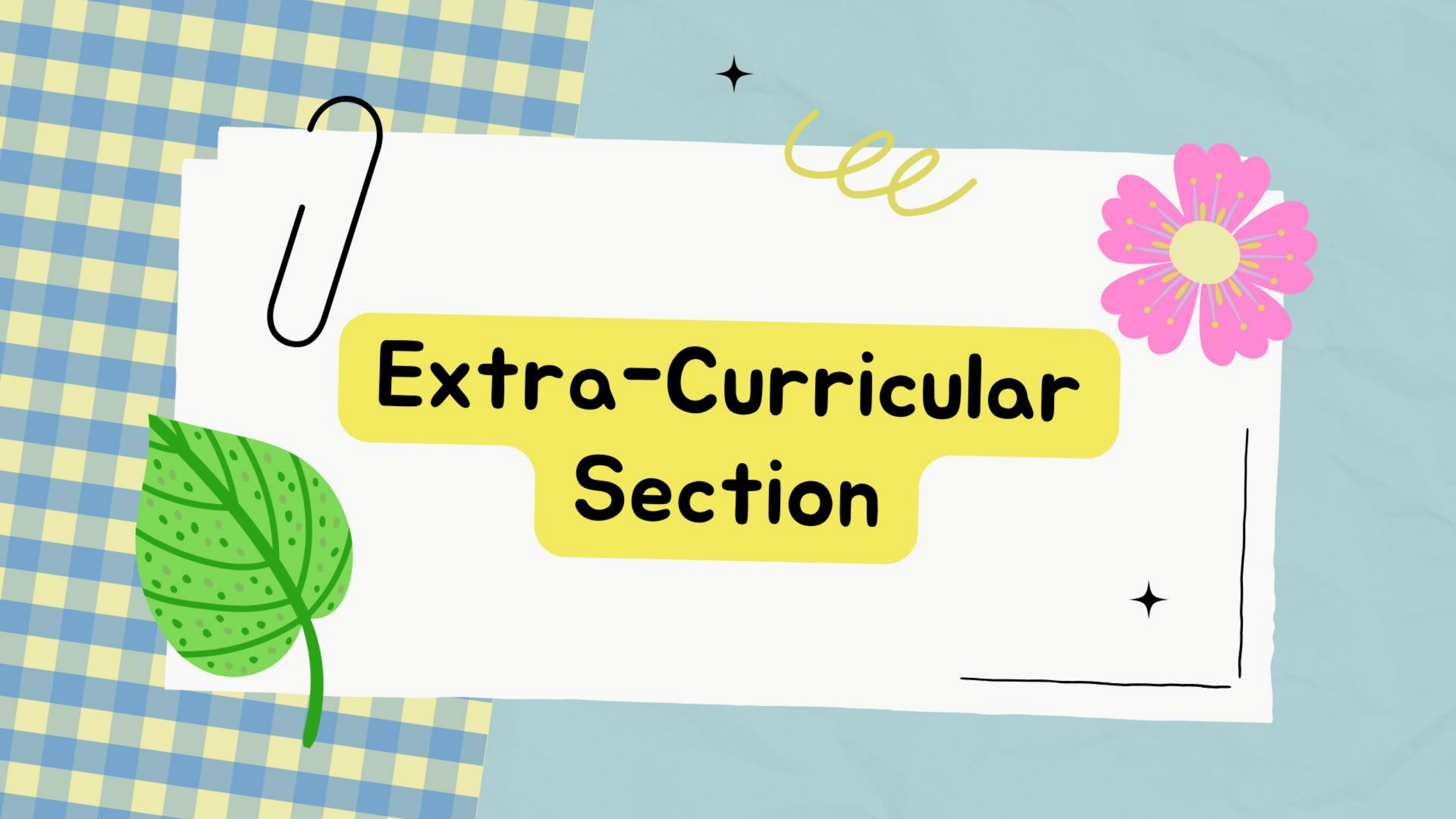


Yes - Black leather style school shoes

Footwear:

No - Sports trainers (air bubbles or canvas)





# Extra-Curricular Section





# LEGALLY BLONDE

*The Musical™*



*Legally Blonde Rehearsals*

*Monday 8th September – Principal Cast only (including  
principal dancers)*

*Thursday 11th September – Full Cast rehearsal*

*Both sessions: 3:10 – 4:10*

*Year 7 students are invited on Thursday 11th September to  
join in a workshop audition.*







# **Dance Company Rehearsals**

**Every Wednesday after  
school in the Main Hall**

**3:10-4:10PM**



# CHOIR!

Wednesdays  
3:10-4:10pm





# **KS3 Dance Club**

**Tuesdays  
3:10-4:10pm**







# ART CLUB

EVERY TUESDAY  
AFTERSCHOOL IN AR1  
3:10PM - 4:10PM  
YEARS 7-9

# After School/Lunch Extra Curricular Activities

Our full extra curricular  
timetable will be in next  
weeks bulletin!



**3:10pm-4:10pm**

**2024/2025**