

Charlton School Safeguarding Newsletter



Keeping our children safe across school, online and in our community.



Edition 1

Autumn 2

Are you worried about a child?

Charlton School is committed to keeping children safe. We have robust policies and procedures to help our young students thrive whilst working in the 21st Century.

We have trained staff who work with the Local Authority and specialist support services/agencies to keep our students safe in and outside the school.

If you are worried about the safety of one of our students, please contact one of our designated staff below on 386800. If it is outside of school hours, please contact one of the agencies listed below. The important thing is to remember you are not on your own and don't wait. Together we make a difference.

Welcome to the first edition of Charlton's Safeguarding newsletter.

The purpose of this newsletter is to share safeguarding information with our community.

Look out for a purple lanyard

THESE ARE CHARLTON'S MAIN DSL'S:

If you see a member of staff wearing a purple lanyard, this means they are a designated safeguarding lead.

They have had specific training for dealing with any safeguarding matters that you may have.

If you have any worries or concerns do not hesitate to go to them to report any safeguarding concerns or for help and advice.



Mrs A Bithell
Headteacher
Tel: 386800



Mrs A Vickers
Vice Principal
Tel: 386800



Mr P Wakelin
Assistant Vice Principal
Tel: 386800

Charlton School recognises our moral and statutory responsibility to safeguard and promote the welfare of all pupils. We will endeavour to provide a safe and welcoming environment where children are respected and valued. We will be alert to the signs of abuse and maltreatment and will follow our procedures to ensure that children receive effective support, protection, and justice. The procedures contained in the Child Protection and Safeguarding policy apply to all staff and governors and are consistent with those of the local Safeguarding Children Board.

SUPPORTIVE
Work For The Family



Core principles

The policy is one of a series in the school's integrated safeguarding portfolio. Our core safeguarding principles are as follows:

- The school's responsibility to promote the welfare, safety and happiness of children is of paramount importance.
- Safer children make more successful learners.
- Representatives of the whole school's community of pupils, parents, staff and governors will be involved in policy development and review.
- Policies will be reviewed annually, unless an incident or new legislation or guidance suggest the need for an interim review.



Mrs Bithell
SLT Safeguarding Lead



Mrs A Vickers
CSE Lead



Mr P Wakelin
Early Help Lead



Mrs Cunningham



Mrs Kinsey
Early Help Lead



Mr S Delves



Miss K Littleford
DSL and Online Safety
Lead



Mrs A Wills



Charlton School Safeguarding Newsletter



Keeping our children safe across school, online and in our community.



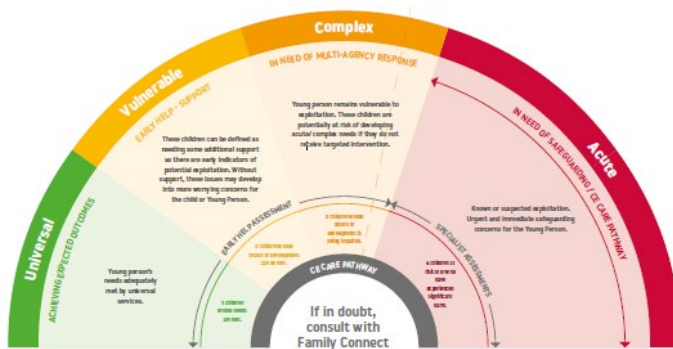
Edition 1

Autumn 1

Contextual safeguarding:

Our CSE Lead is Mrs Anna Vickers. Charlton school uses a wide variety of services to educate students about avoiding all aspects of exploitation. We have comprehensive resources within our PHSE and RSE and Personal development programmes and delivered through assemblies from several organisations. Contact Family Connect on 01952385385 or Police on 101.

Child Exploitation Pathway

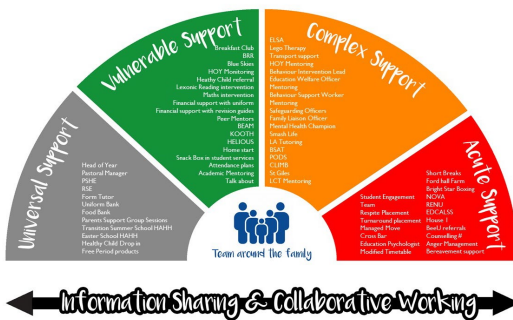


E-Safety

Our lead for E-Safety is Miss K Littleford. We have plenty of E-Safety information available anytime [here](#) on our website as well as on our social media. Students are also free to speak to Miss Littleford about any online safety concerns they may have.



This is our comprehensive **Early Intervention and well-being offer:**



Key Pastoral staff meet weekly to discuss students that been referred to our Early Intervention and Well-being Panel. We discuss cases and consider the needs of the whole child. This could be SEND, Behaviour, Mental Health and well-being and/or safeguarding needs. We have established a robust system that utilises our internal and external services whilst tracking the students' progress and well-being.

Attendance is a part of our safeguarding provision – we always encourage a high level of attendance to both school and lessons.

The Good Attendance Guide

The minimum percentage we expect is 95% attendance. This means missing no more than 5 days in a year.

0 days off school	100%	Perfection
Requires no 2 days off school each year	99%	Excellent
Requires no 3 days off school each year	97%	Good
Requires no 4 days off school each year	95%	Slight Concern
Requires no 5 days off school each year	90%	Concern
Requires no 6 days off school each year	85%	Very Concerned

Good attendance is a sign of a high-quality response to ensure the young people have the support, the ability, the capacity to engage in education.

Good attendance is important in order for our students to:

- Achieve their potential
- Engage themselves as an important part of the school community and to value and respect school life.
- Develop a positive attitude towards school and attendance.

Working Together:

The Pastoral, SEND, Behaviour, Mental Health and well-being and Safeguarding teams work hard to get the best outcomes for our families.



For more information, visit our safeguarding page on our website

[Safeguarding Information](#)